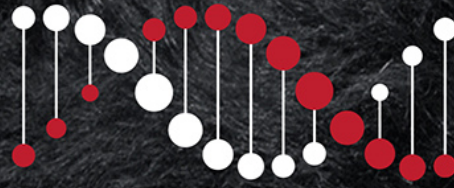


TACE



TransTasman Angus Cattle Evaluation

MSA Marbling

RESEARCH BREEDING VALUES

AUGUST 2023

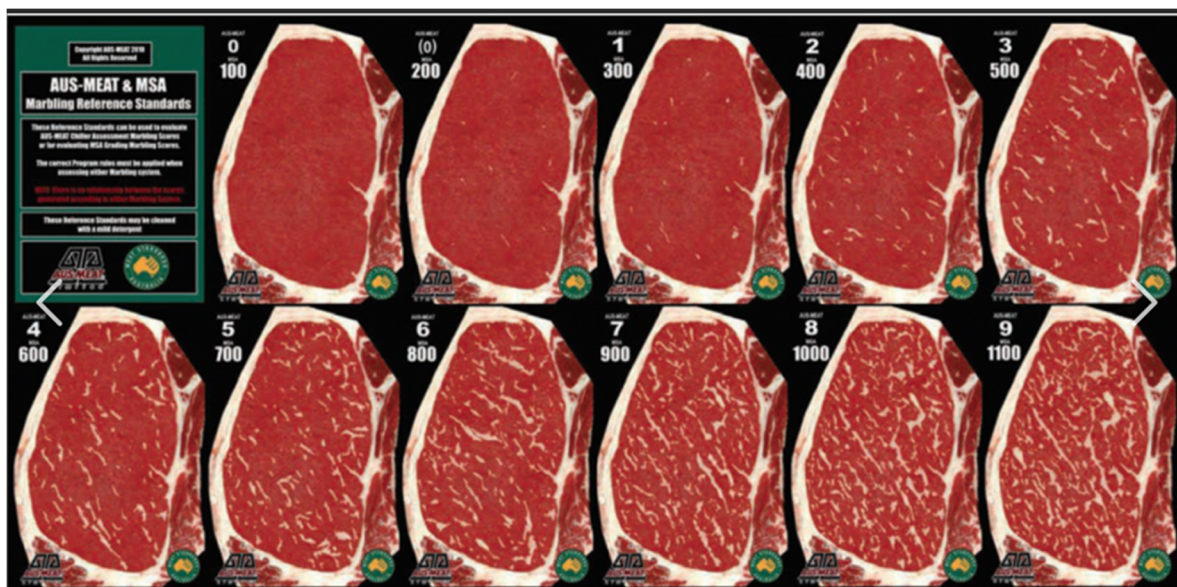
BACKGROUND

Angus Australia has partnered with the Animal Genetics and Breeding Unit (AGBU) and the Agricultural Business Research Institute (ABRI) to undertake research into the genetics Meat Standards Australia (MSA) Marbling Score in Australian Angus Cattle.

MSA Marbling Score, being the subjective visual assessment of intramuscular fat at the chilled carcass grading site, has been identified as a trait of importance, particularly as it is related to Angus carcass value and consumer eating experience. It is also the commercially recognised method for describing marbling in the national grading system, MSA.

As a result of this collaborative research, MSA Marbling Score RBVs are now routinely analyzed every two weeks in the TransTasman Angus Cattle Evaluation (TACE). To underpin this analysis, MSA marbling scores are utilised from both member collected data and from progeny in the Angus Sire Benchmarking Program. Angus animals, mostly steers, that are MSA graded between 300 and 1000 days of age at slaughter are included in the analysis.

MSA Marbling scores are collected using the industry standard 100 – 1100 scoring system (with increments of 10 score unit). A score of 100 indicates no/minimal marbling and a score of 1100 indicates abundant marbling. Along with the amount of marbling, the scores also take into account distribution and size of fleck (i.e. coarse or fine marbling).



Study of the Angus Australia data by AGBU has demonstrated that a significant portion of the differences in the MSA marbling score of individual animals can be attributed to genetics, having a high **heritability of 0.54**. The study also estimated the genetic correlation between MSA marbling score and a wide range of production traits included in the multi-trait analysis model utilized in TACE (from the BREEDPLAN program). As expected, the genetic correlations with carcass IMF, bull ultrasound scan IMF and heifer ultrasound scan IMF had the strongest relationship of 0.80, 0.35 and 0.35 respectively.

From this collaborative research it is now possible to generate breeding values for MSA Marbling Score and select animals for use within Angus breeding programs with desirable genetics for this trait. This is underpinned by a large and growing reference population of MSA Marbling Scores ($n > 10,000$ as of May 2023), coupled with genomic and pedigree data.

UNDERSTANDING THE RESEARCH BREEDING VALUES

MSA Marbling Research Breeding Values (RBVs) are provided in this publication for sires with (i) at least 50% accuracy for their MSA Marbling RBV, and (ii) one or more progeny born in the last two years.

MSA Marbling Score (MMS) RBVs are estimates of genetic differences between animals in MSA marbling score at the 12/13th rib grading site in a 400 kg steer carcass.

MMS RBVs are calculated from MSA marbling scores (taken by a trained/accredited carcass grader), pedigree, genomics and correlated traits (e.g. Carcass IMF, bull and heifer ultrasound scan IMF). MMS EBVs are expressed in MSA marbling score units.

Higher, more positive MMS RBVs indicate the animal is expected to produce progeny with higher marbling scores in a 400 kg steer carcass.

USING THE RESEARCH BREEDING VALUES IN SELECTION

The Research Breeding Values in this publication enable Angus breeders to select animals with desirable genetics for MSA marbling score, balanced with selection for other traits of importance within their breeding objective.

It is important to note that the Research Breeding Values are subject to greater potential change than EBVs routinely reported as part of the TransTasman Angus Cattle Evaluation (TACE) and should be used with caution in animal selection decisions.

Research Breeding Values may change as improvements are made to the analytical models that are used, and as additional performance information is collected.

ACKNOWLEDGEMENTS

Angus Australia gratefully acknowledges the contributions of Animal Genetics and Breeding Unit (AGBU) and the Agricultural Business Research Institute (ABRI), and in particular, Dr Gilbert Jeyaruban, Dr Steve Miller, Dr Natalie Connors, Dr Andrew Swan, Dr David Johnston and Dr Brad Crook, in the calculation of the Research Breeding Values that are included in this publication.

Angus Australia also acknowledges Meat and Livestock Australia (MLA) for the related R&D funding supplied to AGBU and Angus Australia for the ASBP. Also, for overseeing the MSA grading system, including the collection of MSA marbling scores in the ASBP, particularly through the grading by Janie Lau.

DISCLAIMER

The Research Breeding Values contained within this publication were calculated from data supplied to Angus Australia by members and/or third parties. Whilst every effort is made to ensure the accuracy of the data, Angus Australia, its officers and employees, assume no responsibility for the accuracy of the RBVs, nor the outcome (including consequential loss) of an action taken based on the information presented in this publication.

Angus Australia - MSA Marbling Research Breeding Values

Date: July 31, 2023

Page: 1

Ident	Name																										
Sire Dam	Reg.	MSA MBL RBV	Calv-Ease		Birth		Growth			Maternal			Fert		Carcase					Feed		Temp		Structural		Selection Index	
			Dir	Dtrs	GL	BW	200	400	600	MCW	Milk	SS	DC	CW	EMA	Rib	P8	RBY	IMF	NFI-F	Doc	Claw	Angle	Leg	\$A	\$A-L	
NXOL172 NXOF43 NXOJ432	AJC L172 ^{SV} APR	+54 89% 61	+6.4 73% 20	+7.6 55% 8	-7.9 93% 10	+3.1 95% 29	+61 94% 9	+107 93% 10	+150 93% 4	+137 85% 7	+14 84% 78	+2.0 79% 52	-4.3 52% 61	+78 90% 18	+5.9 87% 53	-0.5 82% 60	-0.3 88% 50	+0.2 80% 66	+1.3 89% 72	-0.98 81% 1	+27 82% 20	+1.40 85% 99	+1.28 85% 96	+1.26 81% 97	\$218 31	\$406 10	
NXOL99 USA16073564 NXOJ112	AJC L99 ^{PV} APR	+83 91% 36	+6.5 81% 19	-0.2 68% 79	-5.3 96% 41	+5.4 97% 78	+63 96% 7	+113 96% 5	+147 96% 6	+122 90% 17	+23 91% 12	+3.3 90% 12	-7.4 55% 3	+101 92% 1	+9.2 90% 18	-1.4 89% 79	+1.0 90% 26	+0.6 79% 40	+2.2 91% 46	-0.56 84% 1	+11 88% 88	+1.24 91% 98	+1.10 91% 78	+0.96 87% 26	\$278 1	\$463 1	
ARRR11 CAN2043806 QMUN24	ALKIRA RENEGADE R11 ^{PV} HBR	+58 59% 57	+7.9 56% 11	+8.1 43% 6	-5.0 71% 46	+2.3 71% 16	+49 73% 54	+101 70% 21	+130 71% 24	+115 68% 26	+22 61% 14	+2.3 67% 40	-5.9 33% 19	+68 61% 43	+10.0 60% 13	+0.9 61% 28	-0.1 61% 46	+0.6 54% 40	+2.0 64% 52	-0.01 48% 26	+30 42% 14	+0.76 66% 31	+0.70 66% 4	+0.92 57% 16	\$228 20	\$411 8	
DGJG10 VTMB1 DGJZ15	ALLOURA GET CRACKING G10 ^{SV} HBR	+185 92% 2	+10.1 93% 3	+9.0 81% 3	-3.4 99% 71	+2.5 98% 19	+43 98% 80	+74 98% 89	+86 98% 95	+79 97% 82	+13 97% 83	-0.3 97% 99	-8.5 74% 1	+47 95% 93	+16.0 93% 1	+1.6 94% 16	-0.2 94% 48	+1.1 89% 14	+5.5 92% 2	+0.54 87% 88	-3 96% 99	+0.52 96% 4	+1.02 96% 62	+0.94 93% 20	\$281 1	\$439 2	
DGJL94 USA15832750 DGJH24	ALLOURA LOCK STOCK & HBR	+72 84% 45	+6.7 74% 18	+4.3 60% 36	-4.8 93% 49	+2.8 95% 23	+53 93% 34	+87 93% 61	+113 93% 58	+109 88% 35	+12 80% 85	+0.8 86% 90	-4.9 50% 43	+60 86% 68	+0.5 81% 97	+1.3 77% 21	-1.6 82% 73	+0.3 74% 59	+2.3 84% 43	-0.37 73% 4	+20 86% 48	+0.94 84% 69	+0.88 82% 28	+0.96 76% 26	\$194 57	\$351 46	
DGJQ30 WWEL3 DGJK117	ALLOURA QUINELLA Q30 ^{SV} HBR	+157 68% 4	+4.2 72% 38	+3.8 60% 41	-0.6 94% 96	+2.5 91% 19	+54 88% 33	+97 81% 31	+115 82% 55	+114 78% 27	+15 71% 65	+3.6 77% 8	-8.0 50% 1	+69 74% 42	+13.3 67% 3	+0.6 69% 34	+0.5 70% 35	+0.9 64% 23	+4.5 71% 6	+0.25 63% 59	+14 83% 77	+1.04 70% 85	+1.10 70% 78	+1.14 69% 81	\$275 1	\$455 1	
WJMF96 WJMB59 WJMD25	ARDCAIRNIE F96 ^{SV} HBR	+24 88% 85	+5.7 88% 25	+3.7 76% 43	-5.0 98% 46	+2.9 98% 25	+49 97% 55	+89 97% 54	+121 97% 40	+91 95% 65	+15 95% 68	+1.8 96% 60	-4.2 63% 64	+68 92% 44	+7.4 90% 35	-1.4 91% 79	-0.9 91% 61	+1.2 86% 11	+0.6 91% 88	-0.31 79% 6	+9 88% 93	+0.48 87% 2	+0.82 87% 17	+0.92 82% 16	\$205 45	\$347 48	
WJMJ27 USA15354674 WJMG96	ARDCAIRNIE J27 ^{SV} HBR	+15 91% 90	+8.1 80% 10	+9.8 68% 2	-8.7 96% 6	+2.7 96% 22	+57 95% 21	+100 96% 24	+138 96% 13	+129 92% 11	+9 90% 96	+0.4 92% 95	-4.7 63% 49	+97 92% 2	+2.2 91% 91	+2.2 90% 10	+1.2 91% 23	-0.1 87% 81	+1.0 92% 80	+0.29 85% 64	+2 83% 99	+0.90 87% 61	+1.06 87% 71	+1.18 82% 88	\$206 44	\$391 16	
WJMM117 WJMF96 WJMG78	ARDCAIRNIE M117 ^{SV} HBR	+18 80% 88	+6.1 72% 22	+3.6 59% 44	-6.3 92% 26	+3.7 95% 41	+58 94% 17	+102 93% 20	+134 93% 18	+128 86% 12	+1 81% 99	+2.8 89% 29	-5.1 54% 38	+79 84% 17	+11.4 83% 7	-0.7 83% 65	-2.0 83% 78	+1.7 76% 3	+0.3 84% 92	-0.14 72% 14	+20 75% 48	+0.88 81% 57	+1.00 81% 57	+0.90 76% 12	\$229 20	\$409 9	
NAQA241 USA2928 NAQW38	ARDROSSAN EQUATOR A241 ^{PV} HBR	+23 98% 86	-0.9 99% 77	+2.3 97% 57	-4.9 99% 47	+4.1 99% 51	+50 99% 52	+91 99% 48	+121 99% 40	+108 99% 36	+20 99% 24	+3.1 99% 16	-8.1 95% 1	+85 98% 8	+8.7 98% 22	-1.6 98% 83	-0.5 98% 53	+1.3 98% 9	+1.4 98% 70	+0.51 96% 86	+25 99% 26	+0.46 99% 2	+0.84 99% 20	+1.00 99% 38	\$226 23	\$381 22	
NAQN329 NAQH318 NAQK30	ARDROSSAN HOLBROOK N329 HBR	+78 87% 40	-1.3 70% 79	-2.5 57% 90	-3.3 96% 73	+3.2 94% 31	+51 94% 46	+95 94% 36	+120 92% 44	+89 86% 68	+22 79% 15	+3.0 79% 18	-6.5 50% 10	+74 88% 26	+6.3 87% 48	+1.9 86% 13	+2.1 87% 13	-1.0 78% 99	+4.6 89% 5	+1.03 79% 99	+9 86% 94	+0.78 81% 36	+1.00 87% 57	+1.00 83% 38	\$220 28	\$357 41	
NAQH255 NORE11 NAQD17	ARDROSSAN HONOUR H255 ^{PV} HBR	+49 94% 65	-0.5 95% 75	-0.9 86% 83	-3.1 99% 76	+4.6 99% 62	+43 98% 79	+73 98% 90	+97 98% 86	+93 98% 63	+13 98% 80	+2.1 98% 48	-7.0 83% 6	+60 96% 68	+5.9 95% 53	+1.2 96% 22	-0.9 96% 61	+0.5 94% 47	+2.4 96% 41	+0.94 91% 99	+6 97% 97	+0.44 97% 2	+1.02 97% 62	+1.24 95% 95	\$177 74	\$307 76	
NAQQ67 NMMN334 NAQL96	ARDROSSAN NECTAR Q67 ^{PV} HBR	+82 63% 37	+5.4 68% 28	+3.5 53% 45	-11.6 92% 1	+3.7 94% 41	+57 89% 20	+102 81% 19	+135 82% 17	+114 77% 27	+16 66% 62	+2.7 76% 26	-5.5 42% 28	+63 71% 60	+7.9 63% 29	+0.2 66% 43	-0.3 66% 50	+0.1 59% 71	+3.2 67% 22	-0.08 56% 19	+34 81% 7	+0.36 64% 1	+0.82 71% 17	+1.12 68% 76	\$239 12	\$409 8	
Breed Average EBVs		+68.	+2.2	+2.6	-4.8	+4.0	+50	+90	+117	+100	+17	+2.1	-4.7	+66	+6.3	+0.0	-0.3	+0.5	+2.2	+0.19	+20	+0.84	+0.97	+1.03	+197	+340	

Angus Australia - MSA Marbling Research Breeding Values

Date: July 31, 2023

Page: 2

Ident	Name																										
Sire Dam	Reg.	MSA MBL RBV	Calv-Ease		Birth		Growth			Maternal			Fert			Carcase				Feed	Temp	Structural		Selection Index			
			Dir	Dtrs	GL	BW	200	400	600	MCW	Milk	SS	DC	CW	EMA	Rib	P8	RBY	IMF	NFI-F	Doc	Claw	Angle	Leg	\$A	\$A-L	
QQFH147 VTME343 NMMF123	ASCOT HALLMARK H147 PV HBR	+88 93% 32	-5.6	+3.5	-5.2	+7.4	+59	+108	+152	+131	+15	+3.6	-5.7	+84	-2.4	+0.8	+0.7	-0.8	+2.6	+0.52	+13	+0.44	+0.82	+1.02	\$187	\$344	
HIOE7 VTMB219 BVVB32	AYRVALE BARTEL E7 PV HBR	+131 97% 10	+10.1	+10.7	-5.1	+1.7	+49	+86	+111	+70	+26	+2.4	-8.1	+67	+8.1	-0.4	+1.0	+1.1	+3.6	+0.43	+2	+1.02	+1.00	+1.12	\$290	\$447	
HIOG11 SEWD138 HIOE2	AYRVALE GENETIC G11 PV HBR	+51 90% 63	-4.5	-16.0	-5.7	+5.1	+66	+118	+163	+144	+19	+1.8	-5.5	+83	-0.3	-3.3	-2.2	-0.4	+2.3	-0.24	+36	+1.08	+1.08	+1.12	\$189	\$341	
NBBN47 HIOG18 NBBL83	BALD BLAIR NELSON N47 PV HBR	-4 85% 96	+5.1	-0.5	-5.6	+4.5	+57	+107	+158	+155	+20	+1.2	-4.0	+89	+4.9	-1.1	-1.4	+0.8	+0.6	-0.29	+29	+1.04	+1.12	+1.14	\$186	\$370	
ECMM114 VTMB1 BBAZ107	BANNABY BERKLEY M114 SV HBR	+74 83% 43	+4.2	+5.4	-10.7	+4.3	+61	+100	+146	+170	+5	+4.6	-8.9	+72	+3.0	-0.5	-3.5	+0.3	+2.0	-0.16	+22	+0.82	+0.74	+1.14	\$205	\$422	
ECMK63 NZE14647008839 ECMH45	BANNABY REALITY K63 PV HBR	+9 89% 92	+5.2	+2.3	-3.3	+3.8	+46	+79	+103	+109	+12	+2.0	-2.0	+52	+5.9	-0.5	-1.3	+0.6	+1.1	-0.15	+39	+0.60	+1.04	+1.18	\$138	\$277	
ECMN187 NZE14647008839 ECMF113	BANNABY REALITY N187 SV HBR	+116 86% 16	+8.7	+6.5	-7.2	+3.7	+48	+76	+91	+82	+11	+4.0	-7.4	+55	+8.1	+2.4	+3.1	+0.1	+3.4	+0.43	+6	+0.84	+1.16	+1.42	\$237	\$392	
VONG272 VOND412 VONC368	BANQUET GARRETT G272 SV HBR	+111 85% 18	-0.7	+5.5	-1.8	+6.4	+53	+98	+144	+147	+19	+4.7	-0.9	+56	+1.8	-2.6	-3.9	+0.3	+2.2	-0.79	+31	+0.54	+1.04	+1.10	\$123	\$282	
VONN462 VONJ507 VONK224	BANQUET NUTTELLA N462 PV HBR	+11 67% 92	-4.9	+1.6	-5.7	+6.5	+56	+106	+133	+102	+24	+3.5	-4.5	+75	+3.2	+0.7	+0.5	-0.3	+1.5	+0.00	+57	+0.60	+0.88	+0.98	\$185	\$318	
NBNN239 USA16956101 NBNH215	BEN NEVIS NEWSFLASH N239 PV HBR	+14 74% 90	-1.3	+4.9	-5.4	+4.6	+57	+99	+130	+118	+22	+0.9	-3.4	+82	+6.7	-1.4	-1.3	+0.7	+1.2	+0.02	+11	+1.02	+1.04	+0.98	\$191	\$337	
NBNP122 USA17960722 NBNM115	BEN NEVIS PRIME P122 PV HBR	+133 70% 9	+5.7	+5.7	-1.7	+2.6	+60	+92	+120	+83	+14	+3.3	-5.6	+67	+6.7	+1.1	+1.5	-0.4	+4.2	+0.43	+23	+0.68	+0.78	+0.98	\$261	\$410	
NBNR138 USA17960722 NBNP153	BEN NEVIS RONAN R138 PV HBR	+9 65% 92	+5.8	+6.6	-8.7	+4.0	+75	+127	+157	+151	+13	+2.4	-3.8	+86	+6.8	-2.6	-3.8	+0.6	+1.0	-0.25	+27	+0.70	+0.86	+0.94	\$243	\$444	
NGXQ227 VLYM518 NGXN221	BONGONGO BE QUICK Q227 PV HBR	+185 68% 1	+1.1	-1.3	-5.0	+4.0	+57	+103	+125	+73	+23	+3.9	-5.5	+71	+14.4	+1.6	+3.6	-0.1	+6.0	+0.72	+8	+0.56	+0.94	+1.06	\$293	\$430	
Breed Average EBVs		+68.	+2.2	+2.6	-4.8	+4.0	+50	+90	+117	+100	+17	+2.1	-4.7	+66	+6.3	+0.0	-0.3	+0.5	+2.2	+0.19	+20	+0.84	+0.97	+1.03	+197	+340	

Angus Australia - MSA Marbling Research Breeding Values

Date: July 31, 2023

Page: 3

Ident	Name																										
Sire Dam	Reg.	MSA MBL RBV	Calv-Ease		Birth		Growth			Maternal			Fert			Carcase					Feed	Temp	Structural		Selection Index		
			Dir	Dtrs	GL	BW	200	400	600	MCW	Milk	SS	DC	CW	EMA	Rib	P8	RBY	IMF	NFI-F	Doc	Claw	Angle	Leg	\$A	\$A-L	
NGXP212 NORL508 NGXL13	BONGONGO P212 ^{SV} HBR	+134 72% 9	+6.6 74% 18	+8.9 61% 3	-7.0 95% 17	+2.9 96% 25	+51 93% 47	+93 92% 43	+118 90% 48	+101 84% 48	+23 76% 10	+3.7 83% 7	-7.5 52% 3	+59 78% 70	+3.3 79% 83	+2.9 79% 5	+2.3 79% 11	-0.8 74% 97	+4.3 78% 8	+0.72 63% 96	+7 82% 96	+0.90 69% 61	+0.94 69% 42	+1.02 68% 45	\$238 13	\$411 8	
NGXP421 USA18229425 NGXM413	BONGONGO P421 ^{SV} APR	+104 67% 22	+9.5 70% 4	+6.1 55% 19	-6.7 92% 21	+1.9 91% 12	+57 87% 18	+97 85% 32	+121 82% 42	+80 79% 81	+23 68% 9	+2.9 80% 21	-6.3 46% 13	+66 73% 49	+10.5 70% 11	+1.7 73% 15	+0.9 72% 28	+0.3 67% 59	+3.2 72% 22	+0.84 57% 98	+20 77% 49	+1.10 70% 91	+1.02 70% 62	+1.12 65% 76	\$275 1	\$432 3	
NUIF32 NGMC196 NUID96	BONNY BROOKE FALCO F32 ^{SV} HBR	+43 80% 70	-6.7 63% 95	-5.0 48% 96	+0.1 90% 98	+6.4 88% 91	+51 89% 44	+80 88% 79	+111 89% 64	+100 81% 50	+19 71% 35	-0.1 67% 99	-3.5 50% 80	+65 83% 54	-1.8 80% 99	+4.1 81% 2	+4.1 82% 3	-1.3 72% 99	+2.1 79% 49	-0.44 70% 2	+6 77% 96	+1.04 79% 85	+0.92 79% 37	+1.10 74% 71	\$130 95	\$233 96	
HCAG013 VTMA217 VTMZ618	BOONAROO GRAVITY G013 ^{PV} HBR	+109 89% 19	+5.9 88% 24	+1.8 79% 62	-5.8 98% 33	+3.4 98% 35	+50 97% 51	+88 97% 57	+115 94% 54	+106 94% 40	+25 94% 5	+3.8 96% 6	-6.7 70% 8	+56 92% 78	+4.7 91% 69	-2.9 91% 96	-2.9 91% 89	+1.2 87% 11	+2.8 90% 31	-0.50 83% 2	+11 93% 89	+0.46 93% 2	+0.92 94% 37	+1.10 91% 71	\$218 30	\$377 25	
HCAN20 VTMK338 HCAL54	BOONAROO KASBAH N20 ^{SV} HBR	+43 87% 71	+6.4 70% 20	+4.4 53% 35	-6.3 93% 26	+4.8 95% 66	+46 91% 67	+85 91% 66	+110 87% 65	+97 82% 55	+19 71% 30	+3.0 82% 18	-5.2 44% 35	+58 87% 74	+5.6 86% 57	+0.4 87% 38	-0.8 87% 59	+0.7 77% 33	+1.5 89% 69	+0.63 80% 92	+7 86% 96	+0.92 89% 65	+0.94 88% 42	+1.02 82% 45	\$191 61	\$341 54	
NGME124 NAQA241 NGMB325	BOOROOMOOKA INSPIRED E124 HBR	+45 94% 69	-5.8 96% 94	+1.1 90% 68	-6.6 99% 22	+3.7 99% 41	+46 98% 70	+82 98% 74	+107 98% 71	+98 98% 53	+14 98% 73	+0.9 98% 88	-8.0 82% 1	+78 96% 18	+3.5 95% 82	-0.3 96% 55	+3.3 96% 6	-0.4 94% 91	+2.4 95% 41	+0.71 89% 95	+24 98% 30	+0.80 97% 40	+0.84 97% 20	+0.78 96% 2	\$189 63	\$320 69	
NGMN418 WWEL3 NGML471	BOOROOMOOKA JACKPOT N418 HBR	+55 82% 60	+2.8 75% 51	+4.7 61% 32	-8.9 94% 5	+5.8 96% 84	+62 95% 8	+111 95% 7	+141 94% 10	+128 91% 12	+11 81% 90	+3.3 92% 12	-7.2 53% 4	+86 86% 7	+11.0 84% 8	+0.7 84% 32	+2.0 85% 14	+0.8 78% 28	+1.9 86% 55	+0.17 76% 48	+25 95% 28	+1.30 91% 99	+1.08 91% 75	+1.00 85% 38	\$274 1	\$462 1	
NGMK9 BNAD145 NGMA281	BOOROOMOOKA KINGY K9 ^{PV} HBR	+126 89% 11	-5.8 88% 94	-8.7 79% 99	-2.2 97% 86	+6.5 98% 92	+49 97% 53	+85 97% 65	+120 97% 43	+110 96% 33	+19 95% 33	+3.1 95% 16	-7.2 69% 4	+67 92% 48	+8.7 90% 22	+0.9 91% 28	-0.4 91% 51	+0.4 88% 53	+4.5 91% 6	+0.51 82% 86	+12 97% 86	+0.70 95% 21	+0.92 95% 37	+0.86 90% 7	\$204 47	\$334 59	
NGMN213 NGML201 NGML45	BOOROOMOOKA NORMANDY HBR	+118 84% 14	+11.8 70% 1	+8.9 53% 3	-8.3 93% 8	+1.0 96% 5	+40 94% 89	+73 94% 90	+100 94% 82	+77 91% 84	+28 79% 2	+3.2 91% 3	-7.4 47% 3	+49 86% 90	+2.5 85% 85	-2.3 85% 85	-2.5 85% 85	+0.2 76% 66	+3.6 87% 15	+0.90 74% 99	+38 94% 3	+0.82 91% 44	+0.68 92% 3	+1.04 84% 52	\$201 50	\$347 49	
NGMP96 WWEL3 NGMM566	BOOROOMOOKA PARAGON P96 HBR	+71 75% 45	+0.6 80% 68	+3.3 64% 47	-7.7 97% 11	+3.8 98% 44	+64 97% 5	+129 97% 1	+167 96% 1	+129 88% 12	+30 75% 1	+3.7 95% 7	-8.3 55% 1	+114 81% 1	+12.0 81% 5	-1.6 81% 83	-0.2 81% 48	+1.0 76% 18	+2.9 80% 28	+0.48 66% 83	+39 97% 3	+0.94 93% 69	+1.06 92% 71	+1.12 90% 76	\$310 1	\$505 1	
NGMP22 NGMK9 NGMK640	BOOROOMOOKA PRESIDENT HBR	+68 69% 48	-0.4 71% 74	+0.6 56% 73	-7.0 96% 17	+4.8 95% 66	+57 93% 21	+97 92% 31	+129 93% 25	+113 84% 29	+20 71% 27	+2.5 85% 33	-7.0 48% 6	+71 77% 34	+7.3 72% 36	+0.9 75% 28	+0.5 75% 35	+0.3 69% 59	+2.8 74% 31	+0.26 60% 60	+19 92% 53	+0.46 76% 2	+0.64 77% 2	+0.74 73% 1	\$234 16	\$391 16	
NGMQ5 NORL519 NGMK720	BOOROOMOOKA QUALITY Q5 ^{SV} HBR	+152 66% 5	+5.6 71% 26	+6.1 59% 19	-7.5 90% 13	+3.3 88% 33	+56 85% 25	+106 80% 12	+144 80% 8	+140 77% 6	+19 70% 32	+2.3 76% 40	-5.7 50% 23	+82 72% 11	-2.1 66% 99	+1.8 68% 14	+2.6 68% 9	-1.8 63% 99	+5.3 69% 3	+0.39 59% 76	+22 81% 37	+0.74 74% 27	+0.90 74% 32	+1.02 71% 45	\$212 37	\$405 10	
NGMR49 USA17960722 NGMP361	BOOROOMOOKA RAUDONIKIS HBR	+42 64% 71	+3.3 68% 46	+5.0 56% 29	-4.8 84% 49	+5.0 85% 71	+64 81% 5	+109 77% 8	+136 79% 15	+113 75% 28	+20 68% 27	+3.4 75% 11	-4.2 45% 64	+73 69% 31	+11.1 64% 8	-0.8 66% 67	-2.6 67% 86	+1.1 61% 14	+1.3 68% 72	+0.13 57% 43	+18 76% 59	+0.88 76% 57	+0.86 76% 24	+0.92 72% 16	\$241 11	\$404 10	
Breed Average EBVs		+68.	+2.2	+2.6	-4.8	+4.0	+50	+90	+117	+100	+17	+2.1	-4.7	+66	+6.3	+0.0	-0.3	+0.5	+2.2	+0.19	+20	+0.84	+0.97	+1.03	+197	+340	

Angus Australia - MSA Marbling Research Breeding Values

Date: July 31, 2023

Page: 4

Ident	Name																										
Sire Dam	Reg.	MSA MBL RBV	Calv-Ease		Birth		Growth			Maternal			Fert			Carcase					Feed	Temp	Structural		Selection Index		
			Dir	Dtrs	GL	BW	200	400	600	MCW	Milk	SS	DC	CW	EMA	Rib	P8	RBY	IMF	NFI-F	Doc	Claw	Angle	Leg	\$A	\$A-L	
BOWK2 VTME343 NAQZ31	BOWMAN AUSTRALIA K2 ^{PV} HBR	+57 86% 58	+5.5	+2.8	-6.9	+3.8	+47	+94	+121	+98	+20	+4.5	-7.7	+68	+7.3	+0.4	-1.3	+0.9	+1.2	-0.49	+29	+0.84	+1.00	+0.90	\$219	\$382	
SRKK306 NJWG279 TFAD58	BOWMONT KING K306 ^{PV} HBR	+170 91% 3	-1.3	-10.0	-5.6	+4.7	+51	+82	+107	+89	-1	-0.2	-5.3	+69	+15.2	-0.5	-1.8	+1.7	+5.0	+0.57	+29	+0.54	+0.92	+0.74	\$252	\$370	
BONQ007 QMUM13 HIOL28	BRIDGEWATER QUANTUM Q007 HBR	+65 68% 51	-2.0	-0.9	-6.2	+5.5	+62	+98	+129	+96	+20	+0.0	-6.4	+81	+7.6	-0.2	-1.6	+0.3	+2.8	+0.08	+31	+1.00	+0.84	+1.04	\$246	\$380	
AMQH64 VTME343 AMQF27	BROOKLANA HI TOWER H64 ^{PV} HBR	+20 87% 87	-7.1	-2.6	+0.8	+5.7	+51	+100	+141	+131	+17	+1.6	-3.1	+81	+5.1	+1.7	+1.0	+0.5	+1.4	+0.64	+29	+0.64	+0.96	+1.06	\$156	\$292	
GTNM3 NORE11 GTNJ4	CHILTERN PARK MARBLES M3 HBR	+89 89% 31	+3.5	-4.4	-6.1	+2.6	+42	+76	+93	+56	+27	+3.2	-6.8	+55	+4.1	-0.1	-3.0	+0.2	+3.6	-0.12	+12	+0.50	+1.08	+1.16	\$197	\$306	
GTNM6 VTMF734 VSNF15	CHILTERN PARK MOE M6 ^{PV} HBR	+21 88% 86	+5.8	+2.7	-1.9	+3.0	+52	+101	+134	+81	+25	+1.6	-6.4	+80	+6.7	-0.2	+1.6	+0.1	+1.9	+0.21	+46	+0.74	+1.00	+1.02	\$253	\$403	
GTNP9 HKFJ5 GTNK26	CHILTERN PARK PICASSO P9 ^{PV} HBR	+126 82% 12	+9.5	+6.1	-3.4	+1.6	+57	+103	+134	+94	+22	+4.0	-7.5	+97	+8.4	-0.8	+1.0	-0.2	+4.5	+0.55	+32	+0.74	+0.66	+0.88	\$283	\$458	
GTNQ322 USA18636106 GTNL198	CHILTERN PARK QUADRANT HBR	+91 64% 30	+6.2	+3.6	-2.6	+3.5	+63	+119	+148	+109	+20	+4.2	-5.1	+92	+11.8	-0.6	-1.1	+0.4	+3.5	+0.66	+6	+1.24	+1.08	+0.98	\$279	\$457	
THCL61 WDCE11 THCF92	CLUDEN NEWRY ELEVATOR L61 HBR	-81 88% 99	-2.8	-0.7	-3.9	+6.4	+64	+126	+160	+169	+20	+1.5	-3.8	+104	+9.9	-3.6	-2.0	+1.4	-1.0	+0.15	+41	+0.64	+0.92	+0.94	\$190	\$377	
QMUM13 USA16295688 QMUG1	CLUNES CROSSING DUSTY M13 HBR	+51 91% 63	+1.0	+4.0	-7.8	+5.3	+66	+102	+121	+66	+13	+1.0	-7.5	+72	+13.0	-2.4	-3.9	+1.4	+1.9	+0.10	+10	+0.92	+0.86	+1.00	\$304	\$438	
NBHL348 NZE14647008839 AHWJ81	CLUNIE RANGE LEGEND L348 ^{PV} HBR	+79 90% 39	-5.7	+4.7	-8.2	+6.1	+58	+103	+126	+155	+1	+2.9	-7.0	+63	+0.6	+3.7	+1.2	-0.8	+2.5	+0.10	+26	+0.50	+0.80	+1.28	\$171	\$350	
NBHP392 USA17960722 NBHM516	CLUNIE RANGE PLANTATION HBR	+91 73% 30	+6.8	+4.6	-6.0	+4.2	+68	+118	+136	+102	+21	+5.3	-5.3	+67	+2.5	-0.7	-0.9	-0.8	+2.9	+0.06	+15	+0.76	+1.00	+0.92	\$249	\$422	
WDCH249 USA14885809 WDCE9	COONAMBLE HECTOR H249 ^{SV} HBR	+15 92% 90	+0.1	-2.2	-8.8	+4.4	+44	+79	+99	+85	+5	+1.2	-4.6	+46	+10.7	+3.4	+4.2	+0.9	+0.1	-0.51	+42	+0.42	+0.48	+0.80	\$187	\$310	
Breed Average EBVs		+68.	+2.2	+2.6	-4.8	+4.0	+50	+90	+117	+100	+17	+2.1	-4.7	+66	+6.3	+0.0	-0.3	+0.5	+2.2	+0.19	+20	+0.84	+0.97	+1.03	+197	+340	

Angus Australia - MSA Marbling Research Breeding Values

Date: July 31, 2023

Page: 5

Ident	Name																										
Sire Dam	Reg.	MSA MBL RBV	Calv-Ease		Birth		Growth			Maternal			Fert		Carcase					Feed	Temp	Structural		Selection Index			
			Dir	Dtrs	GL	BW	200	400	600	MCW	Milk	SS	DC	CW	EMA	Rib	P8	RBY	IMF	NFI-F	Doc	Claw	Angle	Leg	\$A	\$A-L	
WDCJ266 BNAD145 WHHA61	COONAMBLE JUNIOR J266 ^{PV} HBR	+58 89% 57	-8.7 89% 97	-6.7 77% 98	-0.5 98% 96	+5.6 98% 81	+59 97% 15	+104 97% 14	+143 97% 9	+130 95% 11	+18 95% 44	+2.2 96% 44	-5.3 70% 33	+102 93% 1	+10.7 91% 10	-4.8 91% 99	-4.9 91% 98	+1.6 88% 4	+2.4 91% 41	-0.35 83% 4	+8 94% 94	+0.92 94% 65	+0.78 94% 11	+1.08 91% 65	\$203 48	\$340 55	
WDCK314 NAQA241 WDCD94	COONAMBLE KEVIN K314 ^{PV} HBR	-13 88% 98	-1.6 83% 80	+3.0 71% 50	-2.4 95% 84	+5.0 97% 71	+54 96% 30	+103 95% 16	+134 96% 17	+110 91% 33	+24 91% 8	+4.3 92% 3	-6.2 65% 14	+89 90% 5	+6.6 89% 44	+0.3 89% 41	+1.0 89% 26	+0.1 85% 71	+1.5 90% 67	+0.32 80% 68	+25 81% 26	+0.48 85% 2	+1.10 85% 78	+1.20 82% 91	\$210 40	\$365 34	
USA19611994 USA18467508 USA18974126	DB ICONIC G95 ^{PV} HBR	+128 75% 11	+5.1 70% 30	+8.0 55% 7	-3.7 95% 67	+2.6 94% 20	+67 91% 3	+128 87% 1	+156 85% 2	+138 82% 6	+18 80% 41	+2.6 80% 29	-3.5 43% 80	+94 82% 3	+8.6 79% 23	+0.2 76% 43	-1.0 71% 62	-0.2 70% 85	+4.3 81% 8	-0.02 56% 25	+21 83% 43	+1.22 90% 97	+1.02 91% 62	+0.94 67% 20	\$262 3	\$459 1	
NJS21S15 USA18636106 QHEJ100	DEVANAH SATURN S15 ^{PV} HBR	+58 62% 57	+5.1 64% 30	+2.1 51% 59	-7.8 81% 11	+3.6 82% 39	+62 76% 7	+106 74% 12	+138 77% 13	+92 73% 63	+22 66% 13	+3.8 75% 6	-6.9 40% 6	+85 66% 8	+6.4 63% 47	-0.5 65% 60	-1.3 65% 68	+0.1 59% 71	+2.3 67% 43	+0.12 55% 42	+7 54% 95	+1.00 71% 79	+1.02 71% 62	+0.84 67% 5	\$261 3	\$420 5	
WKGQ202 WKGN129 WKGL21	DIAMOND ONE ALL IN Q202 ^{SV} HBR	-7 56% 97	-5.3 56% 93	-5.1 44% 96	-6.1 73% 28	+7.5 74% 97	+70 72% 1	+121 71% 2	+164 71% 1	+152 68% 3	+22 63% 12	+2.3 64% 40	-4.2 34% 64	+100 61% 1	+11.4 57% 7	-5.9 60% 99	-6.7 60% 99	+2.1 53% 1	-0.1 61% 96	-0.58 46% 1	+14 43% 78	+0.88 59% 57	+0.54 59% 1	+0.86 53% 7	\$209 40	\$371 30	
NGCN208 WWEL3 NGCG037	DULVERTON NEW APPROACH HBR	+44 87% 69	+0.2 73% 70	+3.6 62% 44	-6.3 95% 26	+4.2 93% 53	+54 95% 30	+93 95% 43	+121 88% 40	+121 85% 18	+12 85% 71	+1.5 92% 30	-5.4 55% 18	+78 89% 6	+11.7 88% 89	-2.1 87% 77	-1.9 88% 77	+1.9 80% 2	+1.2 89% 75	-0.18 79% 12	+35 81% 6	+1.04 85% 85	+1.14 85% 85	+1.00 82% 38	\$220 28	\$379 24	
BHRE614 VTMB219 BHRB681	DUNOON EVIDENT E614 ^{PV} HBR	+57 95% 58	-11.3 97% 99	-17.5 90% 99	+0.0 99% 97	+5.9 99% 85	+52 99% 41	+90 99% 50	+111 99% 63	+108 98% 35	+14 98% 75	+3.6 98% 8	-5.9 83% 19	+58 97% 74	+11.2 96% 8	-2.7 97% 95	-1.4 97% 69	+1.7 95% 3	+1.7 96% 61	+0.41 90% 78	+43 98% 1	+0.90 96% 61	+1.04 96% 66	+0.88 94% 9	\$173 77	\$279 88	
BHRH744 BNAD145 BHRD202	DUNOON HIGHPOINT H744 ^{SV} HBR	+51 90% 64	-7.3 84% 96	-9.5 73% 99	-4.3 97% 57	+6.9 97% 94	+56 96% 24	+97 96% 32	+128 96% 28	+126 93% 14	+17 93% 51	+2.9 95% 21	-5.1 69% 38	+85 92% 8	+5.7 91% 56	-1.8 91% 86	-1.3 91% 68	+1.4 87% 7	+1.0 92% 80	-0.65 84% 1	+28 92% 17	+0.68 89% 18	+0.82 89% 17	+1.10 86% 71	\$175 75	\$307 76	
USA16198796 USA14686137 USA15452880	EF COMPLEMENT 8088 ^{PV} HBR	+34 96% 78	+5.9 98% 24	+9.4 93% 2	-5.2 99% 42	+2.9 99% 25	+53 99% 37	+98 99% 28	+130 99% 24	+96 99% 57	+21 99% 17	+1.3 99% 78	-8.3 90% 1	+77 98% 21	+7.7 97% 21	+1.3 98% 14	+2.0 98% 14	+0.4 97% 53	+1.8 97% 58	+0.56 93% 89	+21 99% 41	+0.94 99% 69	+1.30 99% 97	+1.14 98% 81	\$270 2	\$443 2	
WWEQ15 VTMG67 WWEN17	ESSLEMONT GARTH Q15 ^{PV} HBR	+98 68% 25	-5.2 71% 92	+2.1 61% 59	-9.8 92% 3	+6.2 89% 89	+63 86% 6	+108 80% 9	+148 80% 5	+137 77% 7	+28 69% 2	+2.5 74% 33	-6.9 52% 6	+70 67% 39	+8.3 67% 26	-3.7 69% 99	-3.8 69% 95	+0.9 64% 23	+3.1 70% 24	-0.40 62% 3	+40 82% 3	+0.92 69% 65	+1.16 69% 87	+1.04 68% 52	\$232 17	\$396 14	
WWEL3 HIOG18 WWEJ8	ESSLEMONT LOTTO L3 ^{PV} HBR	+133 95% 9	-4.3 96% 90	-2.4 88% 90	-5.8 99% 33	+4.4 99% 58	+60 99% 12	+110 99% 8	+140 99% 11	+134 98% 9	+18 98% 39	+3.7 98% 7	-9.1 78% 1	+90 97% 4	+14.3 95% 2	+0.5 96% 36	+1.3 96% 22	+1.3 94% 9	+3.8 96% 13	+0.29 90% 64	+15 98% 72	+1.12 98% 92	+1.02 98% 62	+1.14 97% 81	\$287 1	\$466 1	
WWEQ24 WWEN12 WWEN7	ESSLEMONT QUOKKA Q24 ^{PV} HBR	+120 68% 14	+5.3 68% 29	+0.4 53% 74	-2.9 93% 78	+2.5 93% 19	+45 90% 72	+85 86% 67	+112 85% 61	+71 80% 89	+23 66% 10	+4.4 81% 2	-6.5 46% 10	+66 74% 52	+20.5 72% 1	+1.1 74% 24	+0.4 74% 36	+2.2 68% 1	+3.0 74% 26	+1.01 59% 99	+35 84% 6	+0.78 60% 36	+0.94 60% 42	+0.96 60% 26	\$281 1	\$420 5	
WWE21S6 NGMN418 WWEN7	ESSLEMONT SEAN S6 ^{PV} HBR	+105 67% 21	+6.2 60% 21	+5.4 51% 25	-6.3 79% 26	+3.6 75% 39	+58 76% 18	+100 74% 23	+121 74% 40	+91 73% 65	+18 65% 41	+4.4 71% 2	-6.0 44% 18	+83 67% 11	+18.1 67% 1	+2.3 68% 9	+1.6 68% 18	+1.2 62% 11	+3.5 70% 17	+0.79 60% 97	+33 63% 8	+1.04 64% 85	+1.18 64% 89	+1.04 63% 52	\$297 1	\$462 1	
Breed Average EBVs		+68.	+2.2	+2.6	-4.8	+4.0	+50	+90	+117	+100	+17	+2.1	-4.7	+66	+6.3	+0.0	-0.3	+0.5	+2.2	+0.19	+20	+0.84	+0.97	+1.03	+197	+340	

Angus Australia - MSA Marbling Research Breeding Values

Date: July 31, 2023

Page: 6

Ident	Name																										
Sire Dam	Reg.	MSA MBL RBV	Calv-Ease		Birth		Growth			Maternal			Fert			Carcase				Feed	Temp	Structural		Selection Index			
			Dir	Dtrs	GL	BW	200	400	600	MCW	Milk	SS	DC	CW	EMA	Rib	P8	RBY	IMF	NFI-F	Doc	Claw	Angle	Leg	\$A	\$A-L	
NFSM99 BHRH240 NFSH124	FARRER MAXWELL M99^{PV} HBR	+103 82% 22	-8.6 72% 97	+1.1 55% 68	+0.0 95% 97	+8.1 94% 99	+67 93% 3	+115 92% 4	+156 92% 3	+150 87% 3	+14 77% 72	+3.8 86% 6	-5.8 52% 21	+91 85% 4	+14.2 84% 2	-3.2 84% 97	-4.9 84% 98	+2.0 76% 1	+2.6 86% 36	+0.05 71% 33	+52 89% 1	+0.78 85% 36	+0.72 85% 6	+0.86 81% 7	\$241 11	\$406 9	
USA18217198 USA17354178 USA16934264	G A R ASHLAND^{PV} HBR	+97 88% 26	+1.1 94% 64	+1.0 80% 69	-6.5 99% 23	+3.4 99% 35	+68 99% 2	+117 99% 3	+148 99% 5	+124 97% 16	+18 96% 42	+1.4 98% 75	-3.0 55% 88	+81 94% 14	+13.1 92% 3	-3.0 92% 96	-3.2 91% 91	+1.2 87% 11	+3.1 92% 24	-0.09 74% 18	+8 98% 95	+1.24 99% 98	+1.08 99% 75	+0.84 96% 5	\$260 3	\$424 5	
USA16295688 USA13009379 USA15129456	G A R PROPHET^{SV} HBR	+114 97% 16	+3.5 98% 44	+4.6 92% 33	-1.0 99% 94	+3.6 99% 39	+66 99% 3	+107 99% 11	+132 99% 20	+81 99% 79	+24 99% 8	+0.7 99% 92	-5.9 89% 19	+71 98% 35	+3.4 97% 82	-0.5 97% 60	-1.1 97% 64	-0.8 97% 97	+4.7 97% 5	+0.63 93% 92	+27 99% 21	+1.02 99% 82	+0.82 99% 17	+0.90 98% 12	\$274 1	\$419 5	
USA17328461 USA16205036 USA16431932	G A R SURE FIRE^{SV} HBR	+133 94% 9	+7.1 94% 15	+3.6 82% 44	-3.3 99% 73	+2.3 99% 16	+50 98% 50	+90 98% 50	+110 98% 66	+75 97% 86	+18 98% 43	+4.1 98% 4	-6.9 77% 6	+64 96% 57	+7.6 95% 33	-0.2 95% 53	-0.2 95% 48	+0.8 94% 28	+3.2 95% 22	-0.21 87% 10	+29 95% 16	+1.16 99% 95	+0.94 99% 42	+0.62 92% 1	\$257 4	\$407 9	
ASRM9 HIOE7 ASRK93	GATES MENTOR M9^{SV} HBR	+112 83% 18	+2.4 75% 54	+4.3 64% 36	-3.2 95% 74	+6.2 93% 89	+62 91% 7	+110 90% 7	+146 91% 6	+129 84% 12	+19 80% 33	+4.1 81% 4	-6.6 58% 9	+87 85% 6	+11.4 82% 7	-5.0 83% 99	-5.9 83% 99	+2.0 75% 1	+3.0 85% 26	+0.41 76% 78	+8 79% 94	+1.00 81% 79	+1.18 82% 89	+1.18 78% 88	\$268 2	\$449 2	
USA18690054 USA17965471 USA18054344	GB FIREBALL 672^{PV} HBR	+165 81% 3	+2.6 90% 52	+5.6 66% 23	-5.1 99% 44	+2.6 99% 20	+62 98% 7	+100 98% 24	+130 98% 24	+120 95% 19	+16 90% 57	+2.8 98% 23	-6.5 47% 10	+77 89% 20	+14.3 89% 2	-2.2 87% 90	-3.8 85% 95	+1.1 80% 14	+5.0 88% 3	-0.25 62% 8	+7 98% 96	+0.96 99% 73	+0.94 99% 42	+0.88 94% 9	\$276 1	\$451 1	
QBGH221 BNAD145 QBGD80	GLENOCH HINMAN H221^{SV} HBR	+144 89% 6	+5.6 82% 26	-2.6 72% 91	-3.4 97% 71	+3.0 97% 27	+52 96% 38	+91 96% 49	+123 96% 37	+113 91% 28	+22 92% 15	+1.0 95% 86	-3.6 67% 78	+84 91% 9	+6.0 90% 52	-2.6 90% 94	-5.3 90% 99	+0.6 86% 40	+5.2 91% 3	-0.41 82% 3	+16 83% 68	+0.88 88% 57	+0.80 89% 14	+1.04 85% 52	\$203 47	\$350 47	
QBGK112 NAQA241 QBGG72	GLENOCH KALLANGUR K112^{PV} HBR	+34 88% 78	-6.2 77% 94	-2.4 67% 90	-4.1 93% 61	+6.8 95% 94	+56 94% 23	+98 94% 27	+125 94% 32	+102 87% 46	+16 85% 56	+2.0 91% 52	-7.4 61% 3	+93 89% 3	+12.2 88% 5	+1.2 87% 22	+3.5 88% 5	+0.6 81% 40	+2.3 90% 43	+0.48 81% 83	+19 80% 54	+0.74 91% 27	+0.76 91% 9	+0.68 88% 1	\$247 8	\$385 20	
EETN1 USA17031465 VSNL24	GVA NEWSWORTHY N1^{PV} HBR	+69 84% 47	+9.8 68% 3	+5.5 55% 24	-9.9 91% 3	+2.0 89% 13	+53 87% 34	+92 86% 45	+113 85% 58	+87 80% 71	+21 69% 19	+2.3 72% 40	-6.9 46% 6	+74 84% 28	+6.4 84% 47	-0.1 83% 50	-3.3 84% 92	+0.3 75% 59	+2.6 86% 36	+0.20 75% 53	+23 81% 33	+1.06 85% 87	+0.88 85% 28	+0.92 80% 16	\$230 18	\$387 19	
DKKM41 NORH708 DKKJ51	HARDHAT H708 MAIMURU J51 APR	+197 88% 1	+3.7 70% 43	+3.5 56% 45	-2.4 95% 84	+2.3 92% 16	+45 89% 71	+89 89% 54	+117 90% 51	+97 83% 55	+10 72% 93	+1.2 77% 81	-4.1 56% 67	+62 87% 62	+2.8 87% 87	+1.0 86% 26	-2.5 88% 85	-0.4 78% 91	+6.7 89% 44	+0.14 81% 44	+23 85% 33	+1.02 88% 82	+1.04 88% 66	+1.12 85% 76	\$208 42	\$353 44	
DKKQ110 NORK522 DKKM33	HARDHAT K522 KODAK M33 HBR	+116 66% 16	+7.4 70% 13	+10.1 57% 1	-8.2 89% 8	+2.4 89% 17	+49 84% 57	+88 79% 57	+117 79% 50	+107 76% 39	+16 67% 62	+2.8 75% 23	-5.9 47% 19	+60 71% 69	+7.4 65% 35	-1.6 68% 83	-3.4 68% 92	+0.8 63% 28	+3.7 69% 14	+0.24 60% 58	+11 79% 90	+0.66 75% 15	+0.68 76% 3	+0.72 73% 1	\$223 25	\$394 15	
DKKN43 NORK522 NKLF143	HARDHAT K522 NEBRASKA HBR	+1 86% 95	+10.0 72% 3	+8.4 59% 5	-10.2 94% 2	+2.0 95% 13	+61 92% 9	+109 91% 9	+144 88% 8	+133 83% 9	+16 71% 59	+5.2 84% 1	-5.9 50% 19	+82 87% 12	+3.2 85% 84	+0.8 85% 30	+0.4 86% 36	-0.5 77% 93	+0.2 88% 93	+0.14 78% 44	+9 88% 93	+0.76 90% 31	+0.86 90% 24	+0.88 85% 9	\$201 50	\$399 12	
DKKP156 DKKM4 DKKM5	HARDHAT KOD PUNCH M5 P156 HBR	+69 60% 48	+5.2 64% 29	+6.1 49% 19	-9.7 90% 3	+3.8 87% 44	+57 83% 19	+96 76% 34	+120 76% 42	+96 73% 56	+16 61% 60	+2.4 72% 36	-5.8 39% 21	+64 66% 56	+9.2 59% 18	-1.4 62% 79	-3.4 62% 92	+0.9 54% 23	+1.8 64% 58	-0.20 52% 10	+14 74% 80	+0.98 71% 76	+1.06 71% 71	+1.20 66% 91	\$236 14	\$391 16	
Breed Average EBVs		+68.	+2.2	+2.6	-4.8	+4.0	+50	+90	+117	+100	+17	+2.1	-4.7	+66	+6.3	+0.0	-0.3	+0.5	+2.2	+0.19	+20	+0.84	+0.97	+1.03	+1.97	+340	

Angus Australia - MSA Marbling Research Breeding Values

Date: July 31, 2023

Page: 7

Ident	Name																										
Sire Dam	Reg.	MSA MBL RBV	Calv-Ease		Birth		Growth			Maternal			Fert			Carcase				Feed	Temp	Structural		Selection Index			
			Dir	Dtrs	GL	BW	200	400	600	MCW	Milk	SS	DC	CW	EMA	Rib	P8	RBY	IMF	NFI-F	Doc	Claw	Angle	Leg	\$A	\$A-L	
NHZF1023 VTMB1 NHZB723	HAZELDEAN F1023 ^{SV} APR	+206 91% 1	+6.0 90% 23	+2.4 77% 56	-3.6 98% 69	+2.8 98% 23	+40 98% 88	+76 98% 86	+88 98% 94	+66 96% 93	+14 94% 72	+3.8 97% 6	-6.6 74% 9	+51 94% 88	+9.2 93% 18	+3.1 93% 4	+0.0 93% 44	+0.1 89% 71	+6.1 93% 86%	+1.31 86% 99	+5 97% 97	+0.48 97% 2	+0.98 96% 52	+1.04 94% 52	\$234 15	\$369 31	
NHZJ140 NAQA241 NHZC33	HAZELDEAN JAIPUR J140 ^{SV} HBR	+90 92% 30	+8.9 92% 6	+8.1 78% 6	-5.0 98% 46	+1.8 98% 11	+39 98% 91	+74 98% 90	+101 98% 81	+75 97% 86	+29 97% 1	+3.3 98% 12	-7.5 82% 3	+69 95% 41	+4.9 94% 66	-1.0 94% 71	-1.2 94% 66	+1.1 92% 14	+2.7 94% 33	+1.10 87% 99	+53 98% 1	+0.26 98% 1	+0.78 98% 11	+1.02 95% 45	\$218 31	\$364 35	
NHZK416 NORE11 NHZH342	HAZELDEAN KATZEN K416 ^{SV} APR	+8 91% 93	+9.8 88% 3	+5.0 76% 29	-11.6 98% 1	+2.1 98% 14	+55 97% 28	+93 97% 41	+121 97% 41	+101 95% 47	+17 94% 49	+3.5 97% 9	-8.4 72% 1	+73 93% 29	+1.0 92% 96	+4.2 90% 1	+2.7 92% 9	-0.6 87% 95	+0.8 93% 84	+0.29 86% 64	+56 97% 1	+1.02 95% 82	+1.02 95% 62	+1.04 92% 52	\$220 28	\$393 15	
NHZM586 NHZJ140 NHZH356	HAZELDEAN M586 ^{SV} APR	+182 89% 2	+8.9 84% 6	+9.6 65% 2	-9.1 98% 4	+2.3 98% 16	+50 96% 49	+91 96% 48	+121 96% 42	+100 94% 49	+18 88% 43	+4.3 95% 3	-9.8 62% 1	+73 92% 28	+7.6 90% 33	+0.9 90% 28	+0.7 90% 31	-0.1 84% 81	+5.5 91% 2	+0.98 82% 99	+44 93% 1	+0.50 92% 3	+0.94 92% 42	+1.10 88% 71	\$282 1	\$469 1	
NHZM182 NHZJ140 NHZK807	HAZELDEAN MAVERICK M182 ^{SV} APR	+144 74% 6	+3.0 79% 49	+5.4 59% 25	-5.3 97% 41	+2.9 97% 25	+48 95% 61	+92 96% 45	+130 96% 24	+100 87% 49	+22 74% 14	+3.5 95% 9	-4.8 53% 46	+78 81% 18	+9.5 80% 16	+0.7 81% 32	+0.6 81% 33	-0.1 75% 81	+5.0 80% 3	+1.25 63% 99	+67 93% 1	+0.42 91% 1	+0.70 90% 4	+1.04 85% 52	\$229 20	\$383 21	
NHZP434 NHZJ140 NHZL527	HAZELDEAN P434 ^{SV} APR	+106 72% 20	+10.5 72% 2	+7.0 57% 12	-7.7 97% 11	+1.5 95% 8	+47 94% 65	+86 93% 64	+112 93% 60	+95 84% 58	+19 71% 35	+2.9 90% 21	-7.4 55% 3	+74 78% 26	+4.3 76% 73	-0.9 78% 69	-3.0 77% 89	+0.9 73% 23	+3.3 77% 20	+0.67 63% 94	+48 89% 1	+0.60 84% 9	+0.94 84% 42	+0.94 78% 20	\$229 19	\$393 15	
NHZQ1229 NHZF1023 NHZJ823	HAZELDEAN Q1229 ^{PV} APR	+152 69% 5	+0.7 74% 67	+3.7 57% 43	-3.8 97% 65	+4.3 96% 55	+60 90% 12	+107 87% 11	+136 86% 15	+97 81% 55	+21 69% 17	+4.8 83% 1	-6.5 50% 10	+83 76% 10	+8.5 70% 24	-0.4 72% 58	-2.0 72% 78	+0.1 67% 71	+4.7 72% 5	+0.70 62% 95	+22 86% 37	+0.78 78% 36	+0.98 78% 52	+0.92 74% 16	\$266 2	\$423 5	
NHZQ319 NHZM586 NHZL1175	HAZELDEAN Q319 ^{PV} APR	+140 67% 7	+6.4 69% 20	+9.3 49% 3	-10.3 97% 2	+2.5 96% 19	+58 88% 18	+110 83% 8	+148 82% 5	+136 79% 8	+18 67% 40	+3.3 78% 12	-9.8 43% 1	+89 73% 5	+5.2 66% 62	+2.0 69% 12	+0.7 69% 31	-0.8 62% 97	+5.0 70% 3	+0.28 60% 63	+23 81% 35	+0.90 69% 61	+1.12 64% 82	+1.06 60% 58	\$278 1	\$492 1	
NHZR1561 NORL519 NHZJ115	HAZELDEAN RONALDO R1561 ^{PV} HBR	+90 66% 31	-4.8 72% 92	+3.0 59% 50	-7.0 94% 17	+6.3 92% 90	+66 80% 3	+111 77% 7	+145 78% 7	+140 77% 6	+11 69% 90	+0.2 76% 97	-4.9 50% 43	+80 70% 15	+5.4 66% 60	-0.5 68% 60	-1.1 68% 64	-0.1 63% 81	+3.4 69% 19	+0.34 59% 70	+16 65% 68	+0.66 76% 15	+0.70 75% 4	+0.92 70% 16	\$221 27	\$384 21	
DYFN6 NZE14647008839 DYFL18	INGLEBRAE FARMS NOBLEMAN HBR	+59 85% 56	+8.7 75% 7	+10.3 63% 1	-7.7 95% 11	+3.1 95% 29	+61 94% 9	+93 94% 43	+112 94% 62	+97 86% 56	+10 77% 94	+3.4 92% 11	-4.0 57% 69	+66 87% 51	+9.6 86% 16	+1.3 85% 21	+1.3 86% 22	+0.2 79% 66	+1.9 88% 55	-0.20 77% 10	+22 90% 40	+0.84 89% 49	+1.12 88% 82	+1.14 85% 81	\$235 15	\$399 13	
NZE13300018 WWEL3 NZE13300116373	KAKAHU PIVOTAL 18004 ^{PV} HBR	+133 72% 9	+3.3 74% 46	+1.2 60% 68	-8.7 95% 6	+4.2 96% 53	+56 92% 23	+103 89% 16	+121 91% 40	+71 83% 89	+26 71% 3	+3.3 87% 12	-7.4 52% 3	+81 77% 13	+11.0 76% 8	+1.1 77% 24	+1.2 77% 23	+0.6 73% 40	+3.6 77% 15	+0.44 63% 80	-5 88% 99	+0.72 78% 24	+1.00 76% 57	+1.14 70% 81	\$294 1	\$438 2	
GXNQ209 USA18463791 VLYL1327	KELLY ANGUS QUINN Q209 ^{SV} HBR	+49 65% 65	+10.8 66% 2	+10.1 50% 1	-8.0 90% 9	+0.7 89% 4	+62 85% 8	+109 84% 9	+136 82% 16	+103 79% 44	+26 68% 3	+0.6 75% 93	-6.8 42% 7	+83 72% 10	+6.2 71% 49	-0.7 73% 65	-2.1 72% 80	+0.3 67% 59	+2.5 72% 38	-0.08 54% 19	+16 56% 68	+1.24 69% 98	+1.28 69% 96	+1.16 63% 85	\$273 2	\$452 1	
NDIP481 USA17354145 NDIL236	KENNY'S CREEK PINNACLE P481 HBR	+130 72% 10	+3.5 74% 44	+1.9 59% 61	-5.2 97% 42	+2.9 96% 25	+51 94% 44	+90 93% 52	+116 93% 51	+73 85% 88	+19 72% 33	+0.3 89% 96	-3.2 54% 85	+64 78% 55	+5.5 78% 59	+1.1 79% 24	+0.9 78% 28	-1.2 74% 99	+5.3 78% 3	+0.91 63% 99	+32 87% 10	+0.78 69% 36	+0.98 69% 52	+0.90 66% 12	\$215 34	\$338 56	
Breed Average EBVs		+68.	+2.2	+2.6	-4.8	+4.0	+50	+90	+117	+100	+17	+2.1	-4.7	+66	+6.3	+0.0	-0.3	+0.5	+2.2	+0.19	+20	+0.84	+0.97	+1.03	+197	+340	

Angus Australia - MSA Marbling Research Breeding Values

Date: July 31, 2023

Page: 8

Ident	Name																										
Sire Dam	Reg.	MSA MBL RBV	Calv-Ease		Birth		Growth			Maternal			Fert			Carcase				Feed	Temp	Structural		Selection Index			
			Dir	Dtrs	GL	BW	200	400	600	MCW	Milk	SS	DC	CW	EMA	Rib	P8	RBY	IMF	NFI-F	Doc	Claw	Angle	Leg	\$A	\$A-L	
KILK18 USA16417285 USA15107929	KILLAIN ALASKA K18 ^{PV} HBR	-25 83% 99	-9.4 70% 98	-5.6 57% 97	+0.0 88% 97	+7.2 86% 96	+65 86% 4	+121 85% 2	+164 86% 1	+177 82% 1	+14 78% 76	+3.7 48% 7	-2.4 83% 93	+88 83% 6	+5.2 82% 62	-2.5 83% 93	-4.3 83% 97	+0.9 80% 23	-1.3 85% 99	-0.73 72% 1	+24 68% 29	+1.16 77% 95	+0.88 77% 28	+1.00 66% 38	\$116 98	\$279 88	
KILP1 USA18578965 KILM9	KILLAIN RAINMAN P1 ^{PV} HBR	-21 65% 99	-0.8 66% 76	-5.5 48% 97	-7.5 95% 13	+4.7 92% 64	+62 89% 7	+110 83% 7	+136 85% 15	+125 80% 14	+13 69% 79	+2.8 70% 23	-4.1 38% 67	+73 73% 29	+9.1 68% 19	-1.6 71% 83	-2.0 71% 78	+1.6 65% 4	-1.1 71% 99	-0.20 52% 10	+0 79% 99	+0.92 67% 65	+0.98 67% 52	+1.04 49% 52	\$197 54	\$350 46	
BLAP130 SRKK306 BLAK113	KNOWLA PACKER P130 ^{PV} HBR	+94 68% 28	+1.3 68% 63	-1.2 55% 84	-3.3 91% 73	+5.2 89% 74	+59 85% 15	+105 83% 13	+144 84% 8	+127 79% 13	+9 69% 95	+1.2 82% 81	-5.7 48% 23	+88 73% 6	+7.8 70% 30	+0.0 72% 48	-0.3 72% 50	+0.7 67% 33	+3.0 72% 26	+0.26 61% 60	+24 76% 30	+0.86 75% 53	+1.24 75% 94	+0.98 71% 32	\$246 8	\$414 7	
BLAP91 HIOG18 BLAL06	KNOWLA PEPPER P91 ^{PV} HBR	+73 72% 44	+6.4 73% 20	+4.1 61% 38	-6.4 95% 24	+3.8 94% 44	+62 92% 7	+121 88% 2	+156 90% 2	+163 83% 1	+12 72% 84	+1.8 88% 60	-8.9 56% 1	+84 78% 9	+9.0 76% 20	+2.5 77% 7	+2.1 77% 13	+0.5 73% 47	+2.7 77% 33	+0.53 64% 87	-8 88% 99	+0.98 86% 76	+1.08 87% 75	+0.94 83% 20	\$285 1	\$515 1	
BLAR190 BLAN127 BLAP172	KNOWLA REVOLUTION R190 ^{PV} HBR	+155 60% 4	+11.1 56% 1	+5.6 44% 23	-11.0 72% 1	+0.7 74% 4	+44 73% 76	+85 72% 5	+111 75% 9	+73 69% 88	+21 60% 21	+3.0 74% 18	-4.8 37% 46	+59 61% 70	+12.6 61% 4	+4.9 63% 1	+4.5 63% 2	-0.3 56% 88	+4.3 51% 8	+0.74 51% 96	+47 53% 1	+0.84 72% 49	+1.04 73% 66	+1.00 69% 38	\$240 11	\$385 20	
NZCP117 USA17960722 NZCM67	KO B074 BEAST MODE P117 ^{PV} HBR	+119 72% 14	+4.2 74% 38	+6.9 58% 13	-6.1 98% 28	+1.7 97% 10	+59 94% 14	+103 94% 17	+127 91% 29	+120 84% 20	+15 71% 66	+2.3 86% 40	-5.9 51% 19	+66 78% 49	+1.6 80% 94	+0.2 80% 43	-1.1 80% 64	-0.7 75% 96	+3.7 79% 14	+0.39 62% 76	+20 66% 45	+0.82 77% 44	+0.68 77% 3	+0.80 73% 3	\$219 29	\$396 14	
VLYR1549 USA18217198 VLYP251	LAWSONS ASHLAND R1549 ^{SV} HBR	+120 65% 14	-1.6 70% 80	-2.9 56% 92	-7.0 91% 17	+4.0 89% 48	+65 86% 4	+113 80% 5	+143 80% 9	+126 78% 14	+15 69% 68	+0.4 71% 95	-0.9 41% 99	+81 72% 12	+15.6 65% 1	-2.9 68% 96	-3.5 67% 93	+1.2 62% 11	+4.1 68% 9	+0.22 56% 55	+16 81% 69	+1.14 69% 94	+0.96 69% 47	+0.78 66% 2	\$235 15	\$381 22	
VLYN131 USA16295688 VLYL710	LAWSONS CHARLIE N131 ^{SV} HBR	+9 83% 92	-3.9 76% 89	-2.0 66% 88	-4.7 95% 51	+5.6 96% 81	+74 93% 1	+133 92% 1	+167 89% 1	+131 84% 10	+24 72% 6	+3.5 86% 9	-5.0 56% 41	+81 85% 13	+6.1 84% 51	-1.8 84% 86	-2.1 85% 80	+0.1 77% 71	+1.2 86% 75	+0.34 76% 70	+30 90% 14	+0.86 91% 53	+0.72 90% 6	+0.88 86% 9	\$242 10	\$409 9	
VLYL483 HKFJ5 VLYH221	LAWSONS LINKEDIN L483 ^{SV} HBR	+39 89% 74	+5.5 84% 27	-9.7 73% 99	-1.3 98% 92	+3.8 98% 44	+58 97% 17	+108 96% 9	+153 94% 6	+138 94% 6	+28 94% 1	+4.2 65% 3	-5.0 92% 41	+105 88% 14	+9.8 86% 14	-0.5 90% 60	+2.3 90% 11	+0.3 83% 59	+1.5 90% 67	-0.30 79% 6	+21 87% 41	+0.98 84% 76	+0.76 85% 9	+0.86 80% 7	\$212 37	\$385 20	
VLYQ44 VLYM518 VLYK914	LAWSONS MIRACULOUS Q44 ^{PV} HBR	+129 71% 10	+3.8 72% 42	-0.7 57% 82	-7.8 97% 11	+3.3 95% 33	+49 91% 53	+91 91% 47	+111 88% 63	+99 82% 52	+11 71% 90	+2.6 87% 29	-4.1 49% 67	+49 77% 90	+21.5 76% 1	+1.0 77% 26	+0.5 77% 35	+2.0 72% 1	+2.5 77% 38	+0.94 62% 99	+35 78% 6	+0.98 70% 76	+0.94 70% 42	+0.96 68% 26	\$248 7	\$397 14	
VLYM518 USA17354145 VLYH229	LAWSONS MOMENTOUS M518 HBR	+207 92% 1	-3.3 96% 87	-4.3 83% 95	-5.9 99% 31	+4.1 99% 51	+51 99% 46	+94 99% 40	+113 99% 58	+85 98% 74	+23 97% 12	+2.6 99% 29	-3.0 72% 88	+50 96% 89	+13.6 94% 2	-0.9 94% 69	-0.7 94% 57	+0.6 91% 40	+5.8 94% 2	+0.87 86% 99	+41 98% 2	+0.90 98% 61	+0.96 98% 47	+1.08 97% 65	\$226 22	\$342 53	
VLYE398 USA15464043 VLYB887	LAWSONS NADAL E398 ^{SV} HBR	+12 89% 91	-7.9 88% 97	-4.4 76% 95	-1.7 98% 90	+5.9 98% 85	+56 97% 22	+93 97% 42	+109 97% 68	+132 95% 10	-8 96% 99	+1.2 95% 81	-5.9 65% 19	+66 93% 49	+12.5 91% 4	-0.3 91% 55	-1.4 92% 69	+1.7 87% 3	+0.6 92% 88	+0.35 82% 71	+0 84% 99	+0.78 83% 36	+0.78 83% 11	+0.92 77% 16	\$186 66	\$330 62	
VLYP316 USA16295688 VLYM527	LAWSONS PROPHET P316 ^{PV} HBR	+122 69% 13	+5.0 72% 31	+4.1 60% 38	-2.0 92% 87	+3.6 95% 39	+59 90% 15	+93 86% 40	+113 83% 60	+70 79% 90	+18 70% 42	+0.9 74% 88	-5.3 54% 33	+70 75% 38	+10.3 72% 12	-3.6 74% 98	-3.9 74% 95	+1.3 70% 9	+3.5 74% 17	+0.26 63% 60	+29 81% 16	+0.66 80% 15	+0.68 80% 3	+0.82 75% 4	\$275 1	\$407 9	
Breed Average EBVs		+68.	+2.2	+2.6	-4.8	+4.0	+50	+90	+117	+100	+17	+2.1	-4.7	+66	+6.3	+0.0	-0.3	+0.5	+2.2	+0.19	+20	+0.84	+0.97	+1.03	+197	+340	

Angus Australia - MSA Marbling Research Breeding Values

Date: July 31, 2023

Page: 9

Ident	Name																											
Sire Dam	Reg.	MSA MBL RBV	Calv-Ease		Birth		Growth			Maternal			Fert			Carcase					Feed		Temp		Structural		Selection Index	
			Dir	Dtrs	GL	BW	200	400	600	MCW	Milk	SS	DC	CW	EMA	Rib	P8	RBY	IMF	NFI-F	Doc	Claw	Angle	Leg	\$A	\$A-L		
VLJR4010 USA17354145 VLYP4005	LAWSONS ROCKY R4010 ^{PV} HBR	+164 67% 3	+4.6	+2.9	-5.7	+2.7	+55	+97	+125	+96	+24	+2.7	-4.2	+68	+12.1	+1.2	+0.5	-0.1	+5.5	+1.15	+29	+0.94	+1.08	+1.08	\$250	\$402		
CHKM122 HKFJ5 CHKE251	MANEROO PARTNERSHIP M122 APR	+107 81% 20	+3.7	-5.0	-4.0	+3.7	+40	+76	+101	+95	+14	+1.8	-4.6	+56	+10.2	+1.9	+3.4	+0.4	+2.6	+0.38	+7	+1.22	+1.08	+0.94	\$182	\$314		
NZE14647010 NZE14647008839 NZE14647108860	MATAURI OUTLIER F031 ^{SV} HBR	+27 94% 83	-3.3	+2.1	-4.6	+6.7	+54	+102	+137	+146	+16	+2.2	-2.8	+70	+0.2	+3.1	+1.8	-0.7	+0.9	+0.07	+14	+0.78	+1.16	+1.28	\$128	\$285		
VRTP6 USA18219911 VRTJ2	MERRIBROOK PROGRESSION OF HBR	+2 82% 95	+10.1	+7.0	-11.5	+1.2	+58	+103	+123	+95	+18	+0.2	-3.5	+79	+6.7	-0.4	-2.9	+1.1	+0.7	-0.16	+30	+0.90	+0.92	+1.06	\$227	\$383		
NMMF159 NMMD78 NHZY275	MILLAH MURRAH DOC F159 ^{PV} HBR	-14 89% 98	-7.1	+4.3	-6.1	+6.9	+58	+108	+148	+130	+28	+2.5	-5.5	+96	+4.9	+1.2	+2.0	+0.3	+0.3	-0.16	+18	+0.94	+1.10	+1.06	\$190	\$341		
NMMG18 NZE12170004408 NMMD85	MILLAH MURRAH HIGHLANDER HBR	+16 89% 89	+0.3	-4.4	-3.7	+4.5	+49	+88	+110	+83	+22	+4.5	-3.5	+76	+10.5	-3.3	-1.8	+2.0	-0.1	+0.05	+11	+0.76	+0.90	+1.00	\$186	\$302		
NMMK35 NZE469 NMMG41	MILLAH MURRAH KINGDOM K35 HBR	-30 93% 99	-13.4	-8.3	-2.6	+9.0	+55	+99	+139	+150	+11	+0.8	-5.6	+63	+7.6	+0.2	+0.4	+1.0	-0.6	-0.69	+26	+0.82	+1.26	+1.18	\$136	\$270		
NMMK42 NGMT30 NMMH4	MILLAH MURRAH KLOONEY K42 HBR	+81 93% 37	+6.0	+2.9	-6.7	+5.7	+47	+86	+107	+92	+24	+2.1	-6.9	+64	+5.8	-1.3	-3.5	+1.1	+2.5	+0.16	+17	+0.82	+0.90	+1.02	\$217	\$365		
NMML133 USA17091363 NMMH49	MILLAH MURRAH LOCH UP L133 HBR	+35 93% 77	+4.6	+3.1	-6.0	+4.9	+58	+99	+132	+106	+26	+1.9	-1.7	+78	+1.9	-2.3	-4.1	-0.5	+1.7	-0.26	+35	+0.70	+1.06	+1.14	\$159	\$298		
NMMM308 NZE14647008839 NMMH331	MILLAH MURRAH MILESTONE HBR	+68 84% 48	+6.5	+6.6	-7.7	+4.6	+45	+79	+93	+80	+17	+2.3	-6.3	+47	+5.4	+2.2	+3.4	-0.1	+2.6	+0.18	+22	+0.86	+0.98	+1.20	\$214	\$359		
NJWH194 WDCE11 VTMX64	MILWILLAH ELEVATOR H194 ^{SV} HBR	-42 85% 99	-9.5	-9.3	-0.6	+8.1	+47	+96	+124	+152	+19	+1.3	-1.5	+50	+3.8	-2.3	+0.9	+0.9	-1.4	-0.37	+43	+0.20	+0.44	+0.86	\$70	\$198		
NJWH283 NJWF189 NJWE51	MILWILLAH ELSOM H283 ^{PV} HBR	+46 89% 67	+1.4	-3.6	-2.5	+3.6	+44	+79	+115	+97	+20	+1.9	-1.8	+71	+10.7	-2.0	-2.6	+1.7	+1.2	+0.41	+30	+0.76	+0.82	+1.06	\$158	\$274		
NJWE158 NZEE230 VTMX114	MILWILLAH LAD E158 ^{SV} HBR	+103 88% 22	-2.4	-7.3	-7.7	+8.1	+43	+82	+109	+110	+6	+1.9	-5.5	+45	+9.2	-1.0	-4.4	+1.3	+2.6	+0.19	+12	+0.74	+0.82	+0.72	\$164	\$292		
Breed Average EBVs		+68.	+2.2	+2.6	-4.8	+4.0	+50	+90	+117	+100	+17	+2.1	-4.7	+66	+6.3	+0.0	-0.3	+0.5	+2.2	+0.19	+20	+0.84	+0.97	+1.03	+197	+340		

Angus Australia - MSA Marbling Research Breeding Values

Date: July 31, 2023

Page: 10

Ident	Name																										
Sire Dam	Reg.	MSA MBL RBV	Calv-Ease		Birth		Growth			Maternal			Fert			Carcase				Feed	Temp	Structural		Selection Index			
			Dir	Dtrs	GL	BW	200	400	600	MCW	Milk	SS	DC	CW	EMA	Rib	P8	RBY	IMF	NFI-F	Doc	Claw	Angle	Leg	\$A	\$A-L	
BWFQ33 USA18181757 BWFN9	MOOGENILLA QUINELLA Q33 ^{PV} HBR	+130 69% 10	+0.6 77% 68	+9.5 58% 2	-6.0 98% 30	+4.1 98% 51	+59 97% 15	+116 95% 4	+144 86% 7	+84 81% 76	+25 71% 4	+2.7 91% 26	-3.9 47% 72	+94 77% 3	+11.6 74% 6	-1.0 75% 71	-0.5 75% 53	+0.1 70% 71	+4.4 75% 7	+0.42 61% 78	+36 93% 5	+0.80 69% 40	+0.94 69% 42	+0.88 65% 9	\$276 1	\$424 5	
BWFQ33 USA18181757 BWFN9	MOOGENILLA QUINELLA Q33 ^{PV} HBR	+130 69% 10	+0.6 77% 68	+9.5 58% 2	-6.0 98% 30	+4.1 98% 51	+59 97% 15	+116 95% 4	+144 86% 7	+84 81% 76	+25 71% 4	+2.7 91% 26	-3.9 47% 72	+94 77% 3	+11.6 74% 6	-1.0 75% 71	-0.5 75% 53	+0.1 70% 71	+4.4 75% 7	+0.42 61% 78	+36 93% 5	+0.80 69% 40	+0.94 69% 42	+0.88 65% 9	\$276 1	\$424 5	
EGRM39 HIOG18 EGRD9	MOSQUITO CREEK MAXIMUS HBR	+52 73% 62	+5.3 73% 29	+6.2 62% 18	-7.3 92% 15	+5.0 95% 71	+60 90% 10	+110 92% 8	+142 90% 9	+134 84% 9	+20 76% 27	+2.1 90% 48	-8.2 53% 1	+80 79% 15	+7.0 79% 39	+0.7 80% 32	+0.0 79% 44	+0.5 75% 47	+2.3 78% 43	+0.06 62% 34	+9 79% 93	+0.88 66% 57	+0.90 66% 32	+0.96 64% 26	\$264 3	\$462 1	
EGRQ53 USA18463791 EGRG2	MOSQUITO CREEK QUALITY Q53 HBR	+11 66% 92	+10.5 69% 2	+10.1 51% 1	-7.3 91% 15	-0.3 90% 2	+58 88% 18	+103 86% 17	+132 84% 20	+101 79% 48	+26 67% 3	+1.8 81% 60	-5.0 42% 41	+81 73% 13	+2.8 70% 87	+0.3 73% 41	-0.7 72% 57	-0.2 67% 85	+1.5 72% 67	-0.13 53% 15	+31 80% 11	+1.02 69% 82	+1.14 69% 85	+1.02 61% 45	\$224 24	\$393 15	
CSWP036 USA17236055 CSWL123	MURDEDUKE BLACK PEARL HBR	+193 87% 1	+2.3 73% 55	+1.5 62% 65	-8.7 95% 6	+5.4 93% 78	+47 93% 63	+89 89% 5	+126 89% 30	+111 84% 32	+19 74% 34	+3.2 87% 14	-4.6 57% 52	+55 87% 82	+3.0 86% 86	-0.2 87% 53	-1.5 87% 71	-0.8 79% 97	+5.9 89% 1	+0.60 79% 91	+12 93% 86	+0.82 92% 44	+1.16 92% 87	+1.18 88% 88	\$188 64	\$337 56	
CSWH211 VTME343 CSWE175	MURDEDUKE HUSSAR H211 ^{PV} HBR	+10 89% 92	+1.7 81% 60	+2.6 72% 54	-9.3 97% 4	+6.5 96% 92	+63 95% 7	+124 95% 1	+163 95% 1	+171 91% 1	+13 90% 82	+3.9 93% 5	-4.2 65% 64	+88 90% 6	+1.3 89% 95	-1.8 89% 86	-4.9 90% 98	+0.4 84% 53	-0.1 91% 96	-0.79 82% 1	+31 95% 12	+0.54 95% 5	+0.84 95% 20	+1.02 93% 45	\$162 84	\$362 37	
CSWK428 VTME343 CSWE175	MURDEDUKE KICKING K428 ^{PV} HBR	+18 90% 88	+9.2 85% 5	+9.3 73% 3	-8.3 98% 8	+1.8 98% 11	+49 97% 56	+95 97% 36	+119 96% 44	+91 94% 65	+25 92% 4	+3.6 97% 8	-5.1 66% 38	+67 92% 47	+1.4 91% 95	-0.1 88% 50	-2.3 91% 82	+0.3 85% 59	+0.5 92% 89	-0.10 84% 17	+44 97% 1	+0.90 97% 61	+1.02 97% 62	+1.20 95% 91	\$185 67	\$343 52	
CSWQ011 VLYM518 CSWN026	MURDEDUKE QUARTERBACK HBR	+165 75% 3	+7.7 81% 12	+2.3 62% 57	-10.0 99% 2	+2.7 99% 22	+54 98% 32	+104 98% 16	+138 97% 13	+112 87% 29	+23 72% 9	+4.4 98% 2	-5.8 54% 21	+77 80% 19	+6.7 85% 43	+1.9 83% 13	+2.2 83% 12	-0.9 78% 98	+5.0 83% 3	+0.82 66% 98	+25 98% 26	+0.78 96% 36	+1.06 96% 71	+1.02 94% 45	\$241 11	\$419 5	
NURG20 USA13058662 VTMD113	MURRAY EL GRANDO G20 ^{SV} HBR	+93 90% 28	-13.0 87% 99	+2.4 77% 56	-6.9 97% 18	+7.8 97% 98	+67 96% 3	+113 96% 5	+157 96% 2	+142 94% 5	+13 93% 83	+3.4 92% 11	-5.4 72% 30	+92 92% 3	+16.0 91% 1	-5.8 90% 99	-7.1 91% 99	+2.1 86% 1	+2.4 91% 41	-0.43 83% 3	+20 94% 48	+0.90 94% 61	+0.76 94% 9	+0.86 91% 7	\$223 25	\$368 32	
NURM208 SMPG357 NURK45	MURRAY GENESIS M208 ^{PV} HBR	+16 86% 90	+3.1 75% 48	+6.1 63% 19	-6.6 93% 22	+5.3 94% 76	+53 91% 34	+100 91% 22	+129 91% 25	+108 86% 37	+18 83% 39	+3.6 81% 8	-6.4 60% 12	+86 87% 7	+15.4 86% 1	-0.1 83% 50	-2.7 87% 87	+1.7 81% 3	+1.0 87% 80	+1.19 78% 99	+4 86% 98	+0.96 90% 73	+1.06 90% 71	+0.68 87% 1	\$242 10	\$408 9	
NURN70 NORK522 NURJ53	MURRAY KODAK N70 ^{PV} HBR	+137 87% 8	+3.4 74% 45	+6.2 58% 18	-7.3 97% 15	+4.5 97% 60	+59 94% 14	+103 94% 18	+136 93% 14	+138 86% 6	+13 75% 79	+5.1 91% 1	-6.4 54% 12	+80 88% 15	+9.9 87% 14	-1.5 86% 81	-2.0 87% 78	+0.8 79% 28	+3.9 89% 12	-0.37 80% 4	+22 91% 39	+0.94 91% 69	+0.92 91% 37	+0.92 87% 16	\$245 8	\$437 3	
NURM204 USA16956101 NURJ43	MURRAY PROCEED M204 ^{PV} HBR	+249 89% 1	-8.9 77% 97	+7.1 63% 11	-4.6 95% 52	+4.6 95% 62	+63 94% 7	+112 94% 5	+141 93% 10	+126 87% 14	+19 79% 35	+3.2 87% 14	-3.7 59% 76	+90 90% 4	+14.2 88% 2	-4.8 85% 99	-5.0 89% 99	+0.6 84% 40	+6.9 90% 1	+0.11 81% 40	+18 92% 60	+0.98 89% 76	+0.78 90% 11	+0.92 86% 16	\$238 13	\$385 20	
NURP54 USA16350631 NURM13	MURRAY TWINHEARTS P54 ^{PV} HBR	+93 82% 28	-0.1 70% 72	+3.3 57% 47	-6.6 92% 22	+7.4 90% 97	+74 87% 1	+127 87% 1	+168 85% 1	+160 82% 1	+22 72% 16	+2.3 77% 40	-4.2 50% 64	+106 83% 1	+8.1 83% 28	-1.7 83% 84	-3.6 83% 94	+0.6 75% 40	+3.0 85% 26	+0.27 74% 62	+18 81% 59	+0.88 87% 57	+1.24 87% 94	+0.94 82% 20	\$250 7	\$442 2	
Breed Average EBVs		+68.	+2.2	+2.6	-4.8	+4.0	+50	+90	+117	+100	+17	+2.1	-4.7	+66	+6.3	+0.0	-0.3	+0.5	+2.2	+0.19	+20	+0.84	+0.97	+1.03	+197	+340	

Angus Australia - MSA Marbling Research Breeding Values

Date: July 31, 2023

Page: 11

Ident	Name																										
Sire Dam	Reg.	MSA MBL RBV	Calv-Ease		Birth		Growth			Maternal			Fert		Carcase					Feed	Temp	Structural		Selection Index			
			Dir	Dtrs	GL	BW	200	400	600	MCW	Milk	SS	DC	CW	EMA	Rib	P8	RBY	IMF	NFI-F	Doc	Claw	Angle	Leg	\$A	\$A-L	
SFNL21 NZE10322010609 SFNH65	NAMPARA LIBERTY L21 ^{SV} HBR	-84 90% 99	-5.5 84% 93	-1.5 67% 86	-6.5 98% 23	+8.9 98% 99	+67 96% 3	+112 97% 6	+151 97% 4	+165 94% 1	+17 92% 48	+3.0 96% 18	-1.8 58% 96	+84 92% 37	+7.2 90% 87	-2.1 91% 61	-0.9 84% 3	+1.7 92% 99	-2.7 84% 1	-0.59 94% 52	+19 92% 49	+0.84 92% 20	+0.84 92% 38	+1.00 87% 92	\$144 92	\$304 78	
WLG P5 USA18229425 WLG M24	NARANDA PIMP P5 ^{SV} APR	+106 65% 21	+11.3 70% 1	+9.1 54% 3	-12.2 96% 1	+2.1 94% 14	+51 91% 43	+100 89% 23	+131 86% 23	+97 80% 54	+22 69% 14	+1.8 74% 60	-3.6 44% 78	+68 75% 44	+5.3 68% 61	+1.3 71% 21	+0.9 70% 28	-0.4 65% 91	+3.4 70% 19	+0.76 55% 97	+4 84% 98	+0.66 78% 15	+0.76 78% 9	+1.06 72% 58	\$221 27	\$384 21	
SKOJ6 VTME343 NZCE115	NEWLYN PARK EMPEROR J6 ^{PV} HBR	+7 84% 93	-11.1 75% 99	-6.2 66% 98	-8.0 92% 9	+8.4 90% 99	+69 89% 2	+114 88% 4	+152 89% 4	+160 85% 2	+8 78% 97	+1.9 78% 56	-5.1 61% 38	+86 85% 7	+7.6 84% 33	-1.0 84% 71	-1.5 85% 71	+1.2 78% 11	+0.1 86% 94	-0.57 76% 1	+26 78% 22	+1.10 85% 91	+0.76 85% 9	+0.78 80% 2	\$186 66	\$340 54	
NZE21095018 HIOE7 NZE21095112H49	NGAPUTAH I P206 ^{SV} HBR	+123 74% 13	+10.7 74% 2	+7.1 64% 11	-1.5 92% 91	-0.1 95% 2	+41 92% 86	+85 92% 67	+98 88% 85	+67 83% 92	+28 73% 1	+2.7 91% 26	-6.3 60% 13	+62 79% 62	+6.7 79% 43	+0.4 80% 38	-0.4 80% 51	+1.0 75% 18	+3.5 78% 17	+0.56 67% 89	+21 83% 41	+0.96 73% 73	+1.10 73% 78	+1.12 71% 76	\$239 12	\$383 21	
USA16981588 USA16381311 USA16408070	PA FULL POWER 1208 ^{PV} HBR	+116 92% 16	-5.5 93% 93	-4.4 82% 95	-5.6 99% 36	+3.7 98% 41	+52 98% 41	+98 98% 27	+119 98% 44	+77 97% 84	+14 97% 77	+1.9 98% 56	-3.0 71% 88	+68 95% 44	+12.4 94% 4	-1.4 94% 79	+0.6 94% 33	+0.8 91% 28	+3.4 94% 99	+0.78 85% 97	+25 98% 27	+1.24 98% 98	+0.96 98% 47	+0.70 90% 1	\$223 25	\$330 62	
USA17585042 USA16651533 USA17193464	PA RANCH HOUSE 349 ^{PV} HBR	+69 91% 48	+6.6 86% 18	+3.2 68% 48	-5.8 98% 33	+4.0 98% 48	+51 97% 47	+89 97% 54	+113 95% 58	+89 95% 68	+26 95% 4	+0.1 96% 98	-2.6 62% 92	+61 93% 65	+6.0 92% 52	-0.2 92% 53	+2.1 92% 13	+0.4 89% 53	+1.8 93% 58	+0.70 83% 95	-4 86% 99	+1.52 94% 99	+1.42 94% 99	+0.90 90% 12	\$204 46	\$339 55	
HKFE27 VTMA149 FAFC1	PARINGA IRON ORE E27 ^{PV} HBR	+110 88% 18	+8.1 81% 10	+2.0 69% 60	-8.0 97% 9	+2.1 96% 14	+37 94% 94	+70 94% 93	+94 94% 89	+92 90% 64	+15 91% 66	+2.2 91% 44	-7.0 63% 6	+66 90% 49	+8.4 89% 25	+1.0 89% 26	+1.5 90% 19	+1.5 83% 5	+1.7 90% 61	+0.41 82% 78	+41 86% 2	+0.84 84% 49	+0.92 84% 37	+0.96 79% 26	\$201 50	\$350 46	
SMPG357 VTMB1 SMPD245	PATHFINDER GENESIS G357 ^{PV} HBR	-1 94% 96	+2.5 96% 53	+5.6 87% 23	-7.8 99% 11	+6.7 99% 93	+62 99% 8	+109 99% 8	+147 99% 6	+140 98% 5	+26 98% 3	+4.3 98% 3	-5.7 82% 23	+96 97% 2	+14.1 95% 2	+0.9 96% 28	-1.4 96% 69	+1.4 94% 7	+0.2 95% 93	+0.63 89% 92	+30 98% 14	+0.84 97% 49	+1.04 98% 66	+0.76 96% 2	\$232 17	\$418 6	
SMPK22 SMPG357 SMPH756	PATHFINDER COMPLETE K22 ^{SV} HBR	+71 92% 45	+11.4 91% 1	+10.2 75% 1	-9.7 99% 3	+0.7 98% 4	+39 98% 90	+73 98% 90	+92 98% 91	+41 96% 99	+28 97% 2	+3.0 70% 19	-5.9 94% 19	+49 93% 43	+6.7 93% 43	+4.1 93% 2	+5.4 94% 1	+0.1 92% 71	+2.2 93% 46	+0.45 86% 81	+28 96% 18	+0.48 96% 2	+0.86 96% 24	+0.66 94% 1	\$233 16	\$358 40	
SMPM651 VTMG67 SMPH66	PATHFINDER MASTERPIECE HBR	+80 84% 38	+1.4 75% 62	+4.1 65% 38	-5.6 90% 36	+5.4 94% 78	+59 91% 14	+106 91% 11	+137 85% 14	+142 81% 5	+20 85% 24	+3.3 85% 12	-8.2 60% 1	+62 86% 61	+9.6 84% 16	-2.1 85% 89	-3.4 78% 92	+1.4 86% 7	+2.0 76% 52	-0.23 67% 9	+48 70% 1	+0.96 77% 73	+1.18 77% 89	+1.12 74% 76	\$244 9	\$435 3	
SMPM558 VTMG67 SMPH458	PATHFINDER MAXIMUS M558 ^{PV} HBR	+103 88% 22	-1.6 80% 80	+2.6 68% 54	-7.0 96% 17	+5.8 97% 84	+59 95% 14	+98 95% 28	+128 95% 26	+129 90% 11	+24 90% 6	+4.6 92% 2	-8.4 62% 1	+54 90% 82	+9.6 88% 16	-2.1 87% 89	-0.5 89% 53	+0.6 85% 40	+2.9 89% 28	-0.25 80% 8	+48 77% 1	+0.92 78% 65	+1.04 78% 66	+0.88 74% 9	\$238 13	\$411 8	
SMPN56 HIOG18 SMPL179	PATHFINDER NUCLEUS N56 ^{SV} HBR	+52 89% 63	+4.0 75% 40	+4.0 61% 39	-3.9 96% 64	+5.4 96% 78	+62 94% 8	+108 94% 9	+140 94% 11	+126 88% 14	+16 82% 60	+4.2 92% 3	-6.6 55% 9	+81 90% 13	+13.6 89% 2	+0.7 88% 32	+0.9 89% 28	+1.0 80% 18	+1.7 90% 61	+0.33 83% 69	+19 84% 53	+0.72 85% 24	+0.80 85% 14	+0.80 81% 3	\$267 2	\$453 1	
SMPP516 SMPM558 SMPJ282	PATHFINDER PHAT CAT P516 ^{SV} HBR	+150 70% 5	+4.7 69% 34	+2.1 54% 59	-9.1 96% 4	+5.2 96% 74	+53 92% 35	+93 91% 40	+118 90% 47	+90 82% 66	+28 70% 2	+4.8 86% 1	-8.6 48% 1	+60 77% 69	+9.8 74% 14	-2.3 75% 91	-0.8 75% 59	+0.3 70% 59	+4.6 75% 5	+0.16 62% 47	+43 86% 2	+0.80 76% 40	+1.10 76% 78	+1.02 70% 45	\$268 2	\$427 4	
Breed Average EBVs		+68.	+2.2	+2.6	-4.8	+4.0	+50	+90	+117	+100	+17	+2.1	-4.7	+66	+6.3	+0.0	-0.3	+0.5	+2.2	+0.19	+20	+0.84	+0.97	+1.03	+197	+340	

Angus Australia - MSA Marbling Research Breeding Values

Date: July 31, 2023

Page: 12

Ident	Name																										
Sire Dam	Reg.	MSA MBL RBV	Calv-Ease		Birth		Growth			Maternal			Fert			Carcase					Feed	Temp	Structural		Selection Index		
			Dir	Dtrs	GL	BW	200	400	600	MCW	Milk	SS	DC	CW	EMA	Rib	P8	RBY	IMF	NFI-F	Doc	Claw	Angle	Leg	\$A	\$A-L	
SMPP41 VTMG67 SMPM53	PATHFINDER PREMIUM P41 ^{SV} APR	+113 72% 17	+1.5 73% 61	+7.1 62% 11	-5.1 94% 44	+4.8 94% 66	+59 91% 13	+106 91% 12	+143 90% 8	+129 84% 12	+22 73% 12	+4.1 87% 4	-8.3 56% 1	+57 78% 75	+4.1 76% 76	-0.5 77% 60	-0.2 77% 48	-0.1 73% 81	+3.7 77% 77	+0.14 65% 44	+25 81% 28	+0.84 69% 49	+1.18 69% 89	+1.18 69% 88	\$250 6	\$438 2	
SMPQ1357 NORL519 SMPM18	PATHFINDER QUEST Q1357 ^{PV} HBR	+119 66% 14	+1.2 72% 63	-1.5 60% 86	-6.2 94% 27	+4.9 94% 69	+62 92% 8	+113 86% 5	+157 83% 2	+159 79% 2	+18 70% 37	+2.1 74% 48	-5.8 51% 21	+84 75% 9	+7.3 66% 36	-0.2 69% 53	-1.5 69% 71	+0.6 63% 40	+3.6 69% 15	+0.43 59% 79	+34 84% 7	+0.86 69% 53	+0.76 69% 9	+0.96 69% 26	\$235 15	\$427 4	
NZE41-97 NZE53195 NZE63988	PINEBANK WAIGROUP 41/97 [#] HBR	+18 94% 89	+4.2 95% 38	-5.3 89% 97	-4.0 98% 62	+3.5 98% 37	+37 98% 94	+62 98% 98	+73 98% 99	+48 98% 99	+19 98% 35	+0.8 97% 90	-3.2 87% 85	+17 96% 99	+5.0 95% 65	+1.3 96% 21	+0.5 96% 35	+0.8 94% 28	+1.2 95% 75	-0.13 89% 15	+25 90% 26	+0.34 87% 1	+0.94 87% 42	+1.02 81% 45	\$151 89	\$234 96	
WQCQ47 VLYM518 VLYM1690	QUANDEN SPRINGS HBR	+160 67% 4	+11.4 71% 1	+8.9 57% 3	-9.9 91% 3	-1.4 91% 1	+50 87% 51	+97 82% 31	+130 83% 24	+109 78% 35	+28 69% 1	+5.1 76% 1	-4.6 46% 52	+51 73% 88	+11.8 67% 6	+0.3 69% 41	-0.3 69% 50	+0.3 64% 59	+4.1 70% 9	+0.38 60% 75	+22 85% 39	+1.10 70% 91	+1.10 74% 78	+1.06 70% 58	\$232 17	\$409 9	
NORE11 NGMY145 VLYY5	RENNYLEA EDMUND E11 ^{PV} HBR	+113 97% 17	+10.0 99% 3	+0.8 96% 71	-7.3 99% 15	+1.1 99% 6	+34 99% 97	+64 99% 96	+84 99% 96	+54 99% 97	+16 99% 56	+1.8 99% 60	-7.3 94% 4	+51 98% 88	+4.9 98% 66	+3.4 98% 3	+1.4 98% 21	-0.3 98% 88	+4.3 98% 8	+0.78 95% 97	+25 99% 26	+0.56 99% 6	+1.00 99% 57	+1.12 99% 76	\$201 49	\$322 68	
NORG255 BNAD145 NORC490	RENNYLEA G255 ^{PV} APR	+132 94% 10	-12.0 94% 99	-8.1 86% 99	-3.6 98% 69	+4.6 98% 62	+51 98% 45	+95 98% 37	+129 98% 25	+127 98% 13	+21 98% 19	+0.7 97% 92	-3.8 81% 74	+90 96% 4	+7.8 95% 30	-0.3 95% 55	-3.2 96% 91	+0.7 93% 33	+4.8 94% 4	-0.11 90% 16	+13 97% 83	+1.22 94% 97	+0.92 94% 37	+0.84 92% 5	\$164 83	\$280 87	
NORH708 NORC511 NORE176	RENNYLEA H708 ^{PV} APR	+261 93% 1	-4.4 91% 91	+0.0 80% 77	+1.1 98% 99	+4.9 98% 69	+50 98% 49	+102 98% 18	+132 98% 20	+131 97% 10	+9 95% 96	+2.6 97% 29	-3.8 75% 74	+72 95% 33	+13.0 94% 3	-3.5 94% 98	-6.4 94% 99	+1.9 91% 2	+7.1 94% 1	+0.70 91% 95	+26 98% 22	+0.74 95% 27	+0.76 95% 9	+1.02 93% 45	\$233 16	\$387 19	
NORK835 NORG420 NORH514	RENNYLEA K835 ^{PV} APR	+111 87% 18	-3.8 81% 89	-5.1 66% 96	-2.0 98% 87	+6.6 95% 92	+51 95% 46	+91 95% 48	+117 90% 50	+98 87% 53	+13 87% 83	+3.2 89% 14	-5.7 60% 23	+56 89% 79	+8.7 88% 22	+0.7 87% 32	-1.0 88% 62	+0.2 84% 66	+4.1 89% 9	-0.13 78% 15	+15 90% 75	+0.64 88% 13	+1.12 88% 82	+1.10 85% 71	\$206 44	\$335 59	
NORK522 NORE11 NORF810	RENNYLEA KODAK K522 ^{SV} HBR	+140 91% 7	+10.7 93% 2	+10.9 80% 1	-5.5 99% 37	+1.2 99% 6	+46 98% 70	+85 98% 66	+111 98% 63	+109 97% 35	+10 98% 94	+4.6 98% 2	-6.3 71% 13	+56 95% 78	+4.3 93% 73	+3.5 93% 3	+1.9 93% 15	-0.4 91% 91	+4.1 93% 9	+0.37 86% 74	+6 95% 97	+0.64 96% 13	+0.82 96% 17	+0.98 95% 32	\$211 38	\$392 16	
NORL508 USA17366506 NORH414	RENNYLEA L508 ^{PV} HBR	+169 92% 3	+2.4 94% 54	+8.8 81% 4	-6.5 99% 23	+2.5 99% 19	+46 98% 68	+86 98% 63	+117 98% 50	+91 98% 64	+26 97% 3	+1.3 98% 78	-5.9 74% 19	+57 95% 76	+6.2 94% 49	+1.6 95% 16	-0.7 92% 57	-0.3 94% 88	+5.5 86% 2	+0.56 86% 89	+20 98% 50	+0.74 97% 27	+0.92 97% 37	+0.90 95% 12	\$225 23	\$371 29	
NORL683 NORE11 NORJ631	RENNYLEA L683 ^{PV} APR	+35 88% 77	+2.0 83% 57	+0.6 71% 73	-5.2 98% 42	+5.3 97% 76	+55 96% 28	+93 96% 41	+119 96% 46	+104 93% 43	+5 90% 99	+1.9 94% 56	-5.9 65% 19	+80 90% 14	+5.9 89% 53	+0.5 87% 36	-1.6 89% 73	+0.9 84% 23	+2.0 90% 52	+0.71 83% 95	+20 95% 45	+0.74 88% 27	+0.86 88% 24	+0.98 85% 32	\$222 26	\$372 29	
NORM1078 NORH708 NORF563	RENNYLEA M1078 ^{SV} APR	+269 89% 1	-2.2 74% 83	-3.0 62% 92	-2.4 97% 84	+3.1 96% 29	+40 95% 89	+81 95% 75	+101 94% 81	+91 92% 66	+11 85% 89	+1.9 92% 56	-5.1 55% 38	+60 90% 69	+10.8 89% 9	-1.3 89% 77	-4.6 90% 98	+0.8 81% 28	+8.0 91% 1	+0.89 82% 99	+11 94% 90	+0.98 87% 76	+1.04 87% 66	+1.20 84% 91	\$216 33	\$340 54	
NORP987 NORM763 NORM1184	RENNYLEA P987 ^{PV} APR	+219 71% 1	+9.6 72% 4	+8.5 56% 5	-8.7 95% 6	+1.9 95% 12	+52 93% 41	+100 92% 22	+131 92% 22	+122 85% 18	+14 72% 77	+1.2 90% 81	-4.7 49% 49	+78 78% 18	+4.9 77% 66	+4.4 78% 1	+3.2 78% 6	-1.9 73% 99	+8.2 77% 1	+0.98 61% 99	+8 93% 94	+0.92 63% 65	+0.92 63% 37	+1.08 60% 65	\$239 12	\$426 4	
Breed Average EBVs		+68.	+2.2	+2.6	-4.8	+4.0	+50	+90	+117	+100	+17	+2.1	-4.7	+66	+6.3	+0.0	-0.3	+0.5	+2.2	+0.19	+20	+0.84	+0.97	+1.03	+197	+340	

Angus Australia - MSA Marbling Research Breeding Values

Date: July 31, 2023

Page: 13

Ident		Name																													
Sire Dam	Reg.	MSA MBL RBV	Calv-Ease		Birth		Growth			Maternal			Fert			Carcase					Feed	Temp	Structural		Selection Index						
			Dir	Dtrs	GL	BW	200	400	600	MCW	Milk	SS	DC	CW	EMA	Rib	P8	RBY	IMF	NFI-F	Doc	Claw	Angle	Leg	\$A	\$A-L					
NORQ1081 NORH708 NORL841	RENNYLEA Q1081 ^{PV} APR	+224 70% 1	+1.9 70% 58	+4.0 57% 39	-4.9 92% 47	+3.3 91% 33	+51 89% 46	+91 85% 58	+113 84% 48	+94 81% 60	+11 70% 91	+3.1 82% 16	-6.0 52% 18	+51 76% 88	+11.8 72% 6	+0.6 74% 34	-0.8 69% 59	+0.7 74% 33	+6.4 64% 92	+0.61 87% 71	+16 69% 53	+0.86 73% 52	+0.98 69% 26	+0.96 69% 2	\$267 6	\$419					
NORQ213 NORK907 NORL110	RENNYLEA Q213 ^{PV} APR	+53 71% 62	+10.5 73% 2	+7.9 58% 7	-7.8 96% 11	+1.0 96% 5	+66 94% 4	+124 94% 1	+154 93% 3	+109 85% 35	+28 72% 2	+0.6 93% 93	-8.6 51% 1	+102 78% 1	+10.5 79% 11	-0.6 78% 62	-1.0 73% 53	+0.4 78% 15	+3.6 62% 91	+0.60 92% 21	+27 82% 7	+0.58 83% 7	+0.74 78% 3	+0.80 78% 1	\$332 1	\$529					
NORR992 NORN542 NORM1034	RENNYLEA R992 ^{PV} APR	+166 64% 3	+5.7 68% 25	+3.2 53% 48	+2.1 93% 99	+0.6 93% 4	+43 90% 80	+80 83% 79	+102 82% 79	+66 79% 93	+25 67% 5	+1.8 79% 60	-6.2 43% 14	+61 72% 65	+12.0 66% 5	+3.1 68% 4	+4.2 68% 3	-0.3 62% 88	+6.0 69% 1	+0.94 55% 99	+34 87% 8	+0.64 65% 13	+0.84 65% 20	+0.86 64% 7	\$259 4	\$395					
TRHP52 TRHL9 TRHH92	RICHMOND HILL PLAY P52 ^{SV} HBR	+108 59% 19	+3.9 66% 41	+2.7 49% 53	-0.2 92% 97	+3.9 92% 46	+49 89% 52	+84 82% 68	+110 80% 65	+113 75% 28	+13 64% 79	+4.2 73% 3	-4.6 36% 52	+67 70% 48	+8.7 61% 22	-4.7 65% 99	-5.3 65% 99	+1.7 57% 3	+2.4 65% 41	-0.18 50% 12	+33 87% 9	+1.06 76% 87	+0.96 77% 47	+1.12 70% 76	\$187 65	\$340					
USA16396573 USA0035 USA15688516	S A V CAMARO 9272 ^{SV} HBR	+65 90% 51	+7.2 84% 15	+3.0 69% 50	-7.8 97% 11	+3.6 97% 39	+45 96% 71	+72 95% 91	+91 96% 92	+83 92% 77	+10 94% 94	+1.7 90% 64	-6.7 60% 8	+38 92% 99	-0.8 91% 58	-0.4 90% 82	-2.3 90% 82	+0.5 83% 47	+1.7 92% 99	+1.16 82% 99	+12 83% 86	+1.14 86% 94	+0.80 85% 14	+0.80 78% 3	\$178 73	\$315					
NZE21159019 USA18217198 NZE21159117053	SEVEN HILLS 312/19 ^{PV} HBR	+97 65% 26	+1.6 69% 60	+2.3 54% 57	-8.4 92% 7	+3.6 89% 39	+56 86% 25	+99 80% 25	+126 80% 30	+100 77% 49	+23 68% 10	-0.5 71% 99	-2.5 38% 93	+72 71% 32	+10.4 65% 11	-3.8 67% 99	-5.3 67% 11	+1.2 61% 13	+3.8 68% 73	+0.36 55% 73	+8 81% 94	+1.04 74% 85	+0.92 74% 37	+0.92 69% 16	\$224 24	\$358					
NZE21159018 NZE21159016295 NZE21159116096	SEVEN HILLS 410/18 ^{SV} HBR	+119 63% 14	-0.7 68% 76	-1.1 50% 84	-0.9 93% 94	+3.2 91% 31	+49 88% 57	+96 85% 32	+124 83% 35	+94 81% 60	+19 66% 33	+1.4 65% 75	-3.5 39% 80	+75 71% 25	+7.2 68% 37	-0.1 71% 50	+0.4 70% 36	+0.1 64% 71	+4.0 70% 10	+0.69 51% 95	+28 84% 19	+0.66 70% 15	+0.78 70% 11	+1.12 64% 76	\$208 42	\$339					
APBK11 VTMB1 APBF2	SHACORRAHDALU KINETIC K11 HBR	+83 69% 36	+11.3 73% 1	+11.4 64% 1	-9.4 91% 4	+0.8 90% 4	+50 87% 51	+92 84% 46	+108 83% 69	+98 81% 53	+10 77% 95	+5.2 80% 1	-8.0 58% 1	+61 76% 65	+9.5 68% 16	+2.4 71% 8	+0.8 71% 30	+0.9 66% 23	+1.6 71% 64	+0.68 65% 94	+7 79% 96	+0.94 74% 69	+1.08 72% 75	+0.98 70% 32	\$249 7	\$433					
APB21S24 USA18636106 APBJ23	SHACORRAHDALU PHOENIX HBR	+47 65% 67	+10.0 64% 3	+7.2 53% 11	-7.2 83% 15	-0.4 79% 1	+56 76% 24	+102 74% 18	+132 75% 20	+85 73% 74	+24 68% 6	+3.5 71% 9	-7.8 44% 2	+88 67% 5	+5.2 65% 62	+2.3 66% 9	+3.4 66% 5	-0.1 61% 81	+1.9 69% 55	+0.54 58% 88	+16 57% 70	+0.92 71% 65	+1.10 70% 78	+1.00 66% 38	\$273 1	\$444					
APBR5 TFAK132 HBUP80	SHACORRAHDALU ROYALE R5 HBR	+104 64% 22	+7.8 70% 11	+8.1 56% 6	-6.8 90% 20	+2.1 90% 14	+50 86% 48	+94 81% 38	+117 80% 49	+73 77% 88	+23 68% 10	+1.8 77% 60	-5.9 45% 19	+73 72% 31	+10.0 64% 13	+2.3 67% 9	+2.8 67% 8	+0.4 61% 53	+3.2 68% 22	+0.54 57% 88	+21 79% 41	+0.82 77% 44	+1.02 73% 62	+0.80 68% 3	\$271 2	\$424					
SYAN340 SYAL178 SGMK250	STONEY POINT NOLTE N340 ^{SV} HBR	+73 83% 44	-1.2 72% 78	-6.7 60% 98	-6.3 96% 26	+7.0 96% 95	+75 95% 1	+138 94% 1	+170 94% 1	+163 88% 1	+19 78% 32	+3.6 90% 8	-5.0 48% 41	+116 86% 1	+6.7 84% 43	-3.4 84% 98	-5.6 85% 99	+0.8 76% 28	+2.6 86% 36	-0.13 72% 15	+5 88% 97	+0.90 87% 61	+0.86 87% 24	+1.24 83% 95	\$244 9	\$436					
SYAP147 USA17936442 SWAH233	STONEY POINT PERRY P147 ^{PV} HBR	+93 65% 29	+5.6 69% 26	+3.0 51% 50	-5.3 93% 41	+4.2 92% 53	+57 90% 18	+106 86% 12	+131 82% 22	+104 78% 43	+24 69% 8	+1.4 82% 75	-5.9 42% 19	+88 73% 5	+11.3 69% 7	-2.3 71% 91	-3.2 70% 91	+0.8 65% 28	+3.6 71% 15	-0.29 56% 6	+15 86% 74	+0.84 76% 49	+0.80 77% 14	+0.84 68% 5	\$262 3	\$426					
NZE19507018 NORL508 NZE19507113J320	STORTH OAKS FULLY LOADED HBR	+149 72% 5	+7.5 76% 13	+8.2 59% 6	-12.2 97% 1	+1.3 96% 7	+45 95% 74	+85 93% 65	+126 92% 32	+119 84% 21	+18 72% 42	+2.9 88% 21	-5.7 51% 23	+64 78% 56	+4.6 76% 70	+1.5 78% 18	+1.3 77% 22	-0.7 72% 96	+4.6 77% 5	+0.51 63% 86	+33 91% 8	+0.62 76% 10	+0.86 77% 24	+1.00 73% 38	\$200 51	\$378					
Breed Average EBVs		+68.	+2.2	+2.6	-4.8	+4.0	+50	+90	+117	+100	+17	+2.1	-4.7	+66	+6.3	+0.0	-0.3	+0.5	+2.2	+0.19	+20	+0.84	+0.97	+1.03	+1.97	+340					

Angus Australia - MSA Marbling Research Breeding Values

Date: July 31, 2023

Page: 14

Ident	Name																										
Sire Dam	Reg.	MSA MBL RBV	Calv-Ease		Birth		Growth			Maternal			Fert		Carcase					Feed	Temp	Structural		Selection Index			
			Dir	Dtrs	GL	BW	200	400	600	MCW	Milk	SS	DC	CW	EMA	Rib	P8	RBY	IMF	NFI-F	Doc	Claw	Angle	Leg	\$A	\$A-L	
NZE19507013 VTME343 NZE19507111G183	STORTH OAKS JACK J7 ^{SV} HBR	+43 91% 70	+7.1	+10.3	-5.3	+4.7	+60	+113	+153	+144	+20	+3.3	-2.1	+84	+8.3	-0.2	-2.8	-0.3	+2.3	+0.21	+23	+1.00	+1.00	+0.92	\$190	\$381	
VSNG34 VTMB1 VSNE22	STRATHEWEN BERKLEY G34 ^{PV} HBR	+57 89% 58	+8.1	+8.3	-7.6	+3.9	+57	+104	+140	+143	+17	+2.1	-7.0	+83	+6.2	+1.1	+0.3	+0.5	+1.3	-0.16	+17	+1.10	+1.24	+1.10	\$229	\$433	
USA17236055 USA15354674 USA16214508	SYDGEN BLACK PEARL 2006 ^{PV} HBR	+89 95% 31	+4.3	+8.3	-7.5	+3.2	+51	+85	+122	+85	+22	+1.6	-3.2	+74	+8.7	+0.3	-0.5	+0.5	+2.3	+0.06	+14	+1.04	+1.20	+1.14	\$211	\$346	
VTMA149 VTMX60 VTMU338	TE MANIA ADA A149 ^{PV} HBR	+2 95% 95	-6.6	-4.0	-3.6	+6.5	+51	+95	+127	+167	+10	+1.8	-2.3	+81	+3.8	-3.4	-2.1	+1.5	-0.6	-0.69	+25	+0.88	+0.76	+0.78	\$95	\$247	
VTMK52 USA16295688 VTMH423	TE MANIA KALIBROOK K52 ^{PV} HBR	+140 84% 7	+8.9	+4.6	-2.9	+1.3	+52	+106	+128	+93	+29	+1.8	-6.6	+69	+1.8	+1.1	+2.2	-1.1	+5.8	+1.47	+14	+1.10	+1.06	+1.08	\$259	\$428	
VTMK138 USA16295688 VTMH17	TE MANIA KIRBY K138 ^{PV} HBR	+238 94% 1	+0.5	+6.7	-1.7	+4.3	+50	+89	+120	+91	+19	+2.5	-9.0	+66	+5.2	+1.8	+3.1	-1.9	+8.6	+1.20	+8	+0.82	+0.76	+0.98	\$265	\$424	
VTMM13 HIOH9 VTMK200	TE MANIA MAGNATE M13 ^{PV} HBR	+54 92% 60	-2.1	+7.8	-12.2	+4.3	+51	+91	+113	+79	+29	+2.3	-8.3	+59	+5.3	-1.9	-1.4	+0.6	+1.7	+0.28	+29	+1.02	+1.26	+1.20	\$229	\$363	
VTMN424 VTMJ89 VTMJ214	TE MANIA NEBO N424 ^{PV} HBR	+185 92% 2	+11.1	-1.9	-7.1	+3.9	+52	+102	+127	+104	+32	+4.5	-4.0	+56	+7.6	-1.1	-3.6	+0.4	+4.5	-0.01	+50	+0.74	+0.76	+1.02	\$211	\$363	
VTMN1387 VTMK138 VTML452	TE MANIA NEON N1387 ^{SV} HBR	+274 79% 1	-0.3	+3.8	-6.3	+3.6	+48	+89	+111	+89	+21	+1.8	-7.5	+50	+2.9	-0.5	-1.2	-2.0	+9.7	+0.46	+32	+0.78	+0.78	+1.06	\$232	\$376	
VTMN181 VTML135 VTML1251	TE MANIA NERO N181 ^{PV} HBR	+189 91% 1	-13.5	-4.7	-3.1	+5.4	+61	+107	+142	+114	+29	+5.2	-6.0	+74	+6.3	-4.5	-5.0	+0.3	+6.2	+0.18	+30	+0.84	+0.98	+1.22	\$211	\$332	
VTMP888 VTMK226 VTMH423	TE MANIA PESO P888 ^{PV} HBR	+24 82% 85	+9.4	+5.2	-5.9	+1.4	+56	+117	+143	+109	+28	+2.3	-6.3	+92	+2.8	-0.5	+0.7	+0.1	+1.8	+0.53	+35	+0.84	+1.04	+0.94	\$250	\$433	
VTMQ854 USA18229488 VTML1244	TE MANIA QUEBEC Q854 ^{SV} HBR	+98 69% 25	+8.5	+4.2	-2.6	+1.3	+50	+88	+116	+81	+26	+0.6	-4.1	+57	+6.0	+1.1	+2.2	-0.1	+3.5	+0.31	+33	+0.80	+0.92	+0.78	\$229	\$370	
DXTR725 USA18962396 DXTH647	TEXAS ICEMAN R725 ^{PV} HBR	+62 67% 54	+1.7	+2.5	-4.7	+3.6	+58	+103	+134	+108	+13	+2.6	-3.9	+80	+14.8	+1.8	+1.6	+0.8	+1.9	+0.30	+36	+1.18	+1.00	+0.72	\$244	\$400	
Breed Average EBVs		+68.	+2.2	+2.6	-4.8	+4.0	+50	+90	+117	+100	+17	+2.1	-4.7	+66	+6.3	+0.0	-0.3	+0.5	+2.2	+0.19	+20	+0.84	+0.97	+1.03	+197	+340	

Angus Australia - MSA Marbling Research Breeding Values

Date: July 31, 2023

Page: 15

Ident	Name																										
Sire Dam	Reg.	MSA MBL RBV	Calv-Ease		Birth		Growth			Maternal			Fert		Carcase					Feed	Temp	Structural		Selection Index			
			Dir	Dtrs	GL	BW	200	400	600	MCW	Milk	SS	DC	CW	EMA	Rib	P8	RBY	IMF	NFI-F	Doc	Claw	Angle	Leg	\$A	\$A-L	
DXTM100 USA15848590 DXTZ183	TEXAS MT KAPUTAR M100 ^{PV} HBR	+70 85% 46	+8.2	+8.2	-10.9	+4.2	+62	+109	+153	+145	+18	+3.7	-4.3	+91	+5.7	-3.0	-4.2	+0.7	+1.6	+0.06	+28	+0.96	+1.12	+1.00	\$211	\$407	
USA18704096 USA16933958 USA18048451	THOMAS EDISON 6764 ^{PV} HBR	+70 84% 47	-1.3	+7.6	-0.1	+4.3	+62	+103	+141	+131	+12	+0.4	-3.5	+85	+10.9	-5.5	-7.9	+1.6	+2.6	-0.11	+11	+0.86	+1.00	+0.92	\$215	\$373	
DBLL292 USA16295688 VSNF04	TOPBOS LEADING EDGE L292 ^{PV} HBR	+31 89% 80	+1.4	+6.3	-6.1	+7.0	+73	+131	+169	+158	+22	+1.5	-5.2	+88	+3.7	-2.4	-4.9	+0.3	+1.1	-0.01	+26	+0.98	+0.76	+0.78	\$232	\$430	
NZE17691009 NZE17691003Y167 NZE17691195Q263	TURIHUA CRUMP E5 ^{SV} HBR	+17 92% 89	-2.9	-1.7	-5.8	+3.6	+29	+57	+82	+95	+14	+1.0	-9.1	+15	-0.5	+4.3	+2.8	-0.1	+1.2	+0.29	+22	+0.66	+1.20	+1.20	\$118	\$242	
NXTL096 NXTH111 NXTJ078	TWYNAM L096 ^{SV} APR	+55 84% 60	+8.9	+9.6	-8.2	+2.7	+57	+111	+158	+133	+27	+3.5	-8.8	+106	+2.5	+0.8	+0.9	-0.7	+3.0	-0.21	+10	+0.64	+0.86	+0.90	\$254	\$464	
USA18066037 USA17262835 USA16924432	V A R LEGEND 5019 ^{SV} HBR	+80 85% 38	-1.4	+4.2	-6.8	+5.3	+69	+120	+145	+152	+11	+2.6	-4.7	+85	+10.0	-4.0	-6.1	+1.3	+2.1	-0.36	+17	+1.04	+0.66	+0.88	\$229	\$414	
NZE18954020 NZE21159016327 NZE18954118P105	WAITANGI R257 ^{PV} HBR	+163 62% 3	+1.4	-1.3	-7.2	+4.3	+55	+100	+135	+112	+27	+3.1	-5.9	+72	+9.9	-1.0	-2.2	+0.3	+4.9	+0.83	+23	+0.78	+0.72	+0.92	\$240	\$396	
BSCF73 USA15688392 BSCZ66	WAITARA PIO FEDERAL F73 ^{SV} HBR	+25 93% 84	+5.1	+5.7	-4.4	+1.6	+55	+103	+134	+90	+27	+2.5	-3.8	+90	+5.1	-0.5	-0.5	+0.3	+1.3	+0.33	+15	+1.40	+1.24	+0.94	\$219	\$367	
BSCP90 GTNM6 BSCJ2	WAITARA PRINCETON P90 ^{PV} HBR	+47 72% 67	-0.1	+3.0	-2.4	+4.5	+50	+95	+125	+79	+24	+2.2	-4.4	+77	+9.5	+0.1	+0.2	+0.0	+2.6	+0.28	+43	+0.60	+0.80	+1.02	\$216	\$343	
QKBP29 SMPG357 QKBM01	WARRAWEE PATROL P29 ^{PV} HBR	+34 79% 77	+10.4	+11.7	-13.5	+2.4	+55	+107	+144	+127	+22	+2.5	-6.9	+104	+8.7	+3.3	+1.8	+0.0	+1.8	+0.50	+27	+0.80	+1.26	+0.98	\$248	\$450	
NWPG188 USA15462648 NWPE295	WATTLETOP FRANKLIN G188 ^{SV} HBR	+16 92% 89	+4.6	+7.0	-4.6	+2.2	+65	+110	+141	+118	+25	+3.7	-3.2	+87	+1.2	-1.5	-1.8	-0.3	+0.8	-1.14	+33	+1.02	+0.94	+0.94	\$194	\$360	
CWDJ17 BNAD145 CWDJ14	WEATHERLY JAMES J17 ^{SV} HBR	+116 88% 15	-2.5	-3.8	-4.2	+6.5	+49	+84	+109	+109	+3	+1.7	-5.3	+65	+10.1	+1.6	+2.4	+1.1	+3.2	+0.08	+14	+0.86	+1.20	+1.00	\$215	\$351	
CWDM5 SMPG357 CWDJ15	WEATHERLY MOXY M5 ^{SV} HBR	+53 74% 61	+7.6	+8.0	-6.8	+3.2	+52	+91	+126	+111	+30	+2.4	-6.3	+86	+6.3	+3.2	+0.8	+0.1	+2.5	+0.27	+26	+0.96	+1.08	+0.96	\$223	\$396	
Breed Average EBVs		+68.	+2.2	+2.6	-4.8	+4.0	+50	+90	+117	+100	+17	+2.1	-4.7	+66	+6.3	+0.0	-0.3	+0.5	+2.2	+0.19	+20	+0.84	+0.97	+1.03	+197	+340	

For further information, please contact staff at Angus Australia:
P: 02 6773 4600 | E office@angusaustralia.com.au

www.angusaustralia.com.au



ANGUS
AUSTRALIA