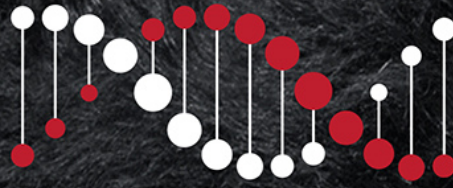


TACE



TransTasman Angus Cattle Evaluation

MSA Marbling

RESEARCH BREEDING VALUES

MID MARCH 2025

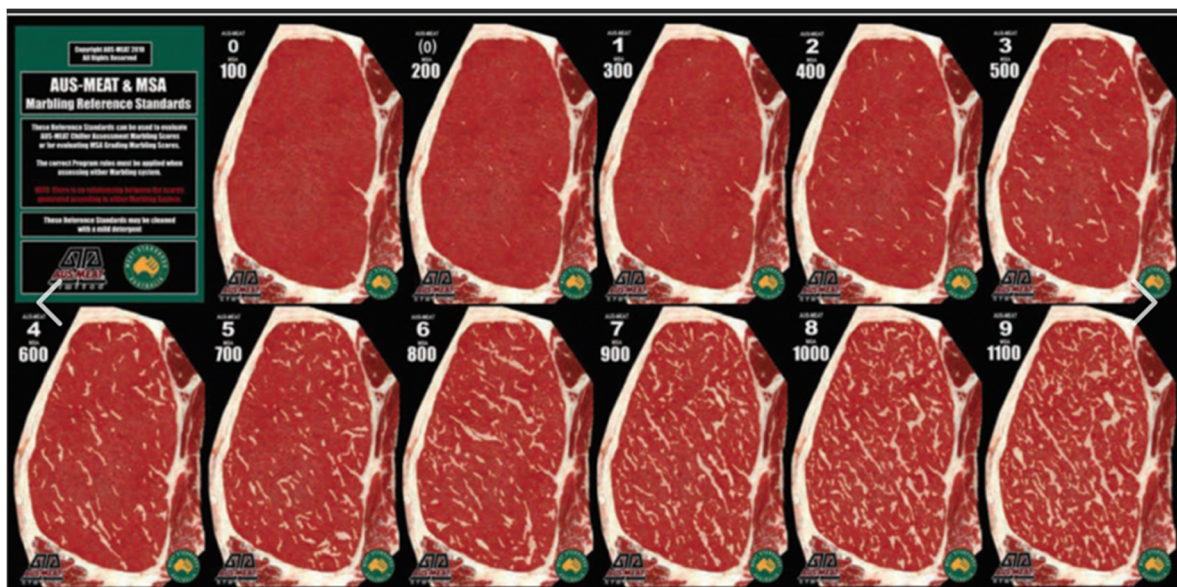
BACKGROUND

Angus Australia has partnered with the Animal Genetics and Breeding Unit (AGBU) and the Agricultural Business Research Institute (ABRI) to undertake research into the genetics Meat Standards Australia (MSA) Marbling Score in Australian Angus Cattle.

MSA Marbling Score, being the subjective visual assessment of intramuscular fat at the chilled carcass grading site, has been identified as a trait of importance, particularly as it is related to Angus carcass value and consumer eating experience. It is also the commercially recognised method for describing marbling in the national grading system, MSA.

As a result of this collaborative research, MSA Marbling Score RBVs are now routinely analyzed every two weeks in the TransTasman Angus Cattle Evaluation (TACE). To underpin this analysis, MSA marbling scores are utilised from both member collected data and from progeny in the Angus Sire Benchmarking Program. Angus animals, mostly steers, that are MSA graded between 300 and 1000 days of age at slaughter are included in the analysis.

MSA Marbling scores are collected using the industry standard 100 – 1100 scoring system (with increments of 10 score unit). A score of 100 indicates no/minimal marbling and a score of 1100 indicates abundant marbling. Along with the amount of marbling, the scores also take into account distribution and size of fleck (i.e. coarse or fine marbling).



Study of the Angus Australia data by AGBU has demonstrated that a significant portion of the differences in the MSA marbling score of individual animals can be attributed to genetics, having a high **heritability of 0.54**. The study also estimated the genetic correlation between MSA marbling score and a wide range of production traits included in the multi-trait analysis model utilized in TACE (from the BREEDPLAN program). As expected, the genetic correlations with carcass IMF, bull ultrasound scan IMF and heifer ultrasound scan IMF had the strongest relationship of 0.80, 0.35 and 0.35 respectively.

From this collaborative research it is now possible to generate breeding values for MSA Marbling Score and select animals for use within Angus breeding programs with desirable genetics for this trait. This is underpinned by a large and growing reference population of MSA Marbling Scores ($n > 10,000$ as of May 2023), coupled with genomic and pedigree data.

UNDERSTANDING THE RESEARCH BREEDING VALUES

MSA Marbling Research Breeding Values (RBVs) are provided in this publication for sires with (i) at least 50% accuracy for their MSA Marbling RBV, and (ii) one or more progeny born in the last two years.

MSA Marbling Score (MMS) RBVs are estimates of genetic differences between animals in MSA marbling score at the 12/13th rib grading site in a 400 kg steer carcass.

MMS RBVs are calculated from MSA marbling scores (taken by a trained/accredited carcass grader), pedigree, genomics and correlated traits (e.g. Carcass IMF, bull and heifer ultrasound scan IMF). MMS EBVs are expressed in MSA marbling score units.

Higher, more positive MMS RBVs indicate the animal is expected to produce progeny with higher marbling scores in a 400 kg steer carcass.

USING THE RESEARCH BREEDING VALUES IN SELECTION

The Research Breeding Values in this publication enable Angus breeders to select animals with desirable genetics for MSA marbling score, balanced with selection for other traits of importance within their breeding objective.

It is important to note that the Research Breeding Values are subject to greater potential change than EBVs routinely reported as part of the TransTasman Angus Cattle Evaluation (TACE) and should be used with caution in animal selection decisions.

Research Breeding Values may change as improvements are made to the analytical models that are used, and as additional performance information is collected.

ACKNOWLEDGEMENTS

Angus Australia gratefully acknowledges the contributions of Animal Genetics and Breeding Unit (AGBU) and the Agricultural Business Research Institute (ABRI), and in particular, Dr Gilbert Jeyaruban, Dr Steve Miller, Dr Natalie Connors, Dr Andrew Swan, Dr David Johnston and Dr Brad Crook, in the calculation of the Research Breeding Values that are included in this publication.

Angus Australia also acknowledges Meat and Livestock Australia (MLA) for the related R&D funding supplied to AGBU and Angus Australia for the ASBP. Also, for overseeing the MSA grading system, including the collection of MSA marbling scores in the ASBP, particularly through the grading by Janie Lau.

DISCLAIMER

The Research Breeding Values contained within this publication were calculated from data supplied to Angus Australia by members and/or third parties. Whilst every effort is made to ensure the accuracy of the data, Angus Australia, its officers and employees, assume no responsibility for the accuracy of the RBVs, nor the outcome (including consequential loss) of an action taken based on the information presented in this publication.

Angus Australia - MSA Marbling Research Breeding Values

Date: March 18, 2025

Page: 1

Ident	Name																										
Sire Dam	Reg.	MSA MBL RBV	Calv-Ease		Birth		Growth			Maternal			Fert			Carcase				Feed	Temp	Structural		Selection Index			
			Dir	Dtrs	GL	BW	200	400	600	MCW	Milk	SS	DC	CW	EMA	Rib	P8	RBY	IMF	NFI-F	Doc	Claw	Angle	Leg	\$A	\$A-L	
NXOL172 NXOF43 NXOJ432	AJC L172 ^{SV} APR	+64 90% 60	+6.8 77% 16	+8.1 63% 8	-6.1 94% 26	+3.0 96% 29	+58 94% 22	+100 94% 32	+137 94% 19	+127 88% 17	+14 90% 72	+2.1 84% 52	-5.1 55% 42	+72 91% 42	+6.6 89% 48	-0.5 84% 62	+0.4 89% 38	+0.3 82% 53	+1.1 91% 81	-0.95 83% 1	+22 85% 47	+1.46 85% 99	+1.30 85% 98	+1.18 81% 89	\$214 43	\$394 21	
ARRR11 CAN2043806 QMUN24	ALKIRA RENEGADE R11 ^{PV} HBR	+59 73% 63	+7.4 67% 12	+6.6 57% 18	-4.2 96% 55	+2.2 94% 16	+44 92% 82	+94 92% 48	+128 90% 35	+99 85% 57	+26 77% 6	+2.3 86% 44	-7.5 45% 6	+61 78% 72	+9.1 77% 22	+2.2 78% 11	+1.8 78% 18	+0.0 71% 70	+2.1 79% 57	+0.24 63% 51	+0 87% 99	+0.76 67% 33	+0.72 67% 6	+0.90 59% 16	\$225 31	\$393 22	
DGJG10 VTMB1 DGJZ15	ALLOURA GET CRACKING G10 ^{SV} HBR	+200 93% 2	+8.1 95% 8	+7.7 86% 10	-2.9 99% 75	+2.6 99% 22	+43 98% 85	+74 98% 93	+85 98% 98	+84 98% 79	+12 97% 85	-0.4 97% 99	-7.9 77% 4	+45 96% 96	+14.3 94% 2	+1.5 94% 20	+0.5 95% 37	+0.8 91% 24	+5.8 93% 2	+0.47 89% 75	+5 97% 96	+0.46 96% 2	+0.98 96% 54	+0.92 94% 20	\$264 5	\$416 10	
DGJL94 USA15832750 DGJH24	ALLOURA LOCK STOCK & HBR	+72 86% 53	+5.8 79% 23	+1.4 72% 71	-4.2 93% 55	+2.8 96% 26	+57 94% 27	+94 94% 49	+124 94% 43	+121 91% 22	+11 87% 89	+1.1 88% 85	-3.9 54% 71	+65 89% 60	+0.8 84% 96	+2.2 81% 11	-1.3 86% 68	+0.2 77% 59	+1.9 87% 62	-0.38 78% 5	+25 93% 35	+0.84 84% 50	+0.86 82% 25	+0.92 77% 20	\$184 75	\$343 62	
DGJQ30 WWEL3 DGJK117	ALLOURA QUINELLA Q30 ^{SV} HBR	+286 89% 1	+2.0 73% 58	+2.0 66% 66	+0.5 94% 98	+2.9 93% 27	+53 91% 46	+96 91% 41	+117 92% 58	+120 86% 24	+14 79% 76	+3.4 83% 14	-7.3 61% 8	+64 89% 65	+14.2 88% 2	+0.1 87% 48	+0.5 88% 37	+0.8 79% 24	+7.4 90% 1	+0.44 82% 72	+16 88% 72	+0.90 85% 62	+1.00 86% 59	+1.16 81% 86	\$283 1	\$460 2	
CGKR232 NORN542 CGKM152	ALPINE RONALDO R232 ^{PV} HBR	+101 75% 33	+8.0 75% 9	+7.5 62% 11	-5.7 96% 32	+1.7 94% 11	+53 92% 46	+98 92% 36	+136 88% 20	+115 85% 31	+26 78% 6	+3.0 85% 22	-5.1 51% 42	+80 79% 21	+11.4 77% 8	-3.5 78% 98	-3.3 78% 91	+0.7 71% 29	+3.4 79% 27	+0.21 67% 48	+25 88% 33	+0.60 78% 10	+0.68 78% 4	+0.98 75% 36	\$228 28	\$398 18	
WJMM117 WJMF96 WJMG78	ARDCAIRNIE M117 ^{SV} HBR	+33 83% 81	+6.2 77% 20	+0.0 66% 81	-5.7 93% 32	+3.7 96% 45	+55 95% 35	+98 94% 37	+129 94% 32	+141 90% 7	+3 87% 99	+3.1 90% 19	-5.3 57% 38	+75 86% 34	+10.2 85% 14	-1.0 85% 73	-1.8 86% 76	+1.5 78% 5	+0.5 87% 91	+0.12 76% 38	+12 83% 84	+0.84 81% 50	+0.98 81% 54	+0.94 77% 25	\$198 63	\$379 31	
NAQA241 USA2928 NAQW38	ARDROSSAN EQUATOR A241 ^{PV} HBR	+33 98% 81	-1.3 99% 81	+3.0 98% 56	-4.4 99% 52	+4.1 99% 54	+49 99% 61	+91 99% 57	+121 99% 49	+108 99% 41	+20 99% 29	+3.2 99% 17	-8.9 95% 2	+87 99% 9	+8.2 98% 30	-2.0 98% 89	-0.3 98% 51	+1.2 98% 10	+1.6 98% 69	+0.65 96% 87	+25 99% 34	+0.48 99% 3	+0.84 99% 22	+1.00 99% 43	\$230 26	\$388 25	
NAQN329 NAQH318 NAQK30	ARDROSSAN HOLBROOK N329 HBR	+55 89% 66	-7.4 72% 97	+0.3 67% 79	-3.0 96% 74	+2.7 95% 24	+47 95% 73	+85 94% 74	+110 90% 72	+75 88% 88	+24 91% 9	+2.4 86% 4	-7.8 59% 5	+71 91% 43	+5.4 89% 63	+2.4 89% 9	+2.3 90% 13	-0.9 82% 96	+3.9 91% 18	+1.10 83% 99	+14 90% 79	+0.84 81% 50	+1.02 87% 64	+0.92 83% 20	\$205 54	\$320 77	
NAQH255 NORE11 NAQD17	ARDROSSAN HONOUR H255 ^{PV} HBR	+48 95% 72	-2.1 96% 84	-1.0 89% 86	-2.6 99% 79	+4.6 99% 66	+43 98% 85	+75 98% 93	+97 98% 91	+93 98% 65	+13 98% 82	+2.2 98% 48	-6.1 85% 22	+61 97% 73	+5.7 96% 59	+1.0 96% 28	-1.4 96% 70	+0.6 95% 35	+2.4 96% 49	+1.00 92% 98	+9 98% 91	+0.44 97% 2	+1.00 97% 59	+1.24 96% 96	\$169 86	\$293 88	
NAQQ67 NMMN334 NAQL96	ARDROSSAN NECTAR Q67 ^{PV} HBR	+53 87% 68	+6.0 79% 22	+6.6 66% 18	-9.3 93% 3	+3.4 95% 38	+54 94% 37	+98 93% 35	+129 94% 31	+131 88% 13	+12 83% 85	+2.9 82% 24	-6.7 57% 14	+53 88% 88	+5.0 88% 68	+1.7 87% 17	-0.3 88% 51	-0.4 79% 86	+2.7 89% 42	+0.09 80% 35	+35 91% 10	+0.36 89% 1	+0.80 90% 15	+1.02 83% 49	\$205 55	\$392 22	
QQFH147 VTME343 NMMF123	ASCOT HALLMARK H147 ^{PV} HBR	+118 94% 22	-3.1 96% 88	+1.7 88% 69	-5.0 99% 42	+7.1 99% 97	+60 98% 16	+110 98% 11	+152 98% 5	+137 98% 9	+15 98% 71	+3.8 98% 8	-6.1 80% 22	+80 96% 20	-1.5 95% 99	+0.7 96% 34	-0.3 96% 51	-0.8 94% 95	+3.3 95% 29	+0.37 90% 65	+18 97% 62	+0.48 95% 3	+0.88 95% 30	+1.02 93% 49	\$199 61	\$368 40	
HIOE7 VTMB219 BVBV32	AYRVALE BARTEL E7 ^{PV} HBR	+133 98% 15	+8.8 99% 5	+9.3 97% 3	-4.4 99% 52	+1.8 99% 12	+49 99% 62	+86 99% 71	+113 99% 68	+76 99% 87	+26 99% 6	+2.5 99% 37	-9.1 94% 1	+63 98% 66	+8.3 98% 29	-0.4 98% 60	+0.6 98% 35	+1.1 98% 13	+3.6 98% 23	+0.26 96% 53	+4 99% 97	+1.04 99% 85	+1.00 99% 59	+1.14 99% 82	\$287 1	\$444 3	
Breed Average EBVs		+77.	+2.3	+3.1	-4.6	+3.9	+52	+93	+121	+103	+17	+2.2	-4.8	+69	+6.6	+0.1	-0.2	+0.4	+2.5	+0.24	+21	+0.84	+0.96	+1.02	+206	+353	

Angus Australia - MSA Marbling Research Breeding Values

Date: March 18, 2025

Page: 2

Ident	Name																										
Sire Dam	Reg.	MSA MBL RBV	Calv-Ease		Birth		Growth			Maternal			Fert		Carcase					Feed	Temp	Structural		Selection Index			
			Dir	Dtrs	GL	BW	200	400	600	MCW	Milk	SS	DC	CW	EMA	Rib	P8	RBY	IMF	NFI-F	Doc	Claw	Angle	Leg	\$A	\$A-L	
NBB21S86 NMMMP15 NBBQ25	BALD BLAIR STIRLING S86 ^{PV} HBR	+106 73% 29	+6.4	+9.3	-4.2	+2.5	+64	+108	+143	+117	+20	+3.8	-5.0	+92	+5.8	-2.3	-3.6	+0.1	+3.7	-0.32	+4	+0.74	+0.70	+1.10	\$244	\$421	
VONN462 VONJ507 VONK224	BANQUET NUTTELLA N462 ^{PV} HBR	+14 86% 91	-2.6	+2.3	-4.3	+7.1	+56	+104	+142	+110	+24	+3.4	-4.8	+69	+3.7	+0.0	-1.5	+0.1	+1.2	-0.29	+56	+0.54	+0.92	+0.80	\$189	\$332	
NBNN239 USA16956101 NBNH215	BEN NEVIS NEWSFLASH N239 ^{PV} HBR	+35 90% 80	+0.0	+3.2	-4.3	+4.8	+58	+98	+133	+116	+18	+0.8	-2.7	+84	+5.3	-2.2	+0.0	+0.4	+1.4	+0.25	+10	+1.00	+0.94	+0.88	\$191	\$334	
NBNP122 USA17960722 NBNM115	BEN NEVIS PRIME P122 ^{PV} HBR	+168 77% 5	+4.5	+6.9	+0.1	+2.4	+57	+86	+112	+77	+12	+3.1	-3.8	+60	+5.2	+1.1	+1.9	-0.6	+4.9	+0.30	+25	+0.70	+0.74	+0.96	\$235	\$370	
NBNR138 USA17960722 NBNP153	BEN NEVIS RONAN R138 ^{PV} HBR	+33 75% 81	+4.7	+6.3	-8.3	+3.4	+72	+120	+148	+142	+12	+2.2	-4.7	+81	+8.8	-1.2	-2.0	+0.6	+1.3	-0.01	+29	+0.76	+0.86	+0.92	\$250	\$444	
NGXQ227 VLYM518 NGXN221	BONGONGO BE QUICK Q227 ^{PV} HBR	+192 89% 2	+4.9	+2.6	-4.4	+2.9	+50	+91	+114	+65	+23	+3.8	-6.5	+66	+11.5	+0.6	+2.8	+0.1	+5.8	+1.14	+18	+0.64	+1.06	+1.14	\$284	\$423	
NGXP212 NORL508 NGXL13	BONGONGO P212 ^{PV} HBR	+167 88% 5	+6.1	+9.5	-7.0	+2.2	+47	+87	+104	+82	+23	+3.8	-9.4	+55	+3.9	+3.3	+5.7	-1.0	+4.8	+0.93	+9	+0.82	+0.84	+0.96	\$259	\$426	
NUIF32 NGMC196 NUID96	BONNY BROOKE FALCO F32 ^{SV} HBR	+34 82% 81	-4.2	-10.5	-0.1	+6.1	+54	+84	+109	+93	+18	-0.4	-2.1	+65	-2.2	+2.2	+1.4	-1.2	+2.1	-0.37	+20	+1.00	+0.92	+1.08	\$128	\$223	
HCAG013 VTMA217 VTMZ618	BOONAROO GRAVITY G013 ^{PV} HBR	+118 91% 22	+5.1	+3.8	-5.3	+3.7	+51	+88	+115	+103	+23	+3.9	-5.5	+57	+5.4	-2.8	-3.3	+1.2	+3.0	-0.76	+22	+0.50	+0.90	+1.06	\$212	\$364	
HCAN20 VTMK338 HCAL54	BOONAROO KASBAH N20 ^{SV} HBR	+72 89% 53	+5.2	+2.5	-5.5	+5.5	+48	+88	+114	+108	+14	+3.6	-6.4	+55	+5.6	-0.6	-1.6	+0.9	+2.1	+0.74	+17	+0.86	+1.04	+1.06	\$201	\$360	
NGMN418 WWEL3 NGML471	BOOROOMOOKA JACKPOT N418 HBR	+86 86% 42	+2.6	+7.1	-8.8	+5.3	+63	+112	+138	+134	+5	+3.5	-7.3	+80	+8.6	-0.6	-0.2	+0.7	+2.7	+0.27	+28	+1.32	+1.06	+1.04	\$268	\$462	
NGMN213 NGML201 NGML45	BOOROOMOOKA NORMANDY HBR	+118 87% 22	+11.7	+11.2	-7.6	+1.2	+41	+73	+100	+73	+23	+3.3	-9.1	+50	+3.9	-2.8	-3.1	+0.9	+3.3	+0.93	+32	+0.74	+0.58	+1.02	\$228	\$377	
NGMP96 WWEL3 NGMM566	BOOROOMOOKA PARAGON P96 HBR	+76 91% 50	-4.4	+1.8	-7.8	+3.6	+63	+119	+161	+130	+30	+3.6	-8.4	+110	+13.2	-2.7	-1.3	+1.5	+2.4	+0.88	+33	+0.84	+0.98	+1.10	\$288	\$466	
Breed Average EBVs		+77.	+2.3	+3.1	-4.6	+3.9	+52	+93	+121	+103	+17	+2.2	-4.8	+69	+6.6	+0.1	-0.2	+0.4	+2.5	+0.24	+21	+0.84	+0.96	+1.02	+206	+353	

Angus Australia - MSA Marbling Research Breeding Values

Date: March 18, 2025

Page: 3

Ident	Name																										
Sire Dam	Reg.	MSA MBL RBV	Calv-Ease		Birth		Growth			Maternal			Fert			Carcase					Feed	Temp	Structural		Selection Index		
			Dir	Dtrs	GL	BW	200	400	600	MCW	Milk	SS	DC	CW	EMA	Rib	P8	RBY	IMF	NFI-F	Doc	Claw	Angle	Leg	\$A	\$A-L	
NGMP22 NGMK9 NGMK640	BOOROOMOOKA PRESIDENT HBR	+72 90% 53	-0.8 79% 78	+3.9 67% 46	-6.3 97% 24	+5.0 96% 74	+58 95% 22	+108 95% 15	+143 96% 11	+128 91% 16	+22 83% 20	+3.1 91% 19	-6.2 59% 20	+78 91% 25	+5.5 89% 62	+0.2 89% 46	+0.7 90% 33	+0.1 80% 65	+2.7 91% 42	+0.59 84% 84	+18 94% 62	+0.34 88% 1	+0.64 89% 2	+0.88 83% 13	\$229 27	\$401 17	
NGMR49 USA17960722 NGMP361	BOOROOMOOKA RAUDONIKIS HBR	+32 75% 82	+4.9 72% 31	+5.2 65% 32	-5.5 92% 35	+3.8 93% 47	+62 91% 11	+104 91% 22	+128 89% 33	+94 85% 64	+19 78% 34	+3.7 86% 9	-2.7 54% 90	+73 79% 38	+12.2 77% 6	-0.5 78% 62	-2.0 78% 79	+1.2 72% 10	+1.0 79% 83	+0.09 68% 35	+29 89% 21	+1.02 79% 82	+0.82 79% 18	+0.84 74% 8	\$233 22	\$380 31	
BOWK2 VTME343 NAQZ31	BOWMAN AUSTRALIA K2 PV HBR	+67 88% 57	+7.4 80% 12	+2.4 76% 62	-6.5 94% 21	+3.5 91% 40	+49 91% 64	+98 91% 35	+124 91% 43	+96 88% 61	+22 86% 16	+4.9 85% 2	-7.4 69% 7	+69 89% 49	+8.1 88% 31	+0.0 88% 50	-1.6 88% 73	+0.9 83% 20	+1.5 90% 72	-0.59 83% 2	+10 88% 88	+0.84 84% 50	+1.02 85% 64	+0.94 81% 25	\$226 30	\$388 25	
SRKK306 NJWG279 TFAD58	BOWMONT KING K306 PV HBR	+155 92% 8	-1.2 75% 80	-8.9 73% 99	-4.6 97% 49	+4.6 98% 66	+50 97% 60	+78 97% 88	+103 97% 85	+89 95% 71	+2 95% 99	-0.3 96% 99	-4.4 70% 60	+64 94% 63	+14.8 93% 2	-0.5 93% 62	-1.9 93% 77	+1.5 91% 5	+4.8 94% 7	+0.50 87% 77	+26 96% 32	+0.54 93% 5	+0.92 93% 39	+0.68 91% 1	\$232 24	\$346 59	
BON21S004 USA19266718 BONQ008	BRIDGEWATER HOMETOWN HBR	+70 74% 55	+10.2 70% 2	+9.0 62% 4	-9.4 92% 3	+1.4 89% 8	+60 88% 16	+99 88% 33	+129 86% 31	+100 83% 54	+16 78% 56	+3.0 81% 22	-8.1 48% 3	+87 77% 10	+9.3 76% 20	+2.1 77% 12	+0.6 70% 35	+0.0 78% 70	+2.6 74% 44	+0.38 65% 66	+39 85% 5	+1.38 71% 99	+1.06 71% 72	+0.86 68% 10	\$270 3	\$447 3	
BONQ007 QMUM13 HIOL28	BRIDGEWATER QUANTUM Q007 HBR	+46 90% 73	-3.2 70% 88	-1.7 64% 89	-5.4 93% 36	+5.6 93% 84	+63 91% 9	+100 91% 32	+131 92% 28	+102 87% 50	+22 80% 18	+0.5 86% 94	-5.8 58% 27	+86 90% 11	+6.7 89% 47	+0.0 88% 50	-1.7 89% 75	+0.1 89% 65	+2.2 79% 54	+0.14 84% 40	+21 86% 48	+0.98 83% 77	+0.80 84% 15	+1.04 80% 55	\$226 30	\$359 48	
QBUG49 VTMB1 QBUE5	BURENDA GEIGER COUNTER HBR	+115 90% 23	+8.3 86% 7	+8.7 76% 5	-6.7 97% 19	+2.9 97% 27	+41 96% 90	+80 96% 85	+106 95% 81	+91 94% 69	+18 93% 47	+2.1 94% 52	-8.8 69% 2	+65 92% 62	+4.1 91% 78	+0.4 91% 41	-1.4 91% 70	+0.4 86% 47	+3.3 90% 29	+0.14 85% 40	+27 95% 29	+1.02 85% 82	+1.20 85% 92	+0.96 82% 31	\$218 38	\$379 32	
WLHD19 USA13058662 USA14311946	CHERYLTON STEWIE D19 PV HBR	+139 94% 12	+3.0 95% 49	+2.4 89% 62	-4.7 98% 47	+3.2 98% 33	+45 98% 78	+90 98% 61	+111 98% 72	+95 97% 62	+20 98% 31	+2.2 98% 48	-7.2 77% 9	+57 96% 82	+4.6 95% 73	-1.7 95% 85	+1.1 95% 27	-0.2 93% 79	+4.1 95% 15	+0.39 89% 67	+15 96% 74	+1.02 95% 82	+1.00 95% 59	+1.04 92% 55	\$221 35	\$373 36	
GTNM6 VTMF734 VSNF15	CHILTERN PARK MOE M6 PV HBR	+16 92% 90	+5.4 91% 27	+3.3 84% 53	-1.3 99% 91	+3.1 99% 31	+51 99% 54	+99 99% 33	+135 99% 22	+81 98% 82	+31 97% 1	+1.4 99% 77	-6.6 75% 15	+82 96% 16	+6.4 94% 51	-0.8 94% 69	+0.5 94% 37	+0.2 91% 59	+1.8 94% 64	+0.28 87% 56	+38 99% 5	+0.72 99% 25	+1.04 99% 68	+1.10 98% 73	\$243 15	\$389 24	
GTNP9 HKFJ5 GTNK26	CHILTERN PARK PICASSO P9 PV HBR	+102 86% 32	+8.4 83% 7	+8.9 70% 4	-3.4 98% 68	+1.1 98% 6	+54 97% 39	+100 97% 32	+128 96% 34	+91 92% 69	+24 87% 10	+3.3 95% 15	-8.1 63% 3	+89 89% 8	+6.4 87% 51	-0.1 87% 53	+1.1 88% 27	-0.6 81% 92	+4.1 89% 15	+0.68 78% 89	+27 95% 27	+0.64 93% 14	+0.76 93% 10	+0.84 88% 8	\$264 5	\$435 4	
GTNQ322 USA18636106 GTNL198	CHILTERN PARK QUADRANT HBR	+114 89% 24	+6.7 80% 16	+4.4 70% 41	-2.3 97% 82	+3.4 97% 38	+62 93% 12	+115 96% 6	+144 94% 10	+108 89% 42	+20 80% 26	+4.3 85% 4	-6.2 58% 20	+92 90% 5	+13.0 88% 4	-1.7 88% 85	-1.2 89% 67	+0.7 79% 29	+4.0 90% 16	+0.90 82% 96	+5 87% 96	+1.06 85% 87	+1.12 85% 83	+1.00 81% 43	\$290 1	\$470 1	
QMUM13 USA16295688 QMUG1	CLUNES CROSSING DUSTY M13 HBR	+61 93% 62	+1.6 85% 62	+5.7 81% 27	-6.7 99% 19	+5.3 99% 79	+63 98% 9	+100 98% 31	+117 98% 58	+62 98% 95	+17 98% 53	+1.0 98% 87	-7.5 78% 6	+70 96% 46	+12.9 95% 4	-2.5 95% 93	-3.4 95% 92	+1.0 93% 16	+2.1 95% 57	+0.28 88% 56	+9 98% 90	+0.86 98% 54	+0.84 98% 22	+1.00 96% 43	\$294 1	\$426 6	
NBHK330 NJWG279 NBHH381	CLUNIE RANGE KALUHA K330 PV HBR	+96 91% 35	-2.5 72% 86	-13.2 68% 99	-4.9 97% 44	+5.6 97% 84	+55 96% 36	+96 96% 43	+126 96% 37	+100 93% 54	+16 90% 60	+1.6 96% 70	-7.3 67% 8	+93 93% 5	+9.8 91% 16	+0.2 91% 46	-1.2 92% 67	+1.2 90% 10	+3.2 93% 31	+0.34 86% 62	+5 94% 96	+0.70 88% 22	+0.92 88% 39	+1.12 85% 78	\$246 13	\$377 34	
Breed Average EBVs		+77.	+2.3	+3.1	-4.6	+3.9	+52	+93	+121	+103	+17	+2.2	-4.8	+69	+6.6	+0.1	-0.2	+0.4	+2.5	+0.24	+21	+0.84	+0.96	+1.02	+206	+353	

Angus Australia - MSA Marbling Research Breeding Values

Date: March 18, 2025

Page: 4

Ident	Name																										
Sire Dam	Reg.	MSA MBL RBV	Calv-Ease		Birth		Growth			Maternal			Fert		Carcase					Feed	Temp	Structural		Selection Index			
			Dir	Dtrs	GL	BW	200	400	600	MCW	Milk	SS	DC	CW	EMA	Rib	P8	RBY	IMF	NFI-F	Doc	Claw	Angle	Leg	\$A	\$A-L	
NBHL348 NZE14647008839 AHWJ81	CLUNIE RANGE LEGEND L348 ^{PV} HBR	+81 92% 47	-6.0	+4.5	-7.8	+5.8	+57	+102	+124	+153	+2	+2.8	-6.8	+61	+0.1	+3.8	+0.9	-0.8	+2.5	+0.15	+24	+0.50	+0.80	+1.22	\$165	\$342	
NBHP392 USA17960722 NBHM516	CLUNIE RANGE PLANTATION HBR	+129 88% 16	+4.9	+3.5	-5.1	+4.4	+68	+117	+145	+110	+22	+5.4	-4.3	+72	-1.2	-0.5	-1.6	-1.5	+4.0	+0.18	+24	+0.76	+0.92	+0.82	\$221	\$388	
WDCH249 USA14885809 WDCE9	COONAMBLE HECTOR H249 ^{SV} HBR	+5 94% 94	+1.5	+1.0	-8.3	+4.6	+45	+80	+99	+93	+5	+1.3	-4.6	+45	+9.2	+4.2	+4.5	+0.6	+0.2	-0.45	+40	+0.40	+0.48	+0.80	\$183	\$316	
WDCK314 NAQA241 WDCD94	COONAMBLE KEVIN K314 ^{PV} HBR	-1 89% 95	+0.6	+4.5	-1.9	+4.6	+51	+101	+134	+111	+25	+4.6	-7.2	+84	+7.2	+0.0	+0.6	+0.2	+1.5	+0.61	+41	+0.50	+1.12	+1.20	\$214	\$379	
USA19611994 USA18467508 USA18974126	DB ICONIC G95 ^{PV} HBR	+131 90% 15	+3.8	+7.6	-3.2	+3.0	+67	+123	+151	+143	+15	+3.0	-4.4	+88	+6.2	+0.2	+0.6	-0.7	+4.2	+0.27	+42	+1.16	+0.96	+0.80	\$247	\$444	
NJS21S15 USA18636106 QHEJ100	DEVANAH SATURN S15 ^{PV} HBR	+57 74% 64	+6.2	+2.0	-7.4	+3.6	+64	+109	+142	+102	+26	+4.3	-7.2	+85	+8.6	-1.0	-2.4	+0.3	+2.2	+0.47	+19	+0.84	+0.94	+0.86	\$262	\$430	
WKGQ202 WKGN129 WKGL21	DIAMOND ONE ALL IN Q202 ^{SV} HBR	-4 70% 96	-7.8	-8.5	-5.6	+8.1	+73	+125	+169	+153	+23	+2.8	-5.2	+99	+10.1	-5.9	-5.9	+1.8	-0.3	-0.79	+34	+0.94	+0.62	+0.86	\$216	\$376	
NGCM028 QHEJ134 NGCK204	DULVERTON MEDAGLIA M028 ^{PV} HBR	+73 86% 52	-10.0	-3.3	-4.4	+7.4	+71	+119	+157	+155	+11	+1.2	-4.3	+83	+5.9	-1.0	-3.7	+0.4	+2.3	-0.79	+18	+1.14	+1.12	+1.10	\$200	\$357	
CYIR18 QMUM13 CYIM611	EBONY BEEF BILLIE RAY R18 ^{PV} APR	+50 77% 70	+3.6	+8.2	-3.8	+5.2	+67	+107	+129	+72	+24	+2.7	-6.0	+82	+12.3	-2.1	-1.4	+0.8	+1.9	+0.25	-3	+1.04	+0.86	+1.14	\$295	\$439	
USA16198796 USA14686137 USA15452880	EF COMPLEMENT 8088 ^{PV} HBR	+42 97% 75	+4.5	+6.9	-4.6	+2.9	+53	+98	+130	+100	+21	+1.5	-7.3	+76	+7.6	+1.2	+0.7	+0.8	+1.6	+0.57	+20	+0.92	+1.24	+1.16	\$253	\$418	
WWEL3 HIOG18 WWEJ8	ESSLEMONT LOTTO L3 ^{PV} HBR	+137 95% 13	-5.6	-1.2	-5.4	+4.6	+60	+110	+140	+134	+15	+3.6	-9.9	+89	+14.8	-0.4	+0.7	+1.5	+3.8	+0.38	+14	+1.14	+1.00	+1.14	\$297	\$478	
WWEQ24 WWEN12 WWEN7	ESSLEMONT QUOKKA Q24 ^{PV} HBR	+60 89% 62	+5.7	+1.6	-4.8	+1.6	+42	+83	+94	+48	+19	+3.8	-7.3	+63	+16.8	+1.4	+0.2	+2.2	+2.2	+1.13	+29	+0.76	+0.84	+0.94	\$275	\$402	
WWE21S6 NGMN418 WWEN7	ESSLEMONT SEAN S6 ^{PV} HBR	+113 77% 25	+5.6	+7.4	-5.9	+2.8	+57	+101	+115	+90	+15	+4.4	-6.1	+77	+17.0	+2.4	+0.5	+1.2	+4.0	+1.08	+26	+1.06	+1.18	+1.10	\$292	\$458	
Breed Average EBVs		+77.	+2.3	+3.1	-4.6	+3.9	+52	+93	+121	+103	+17	+2.2	-4.8	+69	+6.6	+0.1	-0.2	+0.4	+2.5	+0.24	+21	+0.84	+0.96	+1.02	+206	+353	

Angus Australia - MSA Marbling Research Breeding Values

Date: March 18, 2025

Page: 5

Ident	Name																										
Sire Dam	Reg.	MSA MBL RBV	Calv-Ease		Birth		Growth			Maternal			Fert		Carcase					Feed	Temp	Structural		Selection Index			
			Dir	Dtrs	GL	BW	200	400	600	MCW	Milk	SS	DC	CW	EMA	Rib	P8	RBY	IMF	NFI-F	Doc	Claw	Angle	Leg	\$A	\$A-L	
USA18217198 USA17354178 USA16934264	G A R ASHLAND ^{PV} HBR	+85 94% 43	+2.8 97% 51	+3.9 88% 46	-6.0 99% 28	+3.2 99% 33	+67 99% 4	+115 99% 6	+146 99% 9	+121 98% 22	+16 98% 64	+1.4 99% 77	-3.7 78% 75	+88 97% 8	+12.5 96% 5	-2.5 96% 93	-1.8 96% 76	+1.1 94% 13	+2.7 96% 42	+0.07 89% 33	+11 99% 87	+1.22 99% 98	+1.12 99% 83	+0.86 98% 10	\$268 4	\$437 4	
USA16295688 USA13009379 USA15129456	G A R PROPHET ^{SV} HBR	+124 97% 19	+3.7 98% 43	+6.4 94% 20	-0.7 99% 94	+3.7 99% 45	+67 99% 4	+108 99% 15	+133 99% 24	+87 99% 75	+23 99% 13	+0.7 99% 92	-5.1 90% 42	+71 98% 42	+4.1 97% 78	-0.6 98% 64	-1.6 98% 73	-0.8 97% 95	+4.8 97% 7	+0.79 94% 93	+26 99% 29	+1.02 99% 82	+0.80 99% 15	+0.92 98% 20	\$267 4	\$415 10	
USA17328461 USA16205036 USA16431932	G A R SURE FIRE ^{SV} HBR	+135 95% 14	+6.4 96% 18	+2.7 87% 59	-3.0 99% 74	+2.3 99% 18	+50 98% 61	+90 98% 62	+112 98% 69	+85 97% 77	+20 98% 27	+4.1 98% 5	-7.7 81% 5	+64 97% 66	+8.0 96% 32	-0.2 96% 55	-0.5 96% 54	+0.9 95% 20	+3.4 96% 27	-0.12 90% 16	+26 96% 31	+1.18 99% 96	+0.92 99% 39	+0.62 93% 1	\$254 8	\$408 13	
USA18690054 USA17965471 USA18054344	GB FIREBALL 672 ^{PV} HBR	+172 92% 4	+2.2 95% 56	+6.8 85% 17	-4.8 99% 46	+2.6 99% 22	+62 99% 11	+99 99% 33	+132 99% 26	+122 98% 21	+17 97% 55	+2.7 98% 30	-8.0 69% 4	+81 95% 19	+14.4 94% 2	-2.5 94% 93	-4.1 94% 96	+0.9 91% 20	+5.5 94% 3	+0.60 86% 84	+12 98% 83	+1.08 99% 89	+0.94 99% 44	+0.82 98% 6	\$286 1	\$466 1	
QBGH221 BNAD145 QBGD80	GLENOCH HINMAN H221 ^{SV} HBR	+152 90% 8	+6.4 85% 18	-2.8 76% 93	-3.0 97% 74	+3.0 97% 29	+53 96% 42	+94 96% 48	+126 96% 38	+116 92% 29	+20 94% 31	+0.9 95% 89	-3.3 70% 82	+86 92% 11	+7.3 91% 90	-2.0 91% 89	-4.9 92% 98	+0.8 88% 24	+5.2 92% 5	-0.32 85% 7	+11 86% 86	+0.84 89% 50	+0.78 89% 12	+1.04 85% 55	\$209 50	\$357 50	
DKKM41 NORH708 DKKJ51	HARDHAT H708 MAIMURU J51 APR	+183 90% 3	-1.3 71% 81	+2.6 63% 60	-1.6 95% 89	+2.3 94% 18	+43 92% 86	+92 91% 56	+118 91% 57	+97 87% 59	+11 82% 89	+1.3 86% 80	-3.1 65% 85	+63 89% 68	+1.5 89% 94	+0.8 88% 32	-1.9 89% 77	-0.6 89% 92	+6.3 81% 1	+0.04 91% 30	+24 88% 39	+1.08 89% 89	+1.04 90% 68	+1.12 86% 78	\$181 78	\$313 81	
DKKN43 NORK522 NKLF143	HARDHAT K522 NEBRASKA HBR	+14 88% 91	+7.9 79% 9	+6.5 69% 19	-9.6 94% 3	+2.2 95% 16	+59 93% 20	+100 93% 32	+136 91% 20	+131 88% 13	+14 85% 75	+5.1 89% 1	-7.4 59% 7	+72 89% 42	+2.8 87% 88	+0.6 87% 36	+0.2 88% 42	-0.4 79% 86	+0.4 90% 92	+0.17 82% 43	+13 92% 80	+0.80 91% 41	+0.80 91% 15	+0.90 86% 16	\$197 64	\$387 26	
NHZP434 NHZJ140 NHZL527	HAZELDEAN P434 ^{SV} APR	+41 89% 77	+8.2 78% 8	+5.4 66% 30	-7.2 97% 14	+1.8 96% 12	+46 95% 75	+87 95% 68	+114 95% 65	+95 90% 62	+19 84% 38	+2.7 93% 30	-7.6 62% 6	+70 90% 46	+2.4 88% 90	+0.4 88% 41	-3.8 89% 94	+0.9 81% 20	+1.8 90% 64	+0.68 83% 89	+46 92% 2	+0.58 89% 8	+0.94 89% 44	+1.06 84% 62	\$202 57	\$358 49	
NHZQ1229 NHZF1023 NHZJ823	HAZELDEAN Q1229 ^{PV} APR	+127 89% 17	+1.5 80% 62	+5.0 66% 34	-3.6 98% 65	+4.0 98% 52	+57 97% 28	+102 96% 26	+126 96% 38	+80 88% 83	+20 81% 31	+4.6 96% 3	-7.2 62% 9	+80 90% 21	+11.7 89% 7	+0.0 89% 50	-2.5 90% 85	+0.4 81% 47	+4.1 91% 15	+0.95 83% 97	+28 97% 23	+0.62 92% 11	+0.96 92% 49	+0.96 88% 31	\$274 3	\$422 8	
NHZQ319 NHZM586 NHZL1175	HAZELDEAN Q319 ^{PV} APR	+146 90% 10	+3.8 78% 42	+9.4 63% 3	-8.7 98% 5	+2.5 98% 20	+54 96% 39	+105 96% 19	+142 95% 12	+141 89% 7	+17 81% 55	+3.2 95% 17	-10.1 64% 1	+80 89% 20	+2.4 89% 90	+2.8 90% 7	+1.0 81% 29	-1.0 81% 97	+4.9 91% 83	+0.58 82% 15	+31 96% 15	+0.78 89% 37	+1.02 88% 64	+1.12 84% 78	\$249 11	\$457 2	
NHZR1561 NORL519 NHZJ115	HAZELDEAN RONALDO R1561 ^{PV} HBR	+125 77% 18	-7.7 78% 97	+4.9 68% 35	-5.7 97% 32	+6.2 96% 91	+66 95% 5	+111 95% 10	+146 92% 9	+150 87% 4	+9 80% 96	+0.8 93% 90	-3.9 59% 71	+73 82% 38	+4.3 80% 76	-0.8 80% 69	-1.6 81% 73	-0.2 75% 79	+3.9 81% 18	+0.57 71% 82	+14 94% 77	+0.62 82% 11	+0.76 82% 10	+0.96 76% 31	\$200 60	\$362 46	
DYFN6 NZE14647008839 DYFL18	INGLEBRAE FARMS NOBLEMAN HBR	+84 88% 44	+9.5 81% 3	+10.5 71% 1	-7.0 95% 16	+2.1 96% 15	+57 95% 26	+90 95% 60	+110 95% 74	+101 91% 53	+10 88% 93	+3.3 93% 15	-2.2 65% 94	+61 90% 72	+10.6 88% 12	+0.9 88% 30	+0.9 89% 30	+0.2 82% 59	+2.3 90% 52	-0.31 81% 7	+23 93% 41	+0.84 89% 50	+1.12 89% 83	+1.16 86% 86	\$205 54	\$359 48	
VMIC31 USA14739204 VMIU102	INNESDALE CARBINE C31 ^{SV} HBR	+4 90% 94	+0.9 86% 67	-4.9 78% 97	-1.5 95% 90	+5.4 97% 81	+36 96% 97	+63 96% 99	+82 95% 98	+87 94% 74	+19 94% 38	+0.5 93% 94	-5.2 68% 40	+36 92% 99	+3.2 91% 85	+0.0 91% 50	-0.7 92% 58	+1.0 86% 16	+0.7 92% 88	+0.34 84% 62	+7 91% 94	+0.66 82% 16	+0.96 82% 49	+1.06 77% 62	\$126 98	\$235 98	
Breed Average EBVs		+77.	+2.3	+3.1	-4.6	+3.9	+52	+93	+121	+103	+17	+2.2	-4.8	+69	+6.6	+0.1	-0.2	+0.4	+2.5	+0.24	+21	+0.84	+0.96	+1.02	+206	+353	

Angus Australia - MSA Marbling Research Breeding Values

Date: March 18, 2025

Page: 6

Ident	Name																										
Sire Dam	Reg.	MSA MBL RBV	Calv-Ease		Birth		Growth			Maternal			Fert			Carcase				Feed	Temp	Structural		Selection Index			
			Dir	Dtrs	GL	BW	200	400	600	MCW	Milk	SS	DC	CW	EMA	Rib	P8	RBY	IMF	NFI-F	Doc	Claw	Angle	Leg	\$A	\$A-L	
NZE13300018 WWEL3 NZE13300116373	KAKAHU PIVOTAL 18004 ^{PV} HBR	+176 88% 4	+4.8 74% 32	+2.7 66% 59	-7.1 96% 15	+3.8 96% 47	+55 95% 33	+102 95% 25	+122 95% 47	+67 90% 93	+29 84% 2	+3.6 93% 11	-8.9 64% 2	+84 89% 14	+9.7 89% 17	+1.0 88% 28	+1.5 89% 22	+0.4 81% 47	+4.4 90% 11	+0.65 81% 87	+1 91% 99	+0.72 88% 25	+0.92 88% 39	+1.10 83% 73	\$311 1	\$461 1	
GXNQ209 USA18463791 VLYL1327	KELLY ANGUS QUINN Q209 ^{SV} HBR	+51 75% 69	+7.8 75% 10	+9.7 61% 2	-7.1 95% 15	+2.1 95% 15	+66 92% 5	+119 93% 4	+146 90% 9	+122 86% 22	+28 78% 2	+0.6 82% 93	-9.5 50% 1	+92 80% 5	+6.3 80% 52	-1.6 80% 83	-3.1 80% 90	+0.4 74% 47	+2.4 81% 49	-0.23 66% 10	+36 86% 8	+1.32 74% 99	+1.24 73% 95	+1.26 69% 97	\$293 1	\$493 1	
NDIP481 USA17354145 NDIL236	KENNY'S CREEK PINNACLE P481 HBR	+162 89% 6	+2.4 81% 55	-0.8 71% 86	-3.8 98% 62	+3.0 98% 29	+48 97% 66	+88 97% 66	+116 96% 60	+65 92% 94	+20 87% 28	+0.3 95% 96	-3.4 63% 81	+77 91% 27	+4.1 90% 78	+1.6 89% 18	+1.5 90% 22	-1.5 83% 99	+6.4 91% 1	+1.27 83% 99	+18 90% 61	+0.96 91% 73	+0.92 91% 39	+0.86 88% 10	\$214 43	\$326 74	
KILK18 USA16417285 USA15107929	KILLAIN ALASKA K18 ^{PV} HBR	-22 85% 99	-10.0 75% 99	-4.4 64% 96	-0.8 90% 94	+7.0 89% 96	+66 89% 5	+122 88% 3	+164 89% 2	+174 86% 1	+15 83% 66	+3.8 83% 8	-2.3 52% 94	+84 85% 14	+6.5 85% 49	-3.0 85% 96	-4.9 86% 98	+1.0 82% 16	-1.2 88% 99	-0.65 77% 1	+36 80% 8	+1.10 77% 91	+0.78 77% 12	+1.00 66% 43	\$126 98	\$289 90	
KILP1 USA18578965 KILM9	KILLAIN RAINMAN P1 ^{PV} HBR	-31 86% 99	-4.6 75% 92	-5.8 62% 98	-7.0 95% 16	+4.4 93% 61	+59 92% 19	+104 90% 22	+130 91% 31	+125 87% 18	+12 81% 84	+3.2 82% 17	-2.4 52% 93	+76 87% 29	+13.8 86% 3	-2.5 86% 93	-1.6 87% 73	+2.3 78% 1	-1.7 89% 99	+0.31 77% 59	+5 86% 96	+0.94 78% 70	+0.98 78% 54	+1.08 67% 68	\$177 81	\$315 79	
BLAP130 SRKK306 BLAK113	KNOWLA PACKER P130 ^{PV} HBR	+51 85% 69	+2.0 68% 58	+1.3 62% 72	-2.8 93% 77	+4.8 92% 70	+57 90% 28	+102 89% 25	+135 90% 22	+115 85% 30	+12 79% 87	+1.2 86% 82	-5.9 55% 25	+78 86% 24	+8.2 84% 30	-0.2 84% 55	-1.1 85% 65	+0.8 77% 24	+1.9 87% 62	+0.16 77% 42	+27 84% 27	+0.80 81% 41	+1.18 81% 90	+0.94 77% 25	\$235 21	\$395 20	
BLAR190 BLAN127 BLAP172	KNOWLA REVOLUTION R190 ^{PV} HBR	+169 74% 5	+11.1 69% 1	+6.2 57% 22	-11.6 96% 1	+0.5 95% 3	+39 92% 93	+79 92% 87	+104 88% 83	+71 85% 90	+25 77% 7	+2.7 88% 30	-3.0 46% 87	+53 78% 89	+14.6 77% 2	+4.3 78% 2	+3.1 78% 8	+0.1 71% 65	+4.9 79% 7	+0.78 65% 93	+42 89% 3	+0.74 81% 29	+1.02 81% 64	+1.02 78% 49	\$215 43	\$343 61	
BLA21S48 USA18837398 BLAL21	KNOWLA SO RIGHT S48 ^{PV} HBR	+126 77% 18	+4.6 81% 34	-1.7 62% 89	-5.0 99% 42	+3.1 98% 31	+56 97% 30	+100 97% 32	+126 95% 38	+108 88% 41	+16 79% 64	+2.8 96% 27	-5.5 51% 33	+79 81% 22	+8.4 85% 28	+1.1 83% 26	+1.2 83% 26	-0.2 77% 79	+3.9 84% 18	+0.40 67% 68	+34 97% 10	+0.88 86% 58	+0.96 85% 49	+0.98 84% 36	\$234 22	\$393 21	
NZCP117 USA17960722 NZCM67	KO B074 BEAST MODE P117 ^{PV} HBR	+150 80% 9	+2.1 81% 57	+6.2 70% 22	-5.3 98% 38	+1.8 98% 12	+60 96% 16	+102 97% 27	+126 95% 39	+118 93% 26	+11 87% 92	+2.2 92% 40	-5.2 59% 40	+63 84% 66	+2.1 86% 92	+1.2 86% 24	+0.1 86% 43	-1.1 81% 98	+4.4 85% 11	+0.56 71% 82	+14 91% 79	+0.64 89% 14	+0.50 89% 1	+0.72 85% 2	\$215 42	\$382 29	
VLYL483 HKFJ5 VLYH221	LAWSONS LINKEDIN L483 ^{SV} HBR	+57 90% 64	+3.6 88% 44	-6.9 79% 99	-1.1 98% 92	+4.2 98% 57	+58 97% 23	+109 97% 13	+153 95% 5	+140 95% 8	+25 95% 7	+4.0 94% 6	-5.1 68% 42	+103 93% 1	+9.2 89% 21	-1.3 88% 78	+2.1 91% 15	+0.2 84% 59	+2.0 91% 59	-0.17 82% 13	+20 89% 56	+1.04 85% 85	+0.80 85% 15	+0.86 81% 10	\$215 42	\$390 24	
VLYQ44 VLYM518 VLYK914	LAWSONS MIRACULOUS Q44 ^{PV} HBR	+101 88% 32	+5.0 79% 30	-0.8 68% 86	-7.5 97% 12	+3.5 96% 40	+48 94% 66	+89 94% 64	+106 93% 80	+98 90% 58	+11 84% 90	+3.0 91% 22	-4.4 61% 60	+41 89% 98	+18.8 88% 1	-0.2 87% 55	+0.2 88% 42	+1.9 80% 2	+1.9 90% 62	+0.32 81% 60	+36 84% 8	+0.96 85% 73	+0.90 85% 34	+0.98 81% 36	\$231 25	\$378 32	
VLYM518 USA17354145 VLYH229	LAWSONS MOMENTOUS M518 HBR	+193 95% 2	-1.7 98% 83	-0.7 91% 85	-5.2 99% 39	+3.9 99% 50	+50 99% 57	+92 99% 53	+114 99% 64	+81 98% 82	+23 98% 15	+2.7 99% 30	-3.6 83% 77	+52 97% 90	+11.8 96% 7	-1.2 97% 77	+0.1 96% 43	+0.3 95% 53	+5.7 96% 3	+0.82 91% 94	+36 99% 8	+0.86 99% 54	+0.98 99% 54	+1.16 99% 86	\$232 24	\$353 53	
VLYP316 USA16295688 VLYM527	LAWSONS PROPHET P316 ^{PV} HBR	+157 86% 7	+5.5 79% 26	+5.6 71% 28	-2.1 93% 84	+3.5 96% 40	+57 94% 27	+88 94% 68	+106 92% 80	+67 88% 93	+17 83% 52	+0.3 91% 96	-4.1 63% 67	+66 87% 59	+12.7 86% 4	-3.3 86% 97	-3.5 87% 93	+1.4 79% 6	+4.1 88% 15	+0.35 79% 63	+30 93% 19	+0.68 91% 19	+0.76 91% 10	+0.80 87% 5	\$269 3	\$395 20	
Breed Average EBVs		+77.	+2.3	+3.1	-4.6	+3.9	+52	+93	+121	+103	+17	+2.2	-4.8	+69	+6.6	+0.1	-0.2	+0.4	+2.5	+0.24	+21	+0.84	+0.96	+1.02	+206	+353	

Angus Australia - MSA Marbling Research Breeding Values

Date: March 18, 2025

Page: 7

Ident	Name																										
Sire Dam	Reg.	MSA MBL RBV	Calv-Ease		Birth		Growth			Maternal			Fert			Carcase				Feed	Temp	Structural		Selection Index			
			Dir	Dtrs	GL	BW	200	400	600	MCW	Milk	SS	DC	CW	EMA	Rib	P8	RBY	IMF	NFI-F	Doc	Claw	Angle	Leg	\$A	\$A-L	
VLJR4010 USA17354145 VLYP4005	LAWSONS ROCKY R4010^{PV} HBR	+131 80% 15	+6.5	+7.9	-4.8	+2.4	+54	+97	+125	+93	+23	+2.5	-4.5	+74	+11.6	+1.2	+0.8	+0.2	+4.7	+1.39	+19	+1.00	+1.02	+1.08	\$257	\$414	
VLJR1217 USA18217198 VLYN976	LAWSONS ROMULUS R1217^{PV} HBR	+141 75% 11	+3.3	+7.5	-5.5	+3.9	+65	+110	+151	+124	+18	+1.3	-2.5	+88	+10.2	-3.6	-3.6	+1.1	+4.1	+0.49	+12	+1.16	+1.10	+0.96	\$257	\$423	
NMMD78 USA14237157 NMMY119	MILLAH MURRAH EQUATOR D78 HBR	+8 94% 93	-0.4	+6.2	-9.0	+5.0	+62	+111	+157	+181	+18	+2.1	-3.8	+90	+1.7	-2.0	-3.2	+0.9	+0.1	-1.04	+22	+0.82	+0.94	+1.06	\$157	\$353	
NMMH250 NMME78 NMME120	MILLAH MURRAH HERCULES HBR	+69 90% 55	-1.2	+3.2	-2.8	+6.0	+42	+75	+104	+93	+12	+2.5	-4.3	+61	+3.0	-1.5	-0.6	+0.4	+2.4	+0.16	+20	+0.92	+1.12	+1.08	\$154	\$276	
NMMK35 NZE469 NMMG41	MILLAH MURRAH KINGDOM K35 HBR	-42 94% 99	-12.5	-6.4	-2.0	+8.7	+55	+100	+138	+149	+11	+0.9	-5.6	+65	+7.8	+0.2	+0.1	+1.0	-1.0	-0.75	+28	+0.84	+1.28	+1.20	\$141	\$281	
NMMK42 NGMT30 NMMH4	MILLAH MURRAH KLOONEY K42 HBR	+74 94% 51	+3.5	+1.0	-6.0	+5.7	+47	+86	+107	+90	+22	+2.2	-4.9	+64	+6.8	-1.1	-3.1	+1.1	+2.0	-0.01	+17	+0.84	+0.90	+1.04	\$193	\$325	
NMML133 USA17091363 NMMH49	MILLAH MURRAH LOCH UP L133 HBR	+37 94% 79	+4.9	+4.6	-5.5	+4.8	+59	+99	+131	+100	+25	+2.2	-2.9	+80	+1.8	-2.2	-3.9	-0.7	+1.8	-0.11	+32	+0.70	+1.08	+1.16	\$172	\$313	
NMMM308 NZE14647008839 NMMH331	MILLAH MURRAH MILESTONE HBR	+75 88% 51	+7.0	+4.8	-7.2	+4.5	+42	+79	+90	+75	+16	+2.5	-5.6	+43	+5.0	+2.4	+4.5	-0.3	+2.5	+0.18	+19	+0.84	+0.98	+1.20	\$198	\$334	
NJWH283 NJWF189 NJWE51	MILWILLAH ELSOM H283^{PV} HBR	+57 90% 65	+1.4	-5.6	-2.2	+3.9	+46	+82	+121	+107	+21	+1.7	-1.3	+76	+9.1	-2.5	-2.7	+1.5	+1.5	+0.34	+20	+0.74	+0.82	+1.04	\$150	\$269	
NJWE158 NZEE230 VTMX114	MILWILLAH LAD E158^{SV} HBR	+137 90% 13	-2.5	-9.1	-7.7	+7.9	+41	+78	+105	+108	+7	+2.0	-5.1	+42	+9.0	-0.9	-4.9	+1.4	+3.3	+0.26	+13	+0.80	+0.84	+0.74	\$159	\$281	
BWFQ33 USA18181757 BWFN9	MOOGENILLA QUINELLA Q33^{PV} HBR	+141 85% 12	+3.9	+9.8	-6.4	+3.8	+60	+116	+146	+84	+28	+3.0	-3.8	+99	+9.2	-1.1	+0.3	-0.5	+4.9	+0.56	+32	+0.90	+0.92	+0.90	\$274	\$428	
EGRM39 HIOG18 EGRD9	MOSQUITO CREEK MAXIMUS HBR	+44 84% 74	+3.9	+4.0	-6.1	+5.0	+60	+106	+140	+136	+16	+1.9	-6.9	+74	+7.1	+1.0	+0.4	+0.3	+2.3	+0.05	+12	+0.82	+0.86	+0.96	\$241	\$428	
EGRQ53 USA18463791 EGRG2	MOSQUITO CREEK QUALITY Q53 HBR	-44 89% 99	+8.6	+9.8	-6.7	+0.2	+59	+104	+131	+98	+28	+1.4	-5.6	+87	+2.4	-0.3	-0.2	-0.1	+0.0	-0.41	+31	+1.12	+1.20	+1.14	\$216	\$379	
Breed Average EBVs		+77.	+2.3	+3.1	-4.6	+3.9	+52	+93	+121	+103	+17	+2.2	-4.8	+69	+6.6	+0.1	-0.2	+0.4	+2.5	+0.24	+21	+0.84	+0.96	+1.02	+206	+353	

Angus Australia - MSA Marbling Research Breeding Values

Date: March 18, 2025

Page: 8

Ident	Name																										
Sire Dam	Reg.	MSA MBL RBV	Calv-Ease		Birth		Growth			Maternal			Fert			Carcase				Feed		Temp		Structural		Selection Index	
			Dir	Dtrs	GL	BW	200	400	600	MCW	Milk	SS	DC	CW	EMA	Rib	P8	RBY	IMF	NFI-F	Doc	Claw	Angle	Leg	\$A	\$A-L	
CSWP036 USA17236055 CSWL123	MURDEDUKE BLACK PEARL HBR	+195 91% 2	+1.9 79% 59	+3.2 70% 54	-8.5 96% 6	+4.7 96% 68	+49 95% 63	+93 95% 51	+131 94% 28	+118 91% 26	+21 85% 22	+3.2 90% 17	-7.7 68% 5	+61 91% 74	+1.1 90% 96	+0.5 90% 39	-1.1 91% 65	-1.0 82% 97	+6.3 92% 88	+0.66 86% 88	+15 95% 73	+0.84 93% 50	+1.16 94% 88	+1.22 90% 94	\$217 40	\$384 28	
CSWK428 VTME343 CSWE175	MURDEDUKE KICKING K428 PV HBR	+27 91% 85	+7.6 89% 11	+9.9 77% 2	-7.6 98% 11	+1.9 98% 13	+48 97% 70	+93 97% 53	+115 97% 63	+88 96% 73	+25 95% 8	+3.3 97% 15	-6.1 70% 22	+67 93% 57	+2.5 92% 90	-0.3 90% 57	-3.1 92% 90	+0.3 87% 53	+0.8 93% 86	-0.07 86% 20	+41 97% 3	+0.84 97% 50	+1.00 97% 59	+1.18 95% 89	\$188 72	\$342 63	
CSWQ011 VLYM518 CSWN026	MURDEDUKE QUARTERBACK HBR	+175 89% 4	+7.2 89% 13	+2.0 80% 66	-9.5 99% 3	+3.0 99% 29	+53 99% 46	+100 99% 30	+133 99% 24	+104 97% 47	+24 95% 8	+4.1 98% 5	-6.8 68% 12	+77 93% 27	+4.7 91% 71	+1.5 92% 20	+2.7 92% 10	-1.1 87% 98	+5.4 91% 4	+0.62 82% 86	+22 99% 44	+0.70 99% 22	+1.08 99% 76	+1.08 98% 68	\$243 15	\$411 12	
NURM208 SMPG357 NURK45	MURRAY GENESIS M208 PV HBR	+37 88% 79	+1.3 80% 64	+5.7 70% 27	-5.8 94% 30	+4.6 94% 66	+49 93% 61	+94 93% 49	+127 93% 35	+106 89% 45	+19 87% 39	+3.8 86% 8	-6.4 64% 17	+82 89% 16	+16.6 88% 1	-0.2 86% 55	-2.5 89% 85	+2.0 83% 1	+1.2 90% 79	+1.43 82% 99	+6 88% 95	+0.90 91% 62	+1.00 90% 59	+0.68 87% 1	\$235 21	\$393 21	
NURM204 USA16956101 NURJ43	MURRAY PROCEED M204 PV HBR	+254 90% 1	-5.7 82% 94	+7.6 71% 11	-4.2 96% 55	+4.5 96% 64	+62 95% 11	+107 95% 16	+145 94% 9	+137 90% 9	+19 85% 38	+2.3 90% 44	-3.5 64% 79	+89 91% 7	+13.5 90% 3	-5.0 88% 99	-5.8 91% 99	+0.7 86% 29	+6.9 92% 1	+0.06 85% 32	+23 93% 41	+0.94 91% 70	+0.74 91% 8	+0.90 88% 16	\$237 19	\$396 20	
SFNL21 NZE10322010609 SFNH65	NAMPARA LIBERTY L21 SV HBR	-72 92% 99	-4.9 88% 93	-5.3 74% 97	-6.5 98% 21	+8.6 98% 99	+68 97% 4	+111 97% 10	+148 97% 8	+165 95% 2	+19 95% 38	+2.9 96% 24	-1.0 64% 99	+79 94% 23	+7.6 92% 36	-2.1 90% 90	-0.9 93% 62	+1.8 88% 2	-2.4 93% 99	-0.65 86% 1	+24 95% 38	+0.92 92% 66	+0.88 92% 30	+0.98 88% 36	\$145 95	\$301 86	
WLGP5 USA18229425 WLG M24	NARANDA PIMP P5 SV APR	+112 88% 26	+11.2 77% 1	+10.1 63% 2	-11.6 97% 1	+1.6 95% 10	+52 94% 47	+99 94% 34	+128 93% 33	+95 89% 62	+20 82% 31	+1.6 87% 70	-3.8 55% 73	+83 89% 14	+6.7 87% 47	+1.6 87% 18	+2.7 88% 10	-0.3 78% 83	+3.5 90% 25	+0.27 82% 54	-3 90% 99	+0.66 87% 16	+0.72 87% 6	+1.08 82% 68	\$234 22	\$393 22	
SKOJ6 VTME343 NZCE115	NEWLYN PARK EMPEROR J6 PV HBR	+14 86% 91	-7.0 78% 96	-5.4 70% 97	-6.9 93% 17	+7.5 92% 98	+65 91% 7	+111 90% 10	+143 91% 11	+160 88% 2	+8 84% 97	+1.3 85% 80	-3.8 64% 73	+78 87% 24	+8.4 86% 28	-0.9 86% 71	-1.1 87% 65	+1.3 81% 8	+0.2 88% 94	-0.73 80% 1	+14 85% 80	+1.08 86% 89	+0.80 85% 15	+0.76 81% 3	\$182 78	\$343 62	
NZE21095018 HIOE7 NZE21095112H49	NGAPUTAH I P206 PV HBR	+136 89% 13	+10.1 81% 2	+5.3 73% 31	-1.5 93% 90	-0.1 97% 2	+41 96% 90	+83 95% 79	+96 95% 92	+67 91% 93	+28 86% 3	+2.7 94% 30	-8.2 68% 3	+54 90% 88	+6.1 89% 50	+0.0 89% 80	-2.1 89% 80	+1.1 82% 13	+4.1 91% 15	+0.17 83% 43	+18 89% 64	+0.94 84% 70	+1.10 84% 80	+1.10 80% 73	\$246 13	\$386 26	
USA16981588 USA16381311 USA16408070	PA FULL POWER 1208 PV HBR	+112 93% 25	-5.0 95% 93	-4.7 86% 97	-4.9 99% 44	+3.8 98% 47	+52 98% 48	+98 98% 37	+119 98% 55	+74 98% 88	+14 98% 75	+2.0 98% 56	-2.5 75% 92	+72 96% 42	+13.0 95% 4	-1.7 94% 85	+0.6 95% 35	+1.1 92% 13	+3.0 95% 35	+0.88 88% 96	+21 98% 49	+1.24 98% 98	+0.94 98% 44	+0.72 91% 2	\$227 29	\$332 69	
SMPG357 VTMB1 SMPD245	PATHFINDER GENESIS G357 PV HBR	+5 95% 94	-0.2 97% 75	+4.2 90% 43	-7.2 99% 14	+6.6 99% 94	+61 99% 13	+109 99% 13	+148 99% 7	+137 98% 9	+26 98% 6	+4.4 98% 4	-6.8 86% 12	+96 97% 3	+14.1 96% 2	+0.3 96% 43	-0.9 96% 62	+1.4 95% 6	+0.3 96% 93	+0.66 91% 88	+28 99% 23	+0.86 98% 54	+1.06 98% 72	+0.78 96% 4	\$238 19	\$419 9	
SMPK22 SMPG357 SMPH756	PATHFINDER COMPLETE K22 SV HBR	+67 93% 57	+10.2 93% 2	+8.2 81% 7	-9.1 99% 4	+0.9 98% 5	+41 98% 91	+74 98% 93	+96 98% 92	+49 97% 99	+26 97% 5	+2.9 98% 24	-6.6 75% 15	+53 95% 88	+7.0 94% 43	+3.6 94% 3	+5.4 94% 1	+0.2 93% 59	+2.3 94% 52	+0.52 88% 79	+27 97% 27	+0.52 96% 4	+0.84 96% 22	+0.66 94% 1	\$237 20	\$362 46	
SMPM651 VTMG67 SMPH66	PATHFINDER MASTERPIECE HBR	+78 87% 48	+4.2 80% 38	+4.7 72% 37	-6.3 92% 24	+5.0 95% 74	+56 93% 29	+104 93% 22	+129 93% 33	+138 89% 9	+20 88% 27	+3.5 89% 12	-7.8 64% 5	+53 88% 88	+9.9 87% 16	-1.7 87% 85	-3.9 87% 95	+1.6 81% 4	+1.6 89% 69	-0.19 81% 12	+33 83% 12	+1.00 77% 80	+1.24 77% 95	+1.20 74% 92	\$233 23	\$424 7	
Breed Average EBVs		+77.	+2.3	+3.1	-4.6	+3.9	+52	+93	+121	+103	+17	+2.2	-4.8	+69	+6.6	+0.1	-0.2	+0.4	+2.5	+0.24	+21	+0.84	+0.96	+1.02	+206	+353	

Angus Australia - MSA Marbling Research Breeding Values

Date: March 18, 2025

Page: 9

Ident	Name																										
Sire Dam	Reg.	MSA MBL RBV	Calv-Ease		Birth		Growth			Maternal			Fert			Carcase					Feed	Temp	Structural		Selection Index		
			Dir	Dtrs	GL	BW	200	400	600	MCW	Milk	SS	DC	CW	EMA	Rib	P8	RBY	IMF	NFI-F	Doc	Claw	Angle	Leg	\$A	\$A-L	
SMPN56 HIOG18 SMPL179	PATHFINDER NUCLEUS N56 ^{SV} HBR	+53 91% 68	+4.9 81% 31	+3.1 70% 55	-3.4 96% 68	+5.3 97% 79	+59 96% 18	+105 95% 19	+137 95% 18	+132 91% 13	+15 90% 67	+4.6 94% 3	-7.0 64% 10	+75 92% 33	+13.0 90% 4	+0.9 90% 30	+1.0 91% 29	+1.0 83% 16	+1.7 92% 67	+0.43 85% 71	+8 90% 92	+0.74 86% 29	+0.78 87% 12	+0.82 82% 6	\$253 9 <brtd> <td>\$442 3</td> </brtd>	\$442 3	
SMPP516 SMPM558 SMPJ282	PATHFINDER PHAT CAT P516 ^{SV} HBR	+212 84% 1	+5.2 78% 29	+2.8 66% 58	-7.6 96% 11	+4.5 96% 64	+53 95% 46	+90 95% 62	+119 95% 54	+84 91% 78	+26 85% 4	+5.4 92% 1	-8.9 59% 2	+49 87% 93	+12.2 85% 6	-3.3 85% 97	-2.8 86% 88	+0.7 78% 29	+5.9 87% 2	+0.09 79% 35	+39 92% 5	+0.72 90% 25	+1.06 90% 72	+0.90 85% 16	\$286 1	\$442 3	
SMPQ1357 NORL519 SMPM18	PATHFINDER QUEST Q1357 ^{PV} HBR	+97 89% 35	-3.8 77% 90	-0.6 68% 85	-6.4 94% 22	+5.6 95% 84	+65 93% 7	+117 92% 5	+164 93% 2	+179 87% 1	+15 81% 69	+1.6 86% 70	-5.0 64% 45	+95 89% 4	+5.9 88% 57	-2.3 88% 92	-4.8 89% 98	+1.1 80% 13	+3.2 90% 31	+0.22 82% 49	+28 88% 23	+0.92 86% 66	+0.68 87% 4	+1.12 83% 78	\$210 48	\$402 16	
NZE41-97 NZE53195 NZE63988	PINEBANK WAIGROUP 41/97 # HBR	+10 95% 92	+3.5 96% 44	-3.6 91% 95	-3.4 98% 68	+3.6 99% 42	+37 98% 96	+64 98% 99	+77 98% 99	+50 98% 98	+18 98% 43	+0.9 98% 89	-4.1 89% 67	+17 97% 99	+5.3 96% 64	+1.1 96% 26	+0.2 96% 42	+1.0 95% 16	+1.0 96% 83	-0.05 90% 22	+33 93% 12	+0.30 88% 1	+0.92 88% 39	+0.94 83% 25	\$161 90	\$249 97	
WQCQ47 VLYM518 VLYM1690	QUANDEN SPRINGS HBR	+105 85% 30	+10.3 77% 2	+7.5 67% 11	-9.2 92% 4	-0.6 92% 1	+52 91% 47	+98 91% 35	+132 91% 26	+112 86% 35	+28 80% 2	+5.2 85% 1	-4.9 60% 47	+50 86% 93	+9.9 85% 16	+0.2 86% 46	+1.2 86% 26	+0.4 78% 47	+2.4 87% 49	-0.24 79% 10	+28 88% 23	+1.02 84% 82	+1.00 85% 59	+1.10 80% 73	\$221 36	\$393 21	
NORF340 NZE04379 VLYZ1393	RENNYLEA BLACK GOLD F340 ^{PV} HBR	+144 90% 11	+6.3 83% 19	+1.1 75% 74	-2.9 96% 75	+1.3 96% 7	+35 95% 98	+65 94% 98	+80 94% 99	+82 92% 81	+3 92% 99	+0.9 91% 89	-2.8 70% 89	+21 91% 99	+2.1 90% 92	-0.4 90% 60	+0.3 90% 40	-0.1 83% 75	+4.4 91% 11	-0.10 85% 18	+14 90% 78	+0.76 88% 33	+0.82 88% 18	+0.72 84% 2	\$143 95	\$263 95	
NORE11 NGMY145 VLYY5	RENNYLEA EDMUND E11 ^{PV} HBR	+110 97% 26	+8.8 99% 5	+0.4 97% 79	-6.8 99% 18	+1.2 99% 7	+34 99% 98	+64 99% 99	+84 99% 98	+55 99% 98	+16 99% 61	+1.9 99% 59	-8.8 95% 2	+50 98% 92	+4.2 98% 77	+3.5 98% 3	+1.3 98% 24	-0.2 98% 79	+4.2 98% 14	+0.77 96% 93	+23 99% 41	+0.54 99% 5	+1.02 99% 64	+1.08 99% 68	\$208 51	\$329 72	
NORH708 NORC511 NORE176	RENNYLEA H708 ^{PV} APR	+260 95% 1	-7.6 93% 97	+2.0 86% 66	+1.2 98% 99	+4.7 98% 68	+47 98% 72	+102 98% 26	+129 98% 32	+128 97% 15	+12 97% 88	+2.4 98% 40	-3.3 82% 82	+72 96% 41	+11.9 95% 6	-3.7 95% 99	-6.5 96% 99	+2.0 93% 1	+7.1 96% 1	+0.66 93% 88	+21 98% 49	+0.70 98% 22	+0.68 98% 4	+0.92 97% 20	\$219 38	\$363 45	
NORK163 NORH106 NORE176	RENNYLEA K163 ^{PV} APR	+87 93% 42	+5.0 90% 30	-7.6 80% 99	-3.8 98% 62	+2.6 98% 22	+39 98% 93	+74 98% 94	+94 97% 93	+67 97% 93	+10 96% 96	+0.8 78% 96	-6.0 95% 24	+63 94% 68	+19.1 94% 60	-0.4 94% 68	-1.3 92% 1	+2.7 95% 44	+2.6 88% 42	+0.16 91% 58	+19 90% 14	+0.64 90% 6	+0.72 90% 6	+1.02 87% 49	\$244 14	\$360 48	
NORK522 NORE11 NORF810	RENNYLEA KODAK K522 ^{SV} HBR	+142 93% 11	+8.9 95% 5	+8.6 85% 6	-4.8 99% 46	+1.4 99% 8	+44 98% 82	+82 98% 81	+108 98% 77	+110 97% 38	+11 97% 90	+4.6 98% 3	-7.6 76% 6	+46 96% 95	+3.8 94% 81	+3.4 94% 4	+1.4 94% 23	-0.4 92% 86	+4.0 89% 16	+0.32 96% 60	+7 96% 94	+0.60 97% 10	+0.80 97% 15	+0.94 95% 25	\$203 57	\$378 32	
NORL508 USA17366506 NORH414	RENNYLEA L508 ^{PV} HBR	+173 94% 4	+1.7 84% 61	+8.3 78% 7	-5.9 99% 29	+2.6 99% 22	+46 98% 77	+85 98% 74	+118 98% 56	+94 98% 64	+27 98% 4	+1.3 98% 80	-7.4 82% 7	+55 96% 85	+5.7 95% 59	+0.9 96% 30	-0.4 96% 53	-0.2 94% 79	+5.5 95% 3	+0.66 89% 88	+15 99% 74	+0.66 98% 16	+0.82 98% 18	+0.88 97% 13	\$236 20	\$386 26	
NORL683 NORE11 NORJ631	RENNYLEA L683 ^{PV} APR	+61 90% 62	+2.9 85% 50	+1.9 75% 67	-4.4 98% 52	+4.9 97% 72	+55 96% 37	+95 96% 47	+116 96% 61	+100 94% 54	+5 93% 99	+2.4 95% 40	-6.6 71% 15	+77 91% 28	+4.7 90% 71	+0.5 88% 39	-1.4 91% 70	+0.8 86% 24	+2.4 91% 49	+0.57 85% 82	+23 95% 43	+0.70 92% 22	+0.86 92% 25	+1.00 89% 43	\$234 22	\$387 25	
NORP987 NORM763 NORM1184	RENNYLEA P987 ^{PV} APR	+235 88% 1	+10.3 75% 2	+9.0 66% 4	-8.2 97% 7	+1.5 97% 9	+51 96% 53	+99 96% 35	+124 96% 41	+128 94% 16	+7 89% 98	+0.4 95% 95	-3.1 63% 85	+72 90% 42	+5.7 89% 59	+3.9 89% 2	+2.4 89% 12	-1.3 82% 99	+8.3 90% 1	+0.96 81% 97	+11 96% 86	+0.90 93% 62	+1.02 93% 64	+1.04 90% 55	\$226 30	\$406 14	
Breed Average EBVs		+77.	+2.3	+3.1	-4.6	+3.9	+52	+93	+121	+103	+17	+2.2	-4.8	+69	+6.6	+0.1	-0.2	+0.4	+2.5	+0.24	+21	+0.84	+0.96	+1.02	+206	+353	

Angus Australia - MSA Marbling Research Breeding Values

Date: March 18, 2025

Page: 10

Ident	Name																										
Sire Dam	Reg.	MSA MBL RBV	Calv-Ease		Birth		Growth			Maternal			Fert		Carcase					Feed	Temp	Structural		Selection Index			
			Dir	Dtrs	GL	BW	200	400	600	MCW	Milk	SS	DC	CW	EMA	Rib	P8	RBY	IMF	NFI-F	Doc	Claw	Angle	Leg	\$A	\$A-L	
NORQ1081 NORH708 NORL841	RENNYLEA Q1081 ^{PV} APR	+237 87% 1	-3.1	+4.8	-3.8	+3.9	+50	+92	+119	+108	+13	+3.6	-5.7	+49	+8.9	+0.6	-0.6	+0.3	+6.8	+0.78	+14	+0.86	+0.88	+0.88	\$238	\$388	
NORQ213 NORK907 NORL110	RENNYLEA Q213 ^{PV} APR	+45 87% 74	+9.0	+7.9	-7.5	+0.9	+63	+118	+148	+94	+25	+0.5	-10.1	+101	+8.3	+0.8	+0.2	+0.1	+3.3	+0.75	+28	+0.50	+0.70	+0.88	\$331	\$516	
NORR992 NORN542 NORM1034	RENNYLEA R992 ^{PV} APR	+185 77% 3	+5.2	+8.0	+1.8	+1.2	+44	+84	+114	+83	+26	+1.7	-6.3	+67	+11.5	+1.9	+2.4	-0.3	+6.4	+1.13	+25	+0.58	+0.80	+0.80	\$256	\$407	
TRHP52 TRHL9 TRHH92	RICHMOND HILL PLAY P52 ^{SV} HBR	+143 90% 11	+5.4	+3.9	+0.1	+4.0	+53	+93	+116	+124	+11	+4.2	-6.3	+75	+11.5	-4.9	-2.8	+1.6	+3.2	-0.30	+32	+1.04	+1.04	+0.96	\$234	\$411	
NZE14572019 HKFM103 NZE14572117009	RISSINGTON SOVEREIGN Q485 HBR	+175 77% 4	+11.4	+9.7	-7.5	+0.5	+62	+115	+156	+123	+21	+2.5	-4.9	+95	+8.8	-0.7	-3.1	-0.3	+6.6	+0.77	-4	+0.90	+0.94	+1.18	\$274	\$462	
NZE21159019 USA18217198 NZE21159117053	SEVEN HILLS 312/19 ^{PV} HBR	+107 87% 28	+3.0	+5.6	-7.7	+3.5	+52	+94	+123	+95	+21	-0.9	-2.9	+76	+9.8	-3.5	-4.1	+1.0	+4.0	+1.18	+8	+1.00	+0.94	+1.04	\$226	\$361	
APBK11 VTMB1 APBF2	SHACORRAHDALU KINETIC K11 HBR	+112 84% 25	+9.9	+10.5	-9.0	+0.3	+49	+88	+105	+97	+10	+4.6	-6.8	+64	+10.4	+3.8	+2.5	+0.6	+2.5	+0.89	+2	+0.96	+1.20	+1.06	\$239	\$411	
APB21S24 USA18636106 APBJ23	SHACORRAHDALU PHOENIX HBR	+39 76% 77	+9.1	+6.4	-8.1	-0.7	+56	+102	+134	+84	+25	+3.0	-8.9	+91	+5.3	+2.7	+4.5	-0.1	+1.9	+0.99	+13	+0.92	+1.12	+1.08	\$284	\$452	
APBR5 TFAK132 HBUP80	SHACORRAHDALU ROYALE R5 HBR	+30 87% 83	+8.1	+8.6	-6.8	+2.2	+47	+91	+113	+63	+24	+2.3	-6.5	+67	+6.1	+4.2	+5.3	-0.2	+1.6	+1.00	+10	+0.84	+1.02	+0.74	\$245	\$387	
SYAN340 SYAL178 SGMK250	STONEY POINT NOLTE N340 ^{SV} HBR	+91 86% 39	-1.5	-8.6	-6.2	+6.0	+72	+128	+164	+160	+15	+3.5	-3.0	+105	+6.3	-3.2	-5.3	+0.7	+3.0	-0.12	+5	+0.98	+0.88	+1.18	\$214	\$390	
SYAP147 USA17936442 SWAH233	STONEY POINT PERRY P147 ^{PV} HBR	+128 88% 17	+4.6	+1.6	-4.8	+4.7	+56	+103	+133	+111	+20	+1.6	-7.3	+95	+10.0	-1.2	-0.3	+0.4	+3.8	-0.23	+6	+0.86	+0.76	+0.64	\$265	\$435	
NZE19507018 NORL508 NZE19507113J320	STORTH OAKS FULLY LOADED HBR	+119 88% 21	+8.6	+6.5	-11.6	+1.2	+45	+89	+134	+136	+22	+3.2	-7.5	+65	+3.3	+0.9	+0.3	-0.6	+4.1	+0.87	+32	+0.54	+0.78	+1.06	\$192	\$381	
NZE19507013 VTME343 NZE19507111G183	STORTH OAKS JACK J7 ^{SV} HBR	+55 92% 66	+6.1	+8.2	-4.8	+4.4	+61	+113	+151	+143	+17	+3.5	-1.9	+80	+8.3	-0.1	-3.1	-0.3	+2.5	+0.11	+20	+1.00	+0.98	+0.92	\$185	\$370	
Breed Average EBVs		+77.	+2.3	+3.1	-4.6	+3.9	+52	+93	+121	+103	+17	+2.2	-4.8	+69	+6.6	+0.1	-0.2	+0.4	+2.5	+0.24	+21	+0.84	+0.96	+1.02	+206	+353	

Angus Australia - MSA Marbling Research Breeding Values

Date: March 18, 2025

Page: 11

Ident	Name																										
Sire Dam	Reg.	MSA MBL RBV	Calv-Ease		Birth		Growth			Maternal			Fert			Carcase					Feed	Temp	Structural		Selection Index		
			Dir	Dtrs	GL	BW	200	400	600	MCW	Milk	SS	DC	CW	EMA	Rib	P8	RBY	IMF	NFI-F	Doc	Claw	Angle	Leg	\$A	\$A-L	
VSNG34 VTMB1 VSNE22	STRATHEWEN BERKLEY G34 ^{PV} HBR	+76 90% 50	+7.6 84% 11	+7.9 76% 9	-6.5 95% 21	+3.6 94% 42	+57 93% 25	+108 93% 14	+142 93% 12	+148 91% 5	+19 90% 39	+2.3 88% 44	-7.1 68% 9	+83 91% 15	+6.3 90% 52	+0.9 89% 30	+0.1 90% 43	+0.2 86% 59	+2.1 91% 57	-0.09 85% 19	+30 89% 20	+1.10 88% 91	+1.24 88% 95	+1.10 85% 73	\$227 29	\$432 5	
USA17236055 USA15354674 USA16214508	SYDGEN BLACK PEARL 2006 ^{PV} HBR	+120 96% 21	+2.3 98% 56	+7.5 93% 11	-7.1 99% 15	+3.2 99% 33	+51 99% 51	+85 99% 75	+123 99% 45	+86 98% 75	+21 99% 22	+1.5 99% 74	-3.7 89% 75	+74 98% 36	+8.3 97% 29	+0.3 97% 43	-0.6 97% 56	+0.5 96% 41	+2.9 97% 37	+0.30 92% 58	+16 99% 71	+1.04 99% 85	+1.20 99% 92	+1.14 98% 82	\$215 42	\$346 59	
VTMK52 USA16295688 VTMH423	TE MANIA KALIBROOK K52 ^{PV} HBR	+139 87% 12	+7.7 79% 10	+5.4 70% 30	-3.3 94% 70	+1.3 95% 7	+51 92% 54	+102 92% 26	+128 91% 34	+104 88% 48	+30 84% 1	+1.7 88% 67	-6.1 66% 22	+71 88% 44	+4.2 86% 77	+0.8 85% 32	+1.9 87% 17	-0.7 83% 94	+5.6 89% 3	+1.41 80% 99	+8 87% 93	+1.22 90% 98	+1.12 90% 83	+1.18 87% 89	\$245 13	\$414 10	
VTMK138 USA16295688 VTMH17	TE MANIA KIRBY K138 ^{PV} HBR	+257 96% 1	+0.5 88% 70	+7.9 81% 9	-1.4 99% 90	+4.7 99% 68	+52 98% 48	+89 98% 64	+118 98% 57	+99 98% 55	+20 98% 29	+2.6 98% 33	-8.0 84% 4	+64 97% 65	+6.3 97% 52	+1.8 96% 16	+3.1 97% 8	-1.9 95% 99	+8.6 96% 1	+0.89 90% 96	+15 99% 75	+0.78 99% 37	+0.76 99% 10	+0.94 99% 25	\$255 8	\$415 10	
VTMN424 VTMJ89 VTMJ214	TE MANIA NEBO N424 ^{PV} HBR	+161 96% 6	+9.2 91% 4	-0.9 84% 86	-6.7 99% 19	+4.0 98% 52	+53 98% 43	+101 98% 28	+134 98% 24	+102 97% 50	+29 97% 2	+4.3 97% 47	-4.9 73% 4	+53 97% 89	+6.8 96% 46	-0.6 95% 64	-4.0 96% 95	+0.2 90% 59	+3.9 94% 18	-0.06 85% 21	+48 98% 1	+0.92 98% 66	+0.84 98% 22	+0.92 98% 20	\$212 47	\$362 46	
VTMN1387 VTMK138 VTML452	TE MANIA NEON N1387 ^{SV} HBR	+315 93% 1	+0.9 82% 67	+2.3 74% 63	-6.4 98% 22	+3.6 98% 42	+47 98% 71	+84 98% 76	+105 97% 81	+95 96% 63	+18 92% 42	+1.3 96% 80	-6.3 66% 19	+38 94% 99	+3.0 93% 87	+0.1 92% 48	-1.0 94% 63	-2.2 85% 99	+10. 93% 1	-0.36 87% 6	+25 98% 36	+0.74 97% 29	+0.80 97% 15	+0.92 96% 20	\$212 46	\$354 53	
VTMP888 VTMK226 VTMH423	TE MANIA PESO P888 ^{PV} HBR	+58 93% 64	+7.6 81% 11	+5.9 73% 25	-5.3 98% 38	+2.0 98% 14	+56 97% 29	+113 97% 7	+144 97% 10	+116 96% 29	+25 94% 6	+2.4 94% 40	-7.0 70% 10	+88 94% 8	+5.9 94% 57	-0.2 93% 55	+1.0 94% 29	+0.4 87% 64	+1.8 93% 15	-0.15 84% 38	+24 96% 50	+0.84 95% 76	+1.08 95% 36	+0.98 93% 36	\$255 8	\$439 4	
VTMQ854 USA18229488 VTML1244	TE MANIA QUEBEC Q854 ^{SV} HBR	+71 92% 54	+8.7 85% 6	+2.0 75% 66	-2.4 98% 81	+1.5 98% 9	+55 97% 37	+95 97% 46	+123 97% 45	+82 95% 81	+27 91% 3	+1.3 96% 80	-4.5 62% 57	+69 93% 49	+3.5 92% 83	+1.3 91% 23	+0.0 92% 45	-0.3 83% 83	+3.5 93% 25	+0.48 86% 76	+32 97% 13	+0.62 98% 11	+0.76 98% 10	+0.72 97% 2	\$227 29	\$363 45	
VTMR970 VTMP149 VTMP287	TE MANIA RESOLUTION R970 ^{PV} HBR	+99 73% 34	+2.6 75% 53	+5.5 61% 29	-4.5 94% 50	+3.4 95% 38	+57 92% 25	+108 92% 15	+137 88% 18	+102 84% 50	+25 77% 8	+2.0 83% 56	-6.6 47% 15	+81 78% 19	+9.2 75% 21	+0.0 76% 50	-0.1 77% 47	+0.6 69% 35	+3.0 78% 35	-0.17 65% 13	+27 89% 27	+0.76 79% 33	+0.88 79% 30	+1.16 76% 86	\$269 3	\$433 5	
DXTR725 USA18962396 DXTH647	TEXAS ICEMAN R725 ^{PV} HBR	+67 78% 57	-0.6 81% 77	+3.0 66% 56	-3.9 98% 60	+3.7 98% 45	+53 97% 44	+100 97% 32	+128 96% 33	+104 89% 48	+13 81% 83	+2.2 96% 48	-2.8 53% 89	+77 83% 26	+12.4 85% 5	+3.2 84% 5	+5.1 84% 2	+0.2 79% 59	+1.7 84% 67	+0.09 68% 35	+40 96% 4	+1.28 89% 99	+0.94 88% 44	+0.60 86% 1	\$215 42	\$360 48	
DXTM100 USA15848590 DXTZ183	TEXAS MT KAPUTAR M100 ^{PV} HBR	+96 87% 35	+5.4 82% 27	+7.1 71% 14	-10.0 97% 2	+4.6 96% 66	+61 95% 13	+106 95% 17	+145 94% 9	+137 90% 9	+14 91% 74	+3.7 92% 9	-3.4 64% 81	+84 90% 13	+5.2 88% 66	-2.4 88% 92	-3.8 89% 94	+0.2 83% 59	+2.1 89% 57	+0.26 80% 53	+34 93% 11	+0.96 85% 73	+1.14 85% 86	+1.00 81% 43	\$191 69	\$371 39	
DBLL292 USA16295688 VSNF04	TOPBOS LEADING EDGE L292 ^{PV} HBR	+53 91% 68	+2.6 89% 53	+8.6 75% 6	-5.9 98% 29	+6.5 98% 93	+73 97% 1	+125 97% 2	+164 97% 2	+152 95% 4	+23 96% 12	+1.4 97% 77	-4.2 70% 64	+84 93% 14	+4.5 92% 74	-2.2 91% 91	-5.1 92% 98	+0.1 88% 65	+1.6 93% 69	+0.03 86% 29	+20 97% 56	+0.94 92% 70	+0.80 92% 15	+0.82 88% 6	\$225 31	\$416 10	
USA18066037 USA17262835 USA16924432	V A R LEGEND 5019 ^{SV} HBR	+76 87% 50	-5.0 81% 93	+4.9 70% 35	-6.3 96% 24	+5.1 96% 76	+69 94% 3	+122 94% 2	+149 94% 7	+159 91% 2	+8 89% 97	+2.8 90% 27	-3.9 62% 71	+88 90% 9	+9.5 88% 19	-3.9 87% 99	-5.9 87% 99	+1.4 80% 6	+1.9 90% 62	-0.25 80% 9	+20 89% 56	+1.04 97% 85	+0.62 96% 2	+0.86 81% 10	\$215 42	\$396 20	
Breed Average EBVs		+77.	+2.3	+3.1	-4.6	+3.9	+52	+93	+121	+103	+17	+2.2	-4.8	+69	+6.6	+0.1	-0.2	+0.4	+2.5	+0.24	+21	+0.84	+0.96	+1.02	+206	+353	

Angus Australia - MSA Marbling Research Breeding Values

Date: March 18, 2025

Page: 12

Ident	Name																										
Sire Dam	Reg.	MSA MBL RBV	Calv-Ease		Birth		Growth			Maternal			Fert			Carcase				Feed		Temp		Structural		Selection Index	
			Dir	Dtrs	GL	BW	200	400	600	MCW	Milk	SS	DC	CW	EMA	Rib	P8	RBY	IMF	NFI-F	Doc	Claw	Angle	Leg	\$A	\$A-L	
NZE18954020 NZE21159016327 NZE18954118P105	WAITANGI R257^{PV} HBR	+182 76% 3	+0.6 69% 69	+1.3 60% 72	-6.6 96% 20	+3.8 96% 47	+53 94% 45	+92 94% 56	+125 92% 40	+102 87% 52	+25 78% 6	+3.3 90% 15	-8.2 50% 3	+68 80% 52	+9.2 81% 21	+0.0 81% 50	-0.4 74% 70	+0.0 81% 3	+5.5 66% 99	+1.46 89% 55	+20 76% 50	+0.84 78% 4	+0.68 69% 16	+0.90 78% 7	\$257 7	\$413 11	
LEJ21S102 NJWN498 ASHL24	WALLAWONG SAFE & SOUND HBR	+137 72% 13	+7.0 73% 14	+3.3 61% 53	-6.4 92% 22	+4.6 90% 66	+48 89% 66	+85 88% 76	+108 86% 76	+93 83% 65	+19 77% 39	+2.1 80% 52	-2.4 46% 93	+61 77% 72	+6.4 74% 51	-1.1 75% 75	-1.2 76% 67	+0.5 68% 41	+4.1 77% 15	+0.37 63% 65	+14 84% 79	+0.54 68% 5	+0.72 68% 6	+1.08 66% 68	\$193 67	\$327 73	
QKBP29 SMPG357 QKBM01	WARRAWEE PATROL P29^{PV} HBR	+53 85% 68	+7.2 79% 13	+10.9 71% 1	-11.9 96% 1	+3.0 94% 29	+56 93% 32	+105 92% 19	+140 91% 14	+131 88% 13	+18 82% 47	+2.3 88% 44	-10.1 65% 1	+100 86% 2	+9.2 85% 21	+3.6 85% 3	+2.0 86% 16	+0.1 79% 65	+2.1 87% 57	+0.67 78% 88	+30 88% 19	+0.80 78% 41	+1.16 78% 88	+1.00 74% 43	\$270 3	\$479 1	
NWPG188 USA15462648 NWPE295	WATTLETOP FRANKLIN G188^{SV} HBR	+2 93% 95	+4.5 96% 35	+6.7 88% 17	-4.4 99% 52	+2.3 99% 18	+64 98% 8	+109 98% 13	+140 98% 14	+116 98% 29	+25 98% 8	+3.7 98% 9	-3.7 78% 75	+84 96% 13	+1.6 95% 94	-1.3 95% 78	-2.6 95% 86	-0.1 93% 75	+0.4 94% 92	-1.12 89% 1	+33 97% 12	+1.10 96% 91	+0.98 96% 54	+0.98 94% 36	\$192 69	\$355 52	
NWPE111 USA14474596 NWPC36	WATTLETOP SITZ 458N E111^{SV} HBR	+119 91% 22	+4.7 90% 33	+7.0 80% 15	-3.8 97% 62	+2.7 98% 24	+51 97% 55	+91 97% 58	+125 97% 41	+97 95% 60	+25 96% 7	+2.0 95% 56	-1.4 74% 98	+83 93% 15	+5.6 92% 61	-4.2 92% 99	-3.4 93% 92	+0.9 89% 20	+2.8 93% 40	-0.53 85% 2	+26 95% 31	+0.98 87% 77	+0.92 88% 39	+1.10 83% 73	\$188 72	\$324 75	
CWDJ17 BNAD145 CWDF14	WEATHERLY JAMES J17^{SV} HBR	+115 90% 23	-2.6 80% 86	-4.9 72% 97	-3.3 93% 70	+6.0 93% 89	+50 92% 59	+84 92% 78	+111 93% 72	+118 90% 26	+3 87% 99	+1.3 86% 80	-3.8 67% 73	+67 90% 57	+8.6 89% 26	+1.0 89% 28	+2.3 90% 13	+1.0 85% 16	+3.3 91% 29	-0.03 84% 23	+5 88% 96	+0.84 88% 50	+1.24 87% 95	+1.04 81% 55	\$197 63	\$334 69	
CWDM5 SMPG357 CWDJ15	WEATHERLY MOXY M5^{SV} HBR	+52 80% 68	+2.9 80% 50	+6.9 70% 16	-4.4 93% 52	+4.0 96% 52	+56 94% 31	+100 94% 30	+135 95% 21	+113 93% 34	+27 90% 3	+2.7 89% 30	-6.4 62% 17	+93 86% 5	+7.2 84% 41	+2.9 85% 6	+0.0 85% 45	+0.3 80% 53	+2.6 85% 44	+0.27 73% 54	+20 92% 53	+0.94 92% 70	+1.06 92% 72	+1.00 84% 43	\$237 20	\$404 15	
Breed Average EBVs		+77.	+2.3	+3.1	-4.6	+3.9	+52	+93	+121	+103	+17	+2.2	-4.8	+69	+6.6	+0.1	-0.2	+0.4	+2.5	+0.24	+21	+0.84	+0.96	+1.02	+206	+353	

For further information, please contact staff at Angus Australia:
P: 02 6773 4600 | E office@angusaustralia.com.au

www.angusaustralia.com.au



ANGUS
AUSTRALIA