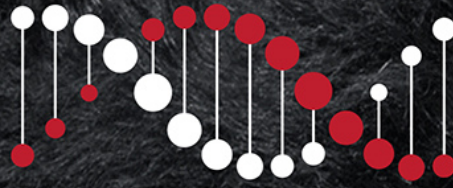


TACE



TransTasman Angus Cattle Evaluation

MSA Marbling

RESEARCH BREEDING VALUES

MAY 2026

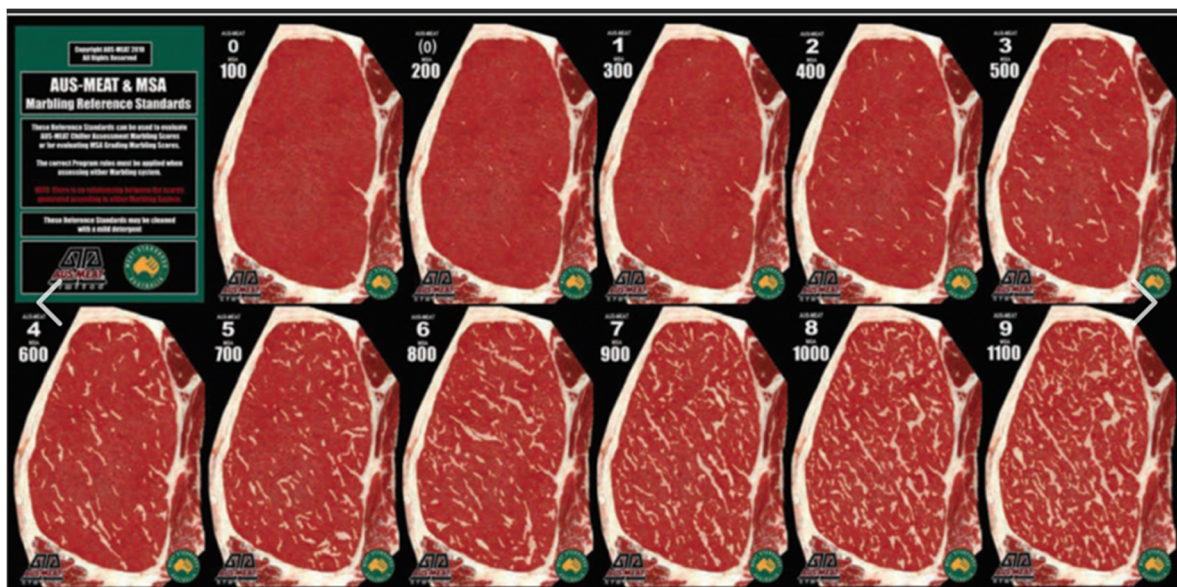
BACKGROUND

Angus Australia has partnered with the Animal Genetics and Breeding Unit (AGBU) and the Agricultural Business Research Institute (ABRI) to undertake research into the genetics Meat Standards Australia (MSA) Marbling Score in Australian Angus Cattle.

MSA Marbling Score, being the subjective visual assessment of intramuscular fat at the chilled carcass grading site, has been identified as a trait of importance, particularly as it is related to Angus carcass value and consumer eating experience. It is also the commercially recognised method for describing marbling in the national grading system, MSA.

As a result of this collaborative research, MSA Marbling Score RBVs are now routinely analyzed every two weeks in the TransTasman Angus Cattle Evaluation (TACE). To underpin this analysis, MSA marbling scores are utilised from both member collected data and from progeny in the Angus Sire Benchmarking Program. Angus animals, mostly steers, that are MSA graded between 300 and 1000 days of age at slaughter are included in the analysis.

MSA Marbling scores are collected using the industry standard 100 – 1100 scoring system (with increments of 10 score unit). A score of 100 indicates no/minimal marbling and a score of 1100 indicates abundant marbling. Along with the amount of marbling, the scores also take into account distribution and size of fleck (i.e. coarse or fine marbling).



Study of the Angus Australia data by AGBU has demonstrated that a significant portion of the differences in the MSA marbling score of individual animals can be attributed to genetics, having a high **heritability of 0.54**. The study also estimated the genetic correlation between MSA marbling score and a wide range of production traits included in the multi-trait analysis model utilized in TACE (from the BREEDPLAN program). As expected, the genetic correlations with carcass IMF, bull ultrasound scan IMF and heifer ultrasound scan IMF had the strongest relationship of 0.80, 0.35 and 0.35 respectively.

From this collaborative research it is now possible to generate breeding values for MSA Marbling Score and select animals for use within Angus breeding programs with desirable genetics for this trait. This is underpinned by a large and growing reference population of MSA Marbling Scores ($n > 10,000$ as of May 2023), coupled with genomic and pedigree data.

UNDERSTANDING THE RESEARCH BREEDING VALUES

MSA Marbling Research Breeding Values (RBVs) are provided in this publication for sires with (i) at least 50% accuracy for their MSA Marbling RBV, and (ii) one or more progeny born in the last two years.

MSA Marbling Score (MMS) RBVs are estimates of genetic differences between animals in MSA marbling score at the 12/13th rib grading site in a 400 kg steer carcass.

MMS RBVs are calculated from MSA marbling scores (taken by a trained/accredited carcass grader), pedigree, genomics and correlated traits (e.g. Carcass IMF, bull and heifer ultrasound scan IMF). MMS EBVs are expressed in MSA marbling score units.

Higher, more positive MMS RBVs indicate the animal is expected to produce progeny with higher marbling scores in a 400 kg steer carcass.

USING THE RESEARCH BREEDING VALUES IN SELECTION

The Research Breeding Values in this publication enable Angus breeders to select animals with desirable genetics for MSA marbling score, balanced with selection for other traits of importance within their breeding objective.

It is important to note that the Research Breeding Values are subject to greater potential change than EBVs routinely reported as part of the TransTasman Angus Cattle Evaluation (TACE) and should be used with caution in animal selection decisions.

Research Breeding Values may change as improvements are made to the analytical models that are used, and as additional performance information is collected.

ACKNOWLEDGEMENTS

Angus Australia gratefully acknowledges the contributions of Animal Genetics and Breeding Unit (AGBU) and the Agricultural Business Research Institute (ABRI), and in particular, Dr Gilbert Jeyaruban, Dr Steve Miller, Dr Natalie Connors, Dr Andrew Swan, Dr David Johnston and Dr Brad Crook, in the calculation of the Research Breeding Values that are included in this publication.

Angus Australia also acknowledges Meat and Livestock Australia (MLA) for the related R&D funding supplied to AGBU and Angus Australia for the ASBP. Also, for overseeing the MSA grading system, including the collection of MSA marbling scores in the ASBP, particularly through the grading by Janie Lau.

DISCLAIMER

The Research Breeding Values contained within this publication were calculated from data supplied to Angus Australia by members and/or third parties. Whilst every effort is made to ensure the accuracy of the data, Angus Australia, its officers and employees, assume no responsibility for the accuracy of the RBVs, nor the outcome (including consequential loss) of an action taken based on the information presented in this publication.

Angus Australia - MSA Marbling Research Breeding Values

Date: May 1, 2026

Page: 1

Ident	Name																										
Sire Dam	Reg.	MSA MBL RBV	Calv-Ease		Birth		Growth			Maternal			Fert			Carcase					Feed	Temp	Structural		Selection Index		
			Dir	Dtrs	GL	BW	200	400	600	MCW	Milk	SS	DC	CW	EMA	Rib	P8	RBY	IMF	NFI-F	Doc	Claw	Angle	Leg	\$A	\$A-L	
QRB22T10 USA17328461 NBNH88	AISTHORPE LM TORNADO T10 HBR	+80 75% 50	+1.0	-2.8	-6.1	+5.1	+56	+99	+128	+111	+16	+3.8	-3.9	+74	+7.8	-0.8	-2.1	+1.0	+1.8	-0.31	+8	+0.82	+0.92	+0.72	\$201	\$346	
NXO21S957 NXOQ654 NXOP733	AJC S957 PV APR	+241 73% 1	+5.5	+9.3	-5.2	+3.3	+54	+97	+128	+72	+22	+2.3	-8.2	+71	+9.3	+2.2	+1.2	-0.9	+8.1	+0.26	+35	+0.92	+0.96	+0.74	\$312	\$471	
ARRR11 CAN2043806 QMUN24	ALKIRA RENEGADE R11 PV HBR	+0 89% 95	+7.5	+6.1	-4.2	+2.4	+47	+98	+126	+98	+24	+2.1	-9.0	+77	+6.0	+1.2	+0.4	+0.2	+1.3	+0.53	+1	+0.76	+0.82	+0.92	\$234	\$406	
SYM22T325 SYMR215 SYMQ230	ALLEDALE TRUE BLUE T325 PV HBR	+128 71% 20	+1.9	+5.0	-6.5	+3.3	+62	+108	+144	+114	+16	+2.0	-7.2	+84	+8.3	-1.8	-0.1	+0.0	+4.6	-0.51	+24	+0.82	+0.94	+0.82	\$281	\$455	
DGJG10 VTMB1 DGJZ15	ALLOURA GET CRACKING G10 SV HBR	+200 93% 2	+7.6	+7.0	-2.9	+2.7	+44	+75	+88	+86	+12	-0.4	-8.6	+50	+14.4	+1.3	+0.4	+0.9	+5.8	+0.41	+6	+0.50	+0.96	+0.90	\$274	\$430	
DGJQ30 WWEL3 DGJK117	ALLOURA QUINELLA Q30 SV HBR	+279 89% 1	+1.1	+0.5	+0.3	+3.0	+52	+96	+118	+122	+14	+3.3	-7.2	+66	+14.2	+0.1	+0.6	+0.8	+7.2	+0.38	+15	+0.90	+1.04	+1.14	\$276	\$451	
DGJ21S14 USA18217198 DGJQ02	ALLOURA SYNERGY S14 PV HBR	+80 76% 49	+4.7	+6.0	-7.8	+3.0	+60	+107	+139	+132	+15	+3.1	-6.4	+83	+7.4	+0.3	-1.5	+0.3	+3.2	+0.61	+22	+1.02	+1.14	+0.98	\$242	\$431	
CGKR232 NORN542 CGKM152	ALPINE RONALDO R232 PV HBR	+114 89% 27	+6.9	+7.1	-5.7	+1.9	+55	+102	+140	+112	+25	+2.9	-5.0	+78	+11.2	-3.4	-4.8	+0.7	+3.7	-0.16	+24	+0.62	+0.80	+1.02	\$236	\$405	
WJMM117 WJMF96 WJMG78	ARDCAIRNIE M117 SV HBR	+16 84% 90	+4.8	+0.1	-5.3	+4.0	+57	+100	+130	+147	+2	+3.3	-5.1	+77	+10.0	-1.0	-2.1	+1.6	+0.1	+0.02	+11	+0.82	+1.10	+0.90	\$194	\$379	
NAQA241 USA2928 NAQW38	ARDROSSAN EQUATOR A241 PV HBR	+46 98% 74	-1.2	+2.7	-4.4	+4.1	+49	+91	+121	+109	+20	+3.2	-8.4	+83	+7.8	-2.0	-0.5	+1.1	+1.8	+0.65	+25	+0.48	+0.88	+1.00	\$224	\$382	
NAQQ67 NMMN334 NAQL96	ARDROSSAN NECTAR Q67 PV HBR	+49 88% 72	+5.7	+6.5	-10.3	+3.5	+54	+98	+127	+127	+11	+2.9	-7.6	+53	+5.1	+1.5	-0.5	-0.2	+2.6	+0.14	+38	+0.36	+0.84	+1.06	\$217	\$404	
QQFH147 VTME343 NMMF123	ASCOT HALLMARK H147 PV HBR	+114 94% 27	-3.4	+2.1	-4.9	+7.0	+60	+109	+151	+140	+14	+3.7	-5.8	+79	-1.3	+0.8	-0.1	-0.9	+3.2	+0.29	+18	+0.48	+0.88	+1.04	\$191	\$361	
HIOE7 VTMB219 BVVB32	AYRVALE BARTEL E7 PV HBR	+132 98% 18	+8.3	+8.8	-4.3	+1.8	+50	+87	+113	+76	+25	+2.6	-10.0	+63	+7.6	-0.3	+0.7	+1.1	+3.7	+0.28	+5	+1.06	+1.02	+1.12	\$298	\$459	
Breed Average EBVs		+81.	+2.5	+3.2	-4.6	+3.8	+52	+94	+121	+103	+18	+2.3	-5.1	+69	+6.9	+0.1	-0.2	+0.4	+2.6	+0.24	+21	+0.83	+0.96	+1.01	+212	+361	

Angus Australia - MSA Marbling Research Breeding Values

Date: May 1, 2026

Page: 2

Ident	Name																										
Sire Dam	Reg.	MSA MBL RBV	Calv-Ease		Birth		Growth			Maternal			Fert		Carcase					Feed	Temp	Structural		Selection Index			
			Dir	Dtrs	GL	BW	200	400	600	MCW	Milk	SS	DC	CW	EMA	Rib	P8	RBY	IMF	NFI-F	Doc	Claw	Angle	Leg	\$A	\$A-L	
NBB21S86 NMMP15 NBBQ25	BALD BLAIR STIRLING S86 ^{PV} HBR	+78 88% 51	+4.7 80% 35	+9.0 69% 4	-3.8 96% 63	+2.6 96% 25	+66 95% 6	+113 95% 9	+152 95% 6	+127 90% 17	+20 84% 29	+4.1 90% 6	-4.8 62% 54	+93 89% 5	+6.3 88% 56	-1.1 88% 74	-4.2 88% 96	+0.0 80% 69	+3.3 90% 32	-0.07 82% 19	+3 93% 97	+0.70 93% 23	+0.64 93% 2	+1.12 90% 78	\$238 25	\$421 12	
ECMM114 VTMB1 BBAZ107	BANNABY BERKLEY M114 ^{SV} HBR	+106 86% 32	+4.2 79% 39	+2.9 71% 59	-9.6 95% 3	+4.2 94% 59	+56 92% 32	+95 93% 47	+136 93% 21	+164 88% 2	+6 86% 99	+4.0 88% 7	-9.1 67% 2	+65 88% 62	+2.8 87% 89	-1.3 87% 78	-3.9 87% 94	+0.3 81% 52	+2.6 88% 48	-0.02 80% 23	+17 85% 64	+0.80 87% 43	+0.80 88% 14	+1.12 84% 78	\$194 72	\$402 22	
VONN462 VONJ507 VONK224	BANQUET NUTTELLA N462 ^{PV} HBR	+23 87% 87	-3.7 86% 91	+2.3 71% 65	-4.1 96% 58	+7.2 98% 97	+56 97% 30	+105 96% 22	+143 92% 12	+109 91% 40	+21 95% 24	+3.5 61% 13	-4.7 61% 56	+69 91% 52	+3.0 89% 88	-0.3 89% 57	-1.5 89% 71	+0.0 83% 69	+1.4 90% 77	-0.44 79% 4	+55 96% 1	+0.54 81% 6	+0.94 81% 43	+0.88 75% 14	\$187 78	\$327 77	
MBA22T17 USA19180956 HIOP51	BARNETT TITUS T17 ^{PV} HBR	+153 72% 11	+7.8 66% 10	+7.5 57% 11	-2.6 92% 80	+2.8 91% 28	+69 88% 3	+115 85% 7	+150 85% 7	+142 82% 7	+19 76% 39	+2.2 79% 49	-7.1 43% 12	+94 76% 4	+7.8 72% 38	+0.9 71% 30	+0.1 72% 45	-0.9 63% 96	+5.9 76% 3	+0.54 64% 80	+30 81% 18	+1.00 68% 81	+0.76 68% 9	+0.80 59% 5	\$281 3	\$488 1	
NBNN239 USA16956101 NBNH215	BEN NEVIS NEWSFLASH N239 ^{PV} HBR	+32 90% 83	+0.1 87% 74	+2.1 76% 67	-4.1 98% 58	+4.9 98% 73	+59 96% 19	+99 97% 37	+134 97% 24	+118 94% 26	+17 94% 52	+0.9 93% 90	-2.0 65% 96	+83 92% 16	+5.5 91% 65	-2.4 91% 92	+0.0 92% 46	+0.5 86% 40	+1.3 92% 79	+0.23 84% 49	+9 92% 89	+0.96 94% 75	+1.00 93% 58	+0.92 90% 22	\$189 76	\$331 75	
NBNP122 USA17960722 NBNM115	BEN NEVIS PRIME P122 ^{PV} HBR	+156 87% 10	+4.2 80% 39	+7.0 70% 15	+0.2 94% 97	+2.3 95% 20	+55 94% 38	+85 94% 78	+105 89% 83	+71 88% 90	+12 88% 85	+2.7 61% 31	-4.7 89% 56	+54 89% 87	+5.9 88% 61	+1.4 87% 21	+2.9 88% 9	-0.6 80% 91	+4.5 89% 13	+0.37 81% 64	+22 85% 46	+0.74 92% 30	+0.76 91% 9	+0.98 88% 38	\$241 22	\$375 42	
NBNR138 USA17960722 NBNP153	BEN NEVIS RONAN R138 ^{PV} HBR	+28 78% 85	+2.9 77% 52	+5.4 69% 30	-8.3 88% 7	+3.6 90% 45	+72 90% 1	+118 90% 4	+147 90% 9	+137 86% 9	+12 80% 86	+2.2 83% 49	-5.1 58% 47	+78 82% 25	+9.6 79% 21	-1.8 79% 86	-2.5 80% 84	+0.8 72% 24	+1.1 82% 83	-0.05 72% 21	+29 85% 21	+0.74 85% 30	+0.86 88% 25	+0.92 84% 22	\$254 13	\$440 6	
WMYF3 VLYC402 WMYD120	BLACKROCK F3 ^{SV} HBR	+18 88% 89	+5.0 80% 32	+5.0 70% 35	-9.0 95% 5	+2.8 95% 28	+50 94% 60	+87 93% 72	+118 93% 57	+85 90% 77	+15 89% 68	+1.0 91% 88	-2.6 63% 92	+83 89% 15	+7.2 88% 45	-0.3 88% 57	+0.2 89% 43	+0.2 81% 58	+1.9 90% 65	+0.44 81% 72	+25 90% 33	+1.02 87% 84	+1.14 87% 86	+1.10 83% 73	\$194 72	\$325 78	
NGXQ227 VLYM518 NGXN221	BONGONGO BE QUICK Q227 ^{PV} HBR	+191 90% 3	+5.2 74% 30	+2.8 67% 60	-3.7 98% 65	+2.8 98% 28	+52 95% 53	+93 96% 56	+116 96% 63	+65 93% 93	+22 85% 19	+3.8 92% 86	-3.2 67% 8	+65 91% 62	+11.5 91% 10	+0.8 90% 32	+2.7 91% 11	+0.1 83% 64	+5.7 92% 4	+1.03 84% 98	+18 91% 64	+0.64 88% 14	+1.10 88% 80	+1.14 85% 83	\$262 8	\$392 29	
NGX22T1003 VLYR4010 BHRQ710	BONGONGO T1003 ^{PV} HBR	+189 75% 3	+7.0 72% 15	+8.8 64% 4	-9.0 94% 5	+0.4 92% 4	+50 89% 61	+97 87% 43	+125 86% 42	+73 84% 88	+21 79% 25	+2.7 82% 31	-7.8 50% 7	+80 78% 21	+9.6 75% 21	+3.1 75% 5	+3.5 76% 6	-0.6 68% 91	+6.0 79% 3	+1.02 68% 98	+13 84% 81	+1.12 75% 93	+1.12 75% 83	+1.04 71% 56	\$296 1	\$457 3	
NUIF32 NGMC196 NUID96	BONNY BROOKE FALCO F32 ^{SV} HBR	+43 82% 76	-2.0 68% 85	-10.4 56% 99	-0.2 91% 96	+5.9 89% 88	+54 91% 40	+84 89% 79	+111 91% 73	+92 84% 67	+19 78% 41	-0.4 77% 99	-2.1 52% 96	+67 84% 56	-1.8 82% 99	+2.2 82% 11	+1.4 83% 24	-1.2 73% 99	+2.4 82% 53	-0.38 73% 5	+19 81% 58	+0.94 79% 71	+0.90 79% 33	+1.04 74% 56	\$136 97	\$234 99	
HCAQ63 NGMG120 HCAK233	BOONAROO GENIUS Q63 ^{SV} HBR	+111 77% 29	+10.1 79% 2	+5.3 69% 31	-5.0 91% 44	+0.5 96% 4	+47 94% 74	+89 94% 67	+108 91% 78	+94 91% 64	+18 86% 45	+1.5 90% 75	-8.0 54% 6	+63 83% 69	+1.9 80% 93	+3.0 81% 6	+4.3 81% 4	-0.6 75% 91	+3.6 82% 26	-0.43 69% 4	+28 93% 24	+0.74 89% 30	+0.94 90% 43	+1.10 86% 73	\$233 30	\$395 26	
HCA22T221 HCAQ63 HCAQ11	BOONAROO GENIUS T221 ^{PV} HBR	+160 72% 9	+7.9 69% 10	+4.2 60% 44	-4.4 91% 54	+1.3 93% 9	+50 88% 61	+89 85% 66	+108 85% 78	+76 83% 86	+15 77% 67	+0.6 81% 94	-7.4 46% 10	+76 76% 32	+9.2 72% 25	+2.7 73% 7	+3.6 74% 6	-0.3 64% 83	+5.2 76% 6	-0.39 65% 5	+18 84% 61	+0.78 75% 38	+1.04 75% 68	+1.26 71% 97	\$275 4	\$425 10	
Breed Average EBVs		+81.	+2.5	+3.2	-4.6	+3.8	+52	+94	+121	+103	+18	+2.3	-5.1	+69	+6.9	+0.1	-0.2	+0.4	+2.6	+0.24	+21	+0.83	+0.96	+1.01	+212	+361	

Angus Australia - MSA Marbling Research Breeding Values

Date: May 1, 2026

Page: 3

Ident	Name																										
Sire Dam	Reg.	MSA MBL RBV	Calv-Ease		Birth		Growth			Maternal			Fert		Carcase					Feed	Temp	Structural		Selection Index			
			Dir	Dtrs	GL	BW	200	400	600	MCW	Milk	SS	DC	CW	EMA	Rib	P8	RBY	IMF	NFI-F	Doc	Claw	Angle	Leg	\$A	\$A-L	
NGME124 NAQA241 NGMB325	BOOROOMOOKA INSPIRED E124 HBR	+45 94% 75	-5.4	-0.8	-6.0	+3.7	+46	+82	+107	+105	+15	+0.9	-8.7	+83	+3.6	-0.2	+3.8	-0.3	+2.3	+0.94	+18	+0.80	+0.80	\$194	\$333		
NGM21S267 VTMN549 NGMQ580	BOOROOMOOKA NEWLY S267 HBR	+140 75% 15	+8.2	+6.4	-7.3	+0.5	+51	+89	+117	+94	+22	+2.0	-5.4	+76	+5.4	+1.3	+1.3	+0.0	+4.7	+0.54	+30	+0.42	+0.62	+0.88	\$238	\$393	
NGMN213 NGML201 NGML45	BOOROOMOOKA NORMANDY HBR	+113 87% 28	+11.0	+10.4	-7.8	+0.9	+42	+73	+98	+72	+23	+3.2	-9.2	+50	+3.6	-2.8	-3.6	+1.0	+3.1	+0.93	+31	+0.76	+0.62	+1.02	\$228	\$376	
NGMP96 WWEL3 NGMM566	BOOROOMOOKA PARAGON P96 HBR	+71 92% 56	-2.3	+3.2	-7.7	+3.8	+64	+120	+163	+131	+29	+3.5	-8.5	+112	+12.7	-2.9	-1.3	+1.5	+2.2	+0.75	+32	+0.84	+0.98	+1.06	\$295	\$480	
NGMR49 USA17960722 NGMP361	BOOROOMOOKA RAUDONIKIS HBR	+48 87% 73	+5.0	+4.8	-5.4	+3.6	+63	+106	+132	+97	+20	+3.6	-4.0	+66	+12.5	-0.2	-1.2	+0.9	+1.6	+0.14	+29	+1.06	+0.84	+0.88	\$252	\$407	
NGM22T246 TFAN90 NGMM566	BOOROOMOOKA THEODORE HBR	+168 76% 7	+3.4	+4.0	-6.0	+3.1	+54	+108	+146	+109	+23	+3.0	-8.9	+87	+14.3	+0.8	+1.3	+1.0	+4.4	+1.03	+29	+0.86	+1.02	+0.88	\$313	\$496	
NGM22T1254 NGMR350 NGMR41	BOOROOMOOKA TURBO T1254 HBR	+123 72% 23	+2.7	+4.9	-3.4	+5.4	+64	+113	+149	+122	+26	+3.2	-8.3	+107	+9.3	+0.8	+0.0	-0.3	+5.0	+0.82	+36	+0.68	+1.08	+1.16	\$290	\$477	
SRKK306 NJWG279 TFAD58	BOWMONT KING K306 PV HBR	+154 92% 10	-0.1	-6.2	-4.6	+4.3	+49	+79	+102	+84	+2	-0.3	-3.9	+65	+14.3	-0.5	-2.0	+1.5	+4.8	+0.46	+25	+0.56	+0.88	+0.68	\$233	\$347	
WLHD19 USA13058662 USA14311946	CHERYLTON STEWIE D19 PV HBR	+144 94% 14	+3.1	+3.1	-4.6	+3.1	+45	+89	+110	+97	+20	+2.2	-7.2	+57	+4.9	-1.6	+1.0	-0.2	+4.1	+0.43	+14	+1.02	+1.02	+1.06	\$219	\$373	
GTNM6 VTMF734 VSNF15	CHILTERN PARK MOE M6 PV HBR	+18 93% 89	+5.0	+3.1	-1.2	+3.2	+52	+99	+135	+78	+32	+1.5	-4.6	+84	+6.6	-1.1	+0.8	+0.2	+1.5	+0.31	+39	+0.70	+1.06	+1.08	\$230	\$366	
GTNP9 HKFJ5 GTNK26	CHILTERN PARK PICASSO P9 PV HBR	+114 87% 27	+9.0	+8.9	-3.6	+1.0	+53	+100	+127	+80	+27	+3.6	-8.5	+89	+6.1	-0.9	+0.6	-0.5	+4.1	+0.63	+32	+0.64	+0.74	+0.78	\$272	\$438	
GTNQ322 USA18636106 GTNL198	CHILTERN PARK QUADRANT HBR	+107 89% 32	+6.5	+4.1	-2.3	+3.9	+63	+119	+149	+112	+24	+4.3	-6.9	+93	+13.0	-1.6	-1.2	+0.5	+3.9	+0.94	+7	+1.08	+1.10	+0.96	\$295	\$480	
QMUM13 USA16295688 QMUG1	CLUNES CROSSING DUSTY M13 HBR	+56 94% 67	+2.4	+5.7	-6.6	+5.2	+62	+98	+115	+57	+17	+0.8	-7.7	+70	+13.4	-2.3	-2.6	+0.9	+2.0	+0.33	+9	+0.86	+0.86	+1.00	\$297	\$428	
Breed Average EBVs		+81.	+2.5	+3.2	-4.6	+3.8	+52	+94	+121	+103	+18	+2.3	-5.1	+69	+6.9	+0.1	-0.2	+0.4	+2.6	+0.24	+21	+0.83	+0.96	+1.01	+212	+361	

Angus Australia - MSA Marbling Research Breeding Values

Date: May 1, 2026

Page: 4

Ident	Name																										
Sire Dam	Reg.	MSA MBL RBV	Calv-Ease		Birth		Growth			Maternal			Fert			Carcase				Feed	Temp	Structural		Selection Index			
			Dir	Dtrs	GL	BW	200	400	600	MCW	Milk	SS	DC	CW	EMA	Rib	P8	RBY	IMF	NFI-F	Doc	Claw	Angle	Leg	\$A	\$A-L	
NBHL348 NZE14647008839 AHWJ81	CLUNIE RANGE LEGEND L348 ^{PV} HBR	+76 93% 53	-6.2	+4.4	-7.7	+5.8	+56	+102	+122	+155	+2	+2.8	-5.6	+61	+0.1	+3.8	+0.8	-0.7	+2.5	+0.13	+22	+0.50	+0.80	+1.22	\$152	\$325	
NBHP392 USA17960722 NBHM516	CLUNIE RANGE PLANTATION HBR	+131 89% 19	+4.5	+4.8	-5.0	+4.4	+68	+117	+145	+116	+24	+5.4	-5.2	+68	-1.0	-0.4	-1.3	-1.5	+4.2	+0.33	+25	+0.72	+0.90	+0.84	\$228	\$403	
WDCH249 USA14885809 WDCE9	COONAMBLE HECTOR H249 ^{SV} HBR	+13 94% 91	+0.5	+1.7	-8.3	+4.6	+45	+80	+99	+91	+5	+1.3	-4.9	+45	+9.0	+4.2	+4.1	+0.6	+0.3	-0.42	+38	+0.40	+0.50	+0.78	\$185	\$316	
USA19611994 USA18467508 USA18974126	DB ICONIC G95 ^{PV} HBR	+130 90% 19	+4.5	+6.2	-3.3	+2.9	+68	+124	+154	+146	+14	+3.2	-6.5	+87	+6.2	+0.1	+0.6	-0.7	+4.5	+0.26	+38	+1.20	+0.98	+0.82	\$269	\$478	
NJS21S15 USA18636106 QHEJ100	DEVANAH SATURN S15 ^{PV} HBR	+71 87% 57	+4.2	+2.5	-7.6	+3.6	+63	+109	+142	+105	+25	+4.1	-6.7	+85	+9.1	-0.5	-0.4	+0.0	+2.3	+0.43	+16	+0.92	+1.06	+0.96	\$258	\$425	
NJS22T48 GTNM6 NJSQ2	DEVANAH TOLEDO T48 ^{PV} HBR	-17 78% 98	+7.1	+6.1	-0.7	+2.9	+57	+101	+131	+95	+22	+1.8	-6.0	+89	+7.3	+2.0	+3.5	-0.4	+1.6	+0.53	+25	+0.82	+1.22	+1.24	\$243	\$405	
WKGQ202 WKGN129 WKGL21	DIAMOND ONE ALL IN Q202 ^{SV} HBR	+12 89% 91	-9.4	-8.6	-5.6	+8.4	+75	+128	+174	+154	+21	+3.1	-4.6	+108	+9.4	-4.5	-4.7	+1.7	-0.7	-1.45	+31	+0.90	+0.62	+0.76	\$211	\$368	
NGC21S068 USA18170041 NGCM191	DULVERTON SMART MISSILE HBR	+108 77% 31	+4.1	+1.8	-3.0	+2.1	+58	+99	+129	+95	+13	+2.1	-3.5	+71	+7.4	-0.9	+0.4	+0.1	+2.9	-0.42	+28	+1.00	+1.20	+1.08	\$230	\$374	
BHRQ1163 BHRN394 BHRK074	DUNOON QUICK DRAW HBR	+176 79% 5	-1.0	+1.6	-5.8	+3.7	+56	+106	+137	+112	+21	+3.6	-3.7	+71	+9.2	-0.6	-2.0	-0.2	+5.7	+0.68	+13	+0.78	+0.62	+0.86	\$224	\$375	
CYIR18 QMUM13 CYIM611	EBONY BEEF BILLIE RAY R18 ^{PV} APR	+42 87% 76	+2.0	+7.3	-3.4	+5.5	+66	+106	+128	+68	+23	+2.8	-6.8	+81	+12.6	-1.9	-0.2	+0.7	+1.9	+0.74	-3	+1.02	+0.88	+1.06	\$302	\$443	
USA16198796 USA14686137 USA15452880	EF COMPLEMENT 8088 ^{PV} HBR	+35 97% 81	+4.7	+6.3	-4.6	+3.0	+52	+98	+130	+100	+21	+1.5	-7.6	+74	+7.9	+1.3	+0.6	+0.8	+1.5	+0.48	+20	+0.92	+1.24	+1.16	\$252	\$419	
WWEL3 HIOG18 WWEJ8	ESSLEMONT LOTTO L3 ^{PV} HBR	+143 96% 14	-5.0	-3.5	-5.3	+4.7	+61	+111	+141	+134	+14	+3.6	-10.0	+89	+14.8	-0.8	+0.5	+1.6	+3.8	+0.25	+14	+1.12	+1.00	+1.12	\$301	\$482	
WWEQ24 WWEN12 WWEN7	ESSLEMONT QUOKKA Q24 ^{PV} HBR	+72 89% 56	+5.2	+1.6	-4.7	+1.4	+41	+79	+91	+50	+16	+3.6	-8.0	+62	+16.8	+1.3	+0.4	+2.3	+2.4	+0.93	+27	+0.78	+0.88	+0.96	\$279	\$408	
Breed Average EBVs		+81.	+2.5	+3.2	-4.6	+3.8	+52	+94	+121	+103	+18	+2.3	-5.1	+69	+6.9	+0.1	-0.2	+0.4	+2.6	+0.24	+21	+0.83	+0.96	+1.01	+212	+361	

Angus Australia - MSA Marbling Research Breeding Values

Date: May 1, 2026

Page: 5

Ident	Name																										
Sire Dam	Reg.	MSA MBL RBV	Calv-Ease		Birth		Growth			Maternal			Fert			Carcase					Feed	Temp	Structural		Selection Index		
			Dir	Dtrs	GL	BW	200	400	600	MCW	Milk	SS	DC	CW	EMA	Rib	P8	RBY	IMF	NFI-F	Doc	Claw	Angle	Leg	\$A	\$A-L	
WWE21S6 NGMN418 WWEN7	ESLEMONT SEAN S6 ^{PV} HBR	+176 89% 5	+4.8 70% 34	+6.1 65% 23	-5.7 94% 33	+2.7 91% 27	+56 91% 31	+98 92% 41	+113 92% 70	+92 87% 67	+13 82% 80	+4.4 83% 4	-7.6 59% 8	+76 89% 30	+17.0 88% 1	+1.7 88% 17	-0.3 89% 51	+1.5 79% 5	+5.3 90% 6	+0.57 83% 82	+27 89% 27	+1.08 84% 90	+1.26 84% 96	+1.22 80% 94	\$312 1	\$482 1	
WWE22T2 CSWQ011 WWEQ23	ESLEMONT TESLA T2 ^{PV} HBR	+246 77% 1	+8.5 73% 7	+6.9 66% 16	-9.1 95% 4	+1.2 93% 8	+59 92% 20	+102 90% 28	+134 89% 25	+105 86% 46	+18 80% 46	+3.9 88% 7	-6.9 55% 14	+77 81% 29	+3.1 79% 87	-1.0 79% 72	-2.3 80% 82	-0.9 73% 96	+7.4 81% 1	+0.01 72% 26	+33 89% 12	+0.56 83% 7	+1.00 83% 58	+0.98 79% 38	\$265 7	\$440 5	
WKG22T2 USA19418329 WKG24	GANDY FAIR N SQUARE T2 ^{SV} HBR	-1 73% 95	+8.0 74% 9	+2.8 60% 60	-11.4 93% 1	+2.3 92% 20	+55 91% 38	+102 91% 29	+126 91% 41	+66 86% 93	+22 77% 22	+1.7 81% 68	-8.4 47% 4	+68 79% 54	+0.3 78% 98	+4.5 79% 1	+5.3 79% 2	-1.3 72% 99	+1.3 79% 79	+0.50 63% 77	+37 88% 6	+0.82 81% 47	+0.78 81% 12	+0.86 74% 11	\$254 12	\$400 23	
WKG23U120 USA19955191 WKGR98	GANDY MAN IN BLACK U120 ^{SV} HBR	+138 69% 16	+7.1 71% 14	+6.4 57% 20	-5.4 92% 37	+2.5 89% 23	+66 88% 6	+118 84% 4	+145 84% 10	+128 81% 16	+20 75% 30	+4.0 79% 7	-7.7 41% 7	+88 74% 8	+2.1 69% 93	+0.3 70% 43	-0.3 70% 51	-1.1 61% 98	+4.4 74% 14	+0.62 61% 85	+29 83% 21	+0.96 73% 75	+1.06 73% 72	+1.00 63% 44	\$260 9	\$459 2	
USA18217198 USA17354178 USA16934264	G A R ASHLAND ^{PV} HBR	+82 95% 48	+2.8 97% 53	+4.4 89% 42	-5.9 99% 30	+3.2 99% 36	+65 99% 7	+114 99% 8	+144 99% 11	+117 98% 29	+16 98% 59	+1.4 99% 78	-2.6 83% 92	+86 97% 11	+13.0 96% 5	-2.5 97% 93	-2.2 97% 80	+1.1 95% 13	+2.5 96% 50	+0.16 91% 41	+12 99% 84	+1.20 99% 97	+1.12 99% 83	+0.86 98% 11	\$254 13	\$416 14	
USA16295688 USA13009379 USA15129456	G A R PROPHET ^{SV} HBR	+119 97% 24	+3.0 98% 51	+5.9 95% 25	-0.6 99% 95	+3.8 99% 50	+67 99% 5	+108 99% 16	+133 99% 27	+86 99% 75	+22 99% 20	+0.6 99% 94	-5.3 91% 42	+70 98% 48	+3.9 97% 82	-0.3 98% 57	-1.2 98% 67	-1.0 97% 97	+4.8 97% 10	+0.81 94% 94	+26 99% 30	+1.02 99% 84	+0.82 99% 17	+0.92 98% 22	\$266 6	\$413 15	
USA18690054 USA17965471 USA18054344	GB FIREBALL 672 ^{PV} HBR	+177 93% 5	+2.3 96% 57	+7.6 86% 10	-4.8 99% 47	+2.5 99% 23	+61 99% 15	+99 99% 35	+128 99% 36	+121 98% 23	+18 98% 44	+2.7 98% 31	-6.5 76% 20	+73 96% 39	+14.1 95% 3	-2.9 95% 95	-4.9 95% 98	+0.9 93% 19	+5.3 95% 6	+0.55 88% 81	+12 99% 83	+1.06 99% 88	+0.96 99% 48	+0.80 98% 5	\$266 7	\$440 5	
QBV21S073 USA19199070 QBVJ018	GLENISA PATENT S073 ^{SV} HBR	+50 72% 71	+3.6 71% 45	+4.4 57% 42	-5.0 93% 44	+5.4 92% 82	+64 89% 8	+115 89% 7	+139 89% 18	+130 84% 14	+15 77% 70	+2.6 80% 35	-5.1 43% 47	+74 77% 36	+3.3 74% 86	-0.9 76% 70	+0.0 76% 46	-0.3 68% 83	+1.9 77% 65	-0.12 62% 16	+22 84% 44	+0.92 76% 68	+0.86 77% 25	+1.00 68% 44	\$223 41	\$403 21	
QBGH221 BNAD145 QBGD80	GLENOCH HINMAN H221 ^{SV} HBR	+155 90% 10	+7.3 84% 13	-3.3 76% 94	-2.8 97% 77	+2.8 97% 28	+54 96% 43	+94 96% 53	+126 96% 40	+111 92% 36	+19 94% 38	+0.8 95% 91	-4.2 70% 68	+84 92% 15	+6.9 91% 49	-2.4 91% 92	-5.3 92% 99	+0.8 88% 24	+5.4 92% 5	-0.29 85% 7	+8 87% 91	+0.82 89% 47	+0.78 89% 12	+1.04 85% 56	\$221 43	\$368 48	
DKK22T2 VLYM518 NKLF143	HARDHAT M518 TATUM T2 ^{PV} HBR	+130 78% 19	-5.8 77% 95	-0.3 68% 84	-9.8 93% 3	+4.5 91% 65	+64 90% 9	+106 90% 19	+141 89% 15	+134 85% 11	+16 80% 61	+1.0 82% 88	-1.3 58% 99	+73 79% 39	+7.5 80% 42	-2.8 80% 95	-2.3 80% 82	-0.1 74% 74	+4.0 81% 20	-0.01 72% 24	+28 86% 23	+0.74 82% 30	+0.68 82% 4	+1.02 78% 50	\$184 79	\$324 79	
NHZF1023 VTMB1 NHZB723	HAZELDEAN F1023 ^{SV} APR	+187 93% 4	+5.1 93% 31	+0.9 84% 77	-2.6 98% 80	+3.1 98% 34	+39 98% 95	+72 98% 95	+85 98% 98	+62 97% 95	+13 97% 81	+3.5 97% 13	-5.5 79% 38	+49 96% 93	+8.5 94% 31	+2.4 94% 9	-0.2 95% 50	+0.1 91% 64	+5.7 94% 4	+1.28 89% 99	+12 98% 83	+0.46 97% 2	+1.02 97% 63	+1.06 95% 62	\$212 53	\$334 73	
NHZQ1229 NHZF1023 NHZJ823	HAZELDEAN Q1229 ^{PV} APR	+112 90% 29	+2.6 84% 55	+4.8 70% 37	-3.1 98% 73	+4.5 98% 65	+56 97% 34	+100 98% 33	+124 96% 44	+75 91% 87	+18 88% 43	+4.3 97% 4	-7.5 66% 9	+76 92% 30	+11.7 90% 9	+0.0 90% 50	-2.4 90% 83	+0.4 82% 46	+3.9 92% 21	+0.96 85% 97	+29 98% 21	+0.66 96% 17	+0.98 97% 53	+0.96 92% 32	\$277 4	\$424 10	
NHZQ319 NHZM586 NHZL1175	HAZELDEAN Q319 ^{PV} APR	+142 90% 14	+5.0 83% 32	+9.6 69% 2	-8.5 98% 6	+2.2 98% 19	+54 97% 43	+104 97% 24	+140 96% 16	+137 91% 9	+14 88% 77	+3.1 97% 20	-11.2 65% 1	+81 92% 20	+2.1 89% 93	+2.6 89% 8	+0.9 90% 31	-1.0 81% 97	+4.9 91% 9	+0.64 83% 87	+28 97% 22	+0.70 96% 23	+0.96 96% 48	+1.10 88% 73	\$261 9	\$476 1	
Breed Average EBVs		+81.	+2.5	+3.2	-4.6	+3.8	+52	+94	+121	+103	+18	+2.3	-5.1	+69	+6.9	+0.1	-0.2	+0.4	+2.6	+0.24	+21	+0.83	+0.96	+1.01	+212	+361	

Angus Australia - MSA Marbling Research Breeding Values

Date: May 1, 2026

Page: 6

Ident	Name																										
Sire Dam	Reg.	MSA MBL RBV	Calv-Ease		Birth		Growth			Maternal			Fert			Carcase				Feed	Temp	Structural		Selection Index			
			Dir	Dtrs	GL	BW	200	400	600	MCW	Milk	SS	DC	CW	EMA	Rib	P8	RBY	IMF	NFI-F	Doc	Claw	Angle	Leg	\$A	\$A-L	
NHZR265 NHZM182 NHZN294	HAZELDEAN RENEGADE R265 ^{PV} APR	+107 77% 32	+5.9	+1.5	+0.1	+3.9	+51	+99	+132	+121	+18	+1.6	-2.5	+69	+6.0	-1.4	-2.4	-0.2	+4.0	-0.07	+28	+0.66	+0.84	+1.00	\$181	\$339	
NHZ21S2055 NORL519 NHZK458	HAZELDEAN SYNERGY S2055 ^{PV} APR	+58 76% 66	+8.6	+8.4	-12.2	+1.8	+61	+109	+147	+126	+26	+2.7	-7.6	+84	+8.3	-0.5	-2.2	+0.4	+2.6	+0.10	+15	+0.30	+0.48	+0.82	\$260	\$453	
DOJ22T194 CSWQ011 DOJK187	HIGHRENT QUARTERBACK T194 APR	+189 75% 3	+7.0	+7.7	-6.7	+2.3	+58	+104	+148	+93	+33	+3.0	-5.6	+85	+4.0	+1.4	+1.9	-1.8	+6.6	-0.35	+34	+0.54	+1.12	+0.98	\$259	\$422	
CBJ21S13 CSWQ011 ASHP141	HILLS VIEW SAM S13 ^{PV} HBR	+141 77% 14	+5.3	+3.8	-3.4	+3.5	+57	+113	+146	+123	+22	+2.3	-3.5	+71	+5.0	+0.4	+0.8	-0.6	+4.1	-0.04	+29	+0.62	+0.70	+1.02	\$223	\$397	
USA20427019 USA17882682 USA19200093	HOOVER ABOUT IT ^{PV} HBR	+46 77% 74	+0.2	+5.6	-2.1	+1.1	+54	+103	+134	+94	+24	+2.6	-3.8	+77	+9.1	+2.4	+2.9	-0.1	+2.1	+0.73	+21	+0.68	+0.72	+0.74	\$224	\$369	
NZE13300018 WWEL3 NZE13300116373	KAKAHU PIVOTAL 18004 ^{PV} HBR	+177 88% 5	+4.1	+1.1	-6.8	+3.8	+54	+99	+119	+66	+27	+3.5	-8.7	+83	+9.1	+0.9	+1.5	+0.4	+4.5	+0.67	+0	+0.70	+0.88	+1.06	\$303	\$448	
FCJ21S132 USA18170041 NZE21180117268	KAKAHU S132 ^{PV} HBR	+162 77% 8	+1.8	+4.5	-1.5	+3.6	+55	+98	+127	+83	+22	+3.0	-3.6	+71	+7.1	-3.7	-3.8	+0.2	+4.5	-0.33	+33	+0.82	+0.98	+0.78	\$227	\$359	
GXNQ209 USA18463791 VLYL1327	KELLY ANGUS QUINN Q209 ^{SV} HBR	+34 87% 81	+7.6	+9.6	-7.1	+2.4	+66	+120	+143	+124	+28	+0.6	-10.7	+82	+5.0	-2.7	-3.6	+0.4	+2.3	-0.25	+37	+1.34	+1.24	+1.20	\$297	\$503	
NDIP481 USA17354145 NDIL236	KENNY'S CREEK PINNACLE P481 HBR	+163 89% 8	+1.5	+0.3	-3.7	+3.1	+48	+88	+118	+67	+23	+0.5	-3.0	+77	+4.4	+1.4	+1.4	-1.4	+6.3	+1.25	+18	+0.94	+0.96	+0.88	\$210	\$321	
KILK18 USA16417285 USA15107929	KILLAIN ALASKA K18 ^{PV} HBR	-23 86% 98	-12.5	-7.0	-0.3	+6.8	+66	+120	+161	+168	+17	+4.0	-2.3	+82	+6.7	-3.2	-5.0	+1.0	-1.0	-0.61	+31	+1.06	+0.76	+1.00	\$119	\$268	
BLAP130 SRKK306 BLAK113	KNOWLA PACKER P130 ^{PV} HBR	+53 85% 69	+3.6	+2.1	-2.6	+4.6	+56	+101	+133	+109	+11	+1.1	-5.4	+78	+8.5	-0.3	-1.0	+0.8	+1.8	+0.03	+28	+0.78	+1.16	+0.96	\$235	\$394	
BLAP91 HIOG18 BLAL06	KNOWLA PEPPER P91 ^{PV} HBR	+43 91% 76	+6.3	+1.6	-5.0	+3.8	+60	+116	+145	+169	+8	+1.8	-9.6	+66	+8.6	+2.8	+0.0	+0.6	+2.4	+0.43	-2	+0.94	+0.98	+1.00	\$258	\$485	
BLAR190 BLAN127 BLAP172	KNOWLA REVOLUTION R190 ^{PV} HBR	+152 83% 11	+10.8	+5.8	-11.8	+0.4	+39	+80	+102	+66	+24	+2.6	-4.0	+57	+14.5	+3.6	+2.8	+0.1	+5.0	+0.77	+40	+0.68	+0.98	+0.98	\$226	\$356	
Breed Average EBVs		+81.	+2.5	+3.2	-4.6	+3.8	+52	+94	+121	+103	+18	+2.3	-5.1	+69	+6.9	+0.1	-0.2	+0.4	+2.6	+0.24	+21	+0.83	+0.96	+1.01	+212	+361	

Angus Australia - MSA Marbling Research Breeding Values

Date: May 1, 2026

Page: 7

Ident	Name																										
Sire Dam	Reg.	MSA MBL RBV	Calv-Ease		Birth		Growth			Maternal			Fert			Carcase				Feed	Temp	Structural		Selection Index			
			Dir	Dtrs	GL	BW	200	400	600	MCW	Milk	SS	DC	CW	EMA	Rib	P8	RBY	IMF	NFI-F	Doc	Claw	Angle	Leg	\$A	\$A-L	
BLA21S48 USA18837398 BLAL21	KNOWLA SO RIGHT S48 ^{PV} HBR	+181 89% 4	+6.9 86% 16	+0.8 75% 77	-5.1 99% 42	+3.2 99% 36	+55 98% 37	+100 98% 34	+130 98% 31	+114 94% 33	+16 88% 65	+2.4 98% 42	-4.6 59% 59	+81 91% 20	+7.1 90% 46	+0.6 90% 36	+2.4 90% 13	-0.4 82% 86	+4.9 91% 91	+0.22 82% 48	+28 98% 24	+0.78 97% 38	+1.04 97% 68	+1.00 95% 44	\$235 28	\$400 23	
BLA21S44 BLAN127 BLAQ69	KNOWLA SUPERIOR S44 ^{PV} HBR	+119 76% 24	+8.2 71% 8	+2.3 61% 65	-8.5 96% 6	+1.6 95% 12	+52 92% 50	+104 90% 25	+137 89% 20	+133 86% 12	+7 79% 99	+1.7 84% 68	-4.4 50% 63	+76 80% 31	+8.1 77% 35	-0.3 78% 57	+1.6 79% 22	+0.3 71% 52	+3.6 80% 26	+0.31 68% 58	+41 88% 3	+0.46 85% 2	+0.78 85% 12	+0.84 81% 9	\$224 39	\$406 19	
BLA22T72 BLAN127 BLAN14	KNOWLA TOP NOTCH T72 ^{PV} HBR	+103 75% 34	+6.9 68% 16	+1.3 60% 74	-8.2 92% 8	+3.3 90% 39	+58 89% 23	+109 89% 14	+145 88% 10	+146 84% 5	+9 78% 95	+3.7 81% 10	-4.0 49% 72	+81 78% 19	+7.1 77% 46	-1.2 77% 76	-1.2 78% 67	+0.7 70% 28	+3.0 79% 39	-0.52 66% 2	+26 85% 29	+0.72 81% 27	+0.84 81% 21	+1.08 78% 68	\$215 49	\$404 20	
NZCP117 USA17960722 NZCM67	KO B074 BEAST MODE P117 ^{PV} HBR	+129 89% 20	+1.5 83% 64	+5.6 72% 28	-5.3 98% 39	+1.8 98% 14	+59 96% 22	+99 97% 37	+121 96% 51	+109 94% 40	+10 89% 95	+2.2 92% 49	-6.0 63% 28	+53 91% 89	+1.5 91% 95	+1.1 90% 26	+0.1 91% 45	-1.2 85% 99	+4.0 91% 20	+0.50 82% 77	+12 91% 82	+0.60 92% 10	+0.50 92% 1	+0.70 88% 1	\$215 50	\$375 41	
TFA21S1944 NORL519 TFAN829	LANDFALL SUMMIT S1944 ^{PV} HBR	+141 79% 15	+5.9 76% 24	+5.4 69% 30	-6.7 98% 20	+3.0 98% 32	+51 97% 58	+105 95% 21	+137 94% 20	+115 88% 31	+25 81% 9	+2.4 94% 92	-6.0 60% 28	+71 83% 44	+9.7 83% 83	+1.6 83% 18	+1.9 83% 18	+0.0 78% 69	+4.2 84% 78	+0.51 73% 78	+25 96% 32	+0.66 90% 17	+0.74 91% 7	+0.84 86% 9	\$251 14	\$430 8	
VLYL483 HKFJ5 VLYH221	LAWSONS LINKEDIN L483 ^{SV} HBR	+62 90% 63	+4.3 84% 38	-6.8 78% 99	-1.1 98% 92	+4.3 98% 61	+58 97% 23	+108 97% 15	+152 97% 5	+144 95% 6	+24 96% 10	+4.0 94% 7	-5.7 69% 34	+101 93% 2	+9.0 90% 26	-1.5 89% 81	+1.9 91% 18	+0.3 85% 52	+2.2 91% 58	-0.20 83% 11	+19 89% 58	+1.04 85% 86	+0.86 85% 25	+0.92 81% 22	\$219 45	\$400 23	
VLYQ44 VLYM518 VLYK914	LAWSONS MIRACULOUS Q44 ^{PV} HBR	+94 88% 40	+5.5 80% 27	-0.2 70% 83	-7.7 97% 11	+3.6 96% 45	+50 94% 62	+92 94% 58	+108 94% 78	+102 92% 52	+12 89% 86	+3.1 91% 20	-4.0 63% 72	+44 90% 97	+18.0 88% 1	-0.2 88% 55	+0.0 89% 46	+1.9 81% 2	+1.7 90% 70	+0.19 82% 44	+35 85% 9	+0.94 85% 71	+0.94 85% 43	+0.96 81% 32	\$228 35	\$380 38	
VLYM518 USA17354145 VLYH229	LAWSONS MOMENTOUS M518 HBR	+203 95% 2	-0.9 98% 80	+1.6 93% 71	-5.1 99% 42	+3.9 99% 52	+50 99% 59	+91 99% 60	+115 99% 64	+80 99% 82	+23 99% 14	+2.7 99% 31	-1.7 87% 98	+53 98% 89	+11.9 97% 8	-1.2 97% 76	-0.1 97% 48	+0.3 96% 52	+5.8 97% 3	+0.61 92% 85	+36 99% 7	+0.84 99% 51	+1.00 99% 58	+1.16 99% 86	\$220 44	\$336 72	
VLYR4010 USA17354145 VLYP4005	LAWSONS ROCKY R4010 ^{PV} HBR	+127 87% 21	+6.1 84% 22	+8.1 76% 7	-4.6 99% 50	+2.5 99% 23	+54 98% 41	+96 98% 46	+122 98% 50	+81 97% 81	+21 95% 25	+2.7 98% 61	-4.5 62% 61	+79 92% 23	+12.2 90% 7	+1.4 90% 21	+0.9 90% 31	+0.4 84% 46	+4.3 90% 15	+1.43 79% 99	+19 99% 59	+0.98 99% 78	+1.00 99% 58	+1.10 98% 73	\$265 7	\$414 15	
VLYR1217 USA18217198 VLYN976	LAWSONS ROMULUS R1217 ^{PV} HBR	+151 88% 11	+2.0 77% 60	+7.0 68% 15	-5.1 92% 42	+4.0 91% 54	+65 90% 7	+110 90% 13	+152 91% 5	+126 87% 18	+19 81% 41	+1.4 84% 78	-1.9 60% 97	+86 88% 12	+11.8 87% 9	-3.8 86% 99	-5.0 87% 98	+1.4 79% 6	+3.9 89% 21	+0.66 82% 88	+15 86% 73	+1.18 84% 96	+1.08 84% 76	+1.00 80% 44	\$249 15	\$411 16	
MAN22T221 TFAQ494 MANR461	MANDAYEN MAINLAND T221 ^{PV} HBR	+119 73% 25	+10.0 75% 2	+7.9 63% 9	-6.9 98% 18	+1.4 98% 10	+50 96% 59	+91 89% 62	+124 88% 44	+79 84% 83	+25 78% 9	+3.4 85% 14	-5.8 48% 32	+79 78% 23	+14.3 74% 3	-1.1 74% 74	-1.1 75% 65	+1.3 66% 8	+3.5 77% 28	+0.78 66% 93	+29 93% 20	+0.76 70% 34	+0.88 71% 29	+0.98 71% 38	\$269 6	\$419 13	
CHK21S093 USA19266718 CHKN068	MANEROO PARTNERS S093 ^{SV} APR	+135 76% 17	+1.9 72% 61	+1.2 64% 74	-2.9 92% 76	+4.7 93% 69	+61 90% 15	+101 90% 32	+123 89% 47	+112 85% 35	+15 79% 71	+3.1 81% 20	-6.2 53% 25	+72 79% 42	+14.4 78% 3	-2.5 79% 93	-3.6 79% 93	+1.3 73% 8	+3.9 80% 21	+0.29 68% 56	+31 84% 15	+1.02 79% 84	+1.04 79% 68	+1.06 75% 62	\$264 7	\$426 10	
NMMG18 NZE12170004408 NMMD85	MILLAH MURRAH HIGHLANDER HBR	+14 90% 91	-0.4 85% 77	-2.6 75% 93	-3.1 97% 73	+4.8 96% 71	+49 94% 66	+86 94% 75	+109 94% 77	+86 91% 75	+18 88% 45	+3.8 90% 8	-2.3 66% 95	+77 91% 28	+10.7 90% 14	-3.6 90% 98	-1.6 91% 73	+2.1 84% 1	-0.2 92% 97	-0.02 85% 23	+16 91% 71	+0.76 84% 34	+0.94 85% 43	+1.00 80% 44	\$176 85	\$290 91	
Breed Average EBVs		+81.	+2.5	+3.2	-4.6	+3.8	+52	+94	+121	+103	+18	+2.3	-5.1	+69	+6.9	+0.1	-0.2	+0.4	+2.6	+0.24	+21	+0.83	+0.96	+1.01	+212	+361	

Angus Australia - MSA Marbling Research Breeding Values

Date: May 1, 2026

Page: 8

Ident	Name																												
Sire Dam	Reg.	MSA MBL RBV	Calv-Ease		Birth		Growth			Maternal			Fert		Carcase					Feed	Temp	Structural		Selection Index					
			Dir	Dtrs	GL	BW	200	400	600	MCW	Milk	SS	DC	CW	EMA	Rib	P8	RBY	IMF	NFI-F	Doc	Claw	Angle	Leg	\$A	\$A-L			
NMMK35 NZE469 NMMG41	MILLAH MURRAH KINGDOM K35 HBR	-44 94% 99	-9.8	-4.5	-1.9	+8.8	+56	+100	+138	+149	+11	+0.9	-5.9	+63	+7.2	+0.0	-0.1	+1.0	-0.9	-0.72	+29	+0.86	+1.32	+1.22	\$152	\$300			
NMMK42 NGMT30 NMMH4	MILLAH MURRAH KLOONEY K42 HBR	+78 95% 51	+2.8	+0.9	-5.9	+5.6	+47	+85	+108	+91	+21	+2.2	-5.5	+66	+6.7	-1.5	-3.3	+1.2	+2.1	+0.08	+17	+0.84	+0.92	+1.04	\$198	\$332			
NMML133 USA17091363 NMMH49	MILLAH MURRAH LOCH UP L133 HBR	+44 94% 75	+6.2	+4.7	-5.4	+4.8	+59	+100	+131	+102	+25	+2.1	-3.0	+79	+1.7	-2.3	-3.9	-0.6	+2.0	-0.01	+32	+0.68	+1.06	+1.14	\$177	\$323			
NMMM308 NZE14647008839 NMMH331	MILLAH MURRAH MILESTONE HBR	+82 88% 48	+6.5	+5.3	-6.8	+4.6	+41	+78	+88	+73	+14	+2.7	-4.3	+40	+4.2	+2.4	+4.4	-0.4	+2.5	+0.20	+19	+0.86	+0.98	+1.22	\$182	\$312			
NJWH283 NJWF189 NJWE51	MILWILLAH ELSOM H283 PV HBR	+51 90% 70	+0.3	-6.0	-1.8	+3.9	+47	+84	+123	+111	+21	+1.9	-1.3	+77	+8.8	-2.3	-2.4	+1.3	+1.4	+0.36	+19	+0.70	+0.80	+1.04	\$145	\$266			
NJWE158 NZEE230 VTMX114	MILWILLAH LAD E158 SV HBR	+138 90% 16	-3.2	-7.7	-8.1	+7.8	+41	+78	+105	+106	+8	+2.0	-5.1	+43	+8.7	-0.7	-5.1	+1.4	+3.3	+0.31	+13	+0.82	+0.86	+0.72	\$159	\$279			
BWFQ33 USA18181757 BWFN9	MOOGENILLA QUINELLA Q33 PV HBR	+159 92% 9	+2.3	+8.9	-6.2	+3.9	+59	+114	+145	+85	+29	+3.0	-4.0	+93	+9.2	-0.4	+0.7	-0.6	+5.2	+0.40	+32	+0.88	+0.92	+0.86	\$270	\$421			
NW121S03 NMMP15 NWIM17	MORTON'S SUPERTROOPER S03 HBR	+55 73% 68	+3.6	+7.3	-7.3	+4.2	+57	+107	+145	+122	+18	+2.9	-4.5	+95	+12.4	-3.3	-4.2	+1.5	+2.0	+0.54	+19	+0.86	+0.96	+1.10	\$237	\$409			
CSWP036 USA17236055 CSWL123	MURDEDUKE BLACK PEARL HBR	+204 91% 2	+0.9	+0.5	-8.4	+4.8	+49	+94	+129	+118	+23	+3.4	-7.6	+58	+0.3	+0.4	-1.1	-1.1	+6.4	+0.46	+18	+0.84	+1.20	+1.22	\$209	\$372			
CSWK428 VTME343 CSWE175	MURDEDUKE KICKING K428 PV HBR	+26 91% 86	+7.7	+9.9	-7.5	+1.7	+48	+94	+116	+89	+24	+3.5	-6.1	+67	+2.6	-0.4	-3.1	+0.3	+0.7	-0.07	+39	+0.86	+1.02	+1.16	\$188	\$344			
CSW22T115 VTMP1479 CSWR082	MURDEDUKE PHEASANTRY HBR	+184 75% 4	+1.7	+3.9	-6.4	+4.9	+54	+103	+129	+125	+28	+3.1	-8.4	+77	+5.5	+1.5	+1.3	-1.2	+6.9	+0.77	+21	+0.34	+0.98	+1.20	\$250	\$432			
CSWQ011 VLYM518 CSWN026	MURDEDUKE QUARTERBACK HBR	+174 92% 6	+6.7	+2.9	-9.4	+2.9	+54	+101	+136	+102	+25	+4.0	-5.5	+79	+4.7	+1.3	+2.8	-1.2	+5.3	+0.25	+22	+0.68	+1.04	+1.06	\$236	\$400			
NURM204 USA16956101 NURJ43	MURRAY PROCEED M204 PV HBR	+254 91% 1	-6.5	+6.0	-4.0	+4.4	+61	+105	+144	+134	+19	+2.2	-3.4	+89	+14.5	-4.8	-6.2	+0.9	+6.6	+0.09	+22	+0.98	+0.74	+0.90	\$232	\$385			
Breed Average EBVs		+81.	+2.5	+3.2	-4.6	+3.8	+52	+94	+121	+103	+18	+2.3	-5.1	+69	+6.9	+0.1	-0.2	+0.4	+2.6	+0.24	+21	+0.83	+0.96	+1.01	+212	+361			

Angus Australia - MSA Marbling Research Breeding Values

Date: May 1, 2026

Page: 9

Ident	Name																										
Sire Dam	Reg.	MSA MBL RBV	Calv-Ease		Birth		Growth			Maternal			Fert			Carcase					Feed	Temp	Structural		Selection Index		
			Dir	Dtrs	GL	BW	200	400	600	MCW	Milk	SS	DC	CW	EMA	Rib	P8	RBY	IMF	NFI-F	Doc	Claw	Angle	Leg	\$A	\$A-L	
SFNL21 NZE10322010609 SFNH65	NAMPARA LIBERTY L21 ^{SV} HBR	-74 92% 99	-4.4 89% 92	-4.0 76% 96	-6.5 98% 22	+8.7 98% 99	+67 97% 4	+112 97% 10	+149 97% 7	+164 95% 2	+19 96% 37	+2.8 65% 28	-0.9 94% 99	+79 92% 24	+7.4 90% 43	-2.0 93% 88	-0.9 88% 62	+1.7 93% 3	-2.4 87% 99	-0.71 87% 1	+21 95% 48	+0.92 92% 68	+0.90 92% 33	+0.98 88% 38	\$143 96	\$300 89	
WLG P5 USA18229425 WLG M24	NARANDA PIMP P5 ^{SV} APR	+122 88% 23	+10.2 78% 2	+9.3 67% 3	-11.6 97% 1	+1.4 95% 10	+51 95% 54	+97 94% 42	+127 94% 39	+90 90% 70	+23 86% 16	+1.7 88% 68	-3.3 57% 84	+82 90% 18	+7.1 87% 46	+1.6 87% 18	+2.9 88% 9	-0.3 78% 83	+3.7 90% 24	+0.29 82% 56	-2 90% 99	+0.70 87% 23	+0.76 87% 9	+1.06 82% 62	\$231 32	\$384 35	
SKOJ6 VTME343 NZCE115	NEWLYN PARK EMPEROR J6 ^{PV} HBR	+17 87% 89	-5.4 79% 94	-5.4 71% 98	-6.7 93% 20	+7.4 92% 98	+66 91% 6	+113 91% 9	+143 91% 13	+160 89% 2	+8 85% 97	+1.5 85% 75	-3.9 65% 74	+78 87% 27	+8.2 86% 34	-1.2 86% 76	-1.7 87% 74	+1.3 81% 8	+0.4 88% 93	-0.71 80% 1	+13 86% 81	+1.08 85% 90	+0.84 85% 21	+0.74 81% 2	\$189 76	\$355 59	
NZE21095018 HIOE7 NZE21095112H49	NGAPUTAH I P206 ^{PV} HBR	+133 89% 18	+8.9 82% 5	+4.1 75% 45	-1.3 93% 91	+0.3 97% 4	+42 96% 89	+84 96% 80	+97 95% 92	+71 93% 90	+25 89% 9	+2.8 95% 28	-8.5 69% 4	+51 91% 91	+5.5 90% 65	+0.0 90% 50	-2.2 90% 80	+1.0 84% 16	+4.0 91% 20	+0.16 84% 41	+17 90% 67	+0.98 87% 78	+1.14 88% 86	+1.08 84% 68	\$245 19	\$389 31	
NZE21095020 USA17960722 NZE2109510845	NGAPUTAH I R160 ^{SV} HBR	+108 79% 31	-0.9 78% 80	+4.4 68% 42	-0.8 96% 94	+4.9 97% 73	+64 96% 8	+109 95% 14	+130 93% 31	+114 89% 33	+18 84% 49	+4.5 91% 3	-4.7 59% 56	+74 83% 35	+5.3 84% 84	-1.3 84% 78	-1.2 84% 67	+0.2 79% 58	+3.1 84% 36	-0.16 71% 13	+31 92% 15	+0.78 89% 38	+0.80 88% 14	+0.98 84% 38	\$229 33	\$387 32	
USA16981588 USA16381311 USA16408070	PA FULL POWER 1208 ^{PV} HBR	+110 93% 30	-4.9 95% 93	-3.8 87% 95	-4.7 99% 49	+3.8 98% 50	+52 98% 49	+98 98% 39	+121 98% 52	+76 98% 86	+14 98% 76	+2.0 98% 57	-1.7 76% 98	+71 96% 44	+12.8 95% 5	-1.5 95% 81	+0.7 95% 35	+1.0 93% 16	+3.0 95% 39	+0.83 88% 94	+20 98% 52	+1.24 98% 98	+0.94 98% 43	+0.76 92% 3	\$219 45	\$323 79	
HKFK146 HKFH114 HKFG42	PARINGA RED PILBARA K146 ^{PV} HBR	+197 88% 3	+0.4 75% 72	-0.8 63% 86	-0.5 94% 95	+2.5 92% 23	+31 91% 99	+59 91% 99	+67 87% 99	+30 83% 26	+21 84% 71	+1.6 55% 16	-6.8 88% 98	+40 88% 50	+6.8 87% 25	+1.2 88% 12	+2.6 81% 83	-0.3 90% 2	+6.3 82% 94	+0.81 84% 77	+14 80% 30	+0.74 80% 63	+1.02 80% 86	+1.16 73% 86	\$213 52	\$300 89	
SMPG357 VTMB1 SMPD245	PATHFINDER GENESIS G357 ^{PV} HBR	+13 95% 91	-1.2 97% 82	+3.1 91% 57	-7.1 99% 16	+6.6 99% 94	+62 99% 13	+109 99% 14	+148 99% 8	+139 98% 8	+25 98% 8	+4.4 98% 4	-8.4 87% 4	+95 97% 4	+13.7 96% 4	+0.1 97% 48	-0.6 97% 57	+1.3 95% 8	+0.6 96% 90	+0.59 91% 84	+29 99% 22	+0.84 98% 51	+1.08 98% 76	+0.80 97% 5	\$252 14	\$437 6	
SMPK22 SMPG357 SMPH756	PATHFINDER COMPLETE K22 ^{SV} HBR	+73 93% 55	+9.8 93% 2	+7.2 83% 13	-9.1 99% 4	+0.9 98% 6	+41 98% 92	+74 98% 94	+96 98% 92	+52 97% 98	+25 98% 8	+2.9 98% 25	-7.9 76% 6	+51 95% 91	+6.9 94% 49	+3.5 94% 3	+5.7 95% 1	+0.2 93% 58	+2.4 95% 53	+0.56 88% 82	+25 97% 32	+0.50 96% 4	+0.88 97% 29	+0.68 95% 1	\$247 17	\$378 39	
SMPM651 VTMG67 SMPH66	PATHFINDER MASTERPIECE HBR	+74 87% 54	+3.4 81% 47	+4.1 73% 45	-6.3 92% 25	+5.0 95% 75	+55 93% 36	+102 93% 28	+127 93% 38	+137 89% 9	+21 89% 26	+3.5 89% 13	-7.8 65% 7	+53 88% 89	+10.0 87% 18	-1.7 88% 84	-4.2 81% 96	+1.7 89% 3	+1.4 81% 77	-0.25 81% 9	+33 83% 12	+1.02 77% 84	+1.20 77% 92	+1.20 74% 92	\$226 37	\$413 15	
SMPN56 HIOG18 SMPL179	PATHFINDER NUCLEUS N56 ^{SV} HBR	+52 91% 70	+4.5 83% 37	+2.8 72% 60	-3.8 96% 63	+5.2 97% 78	+59 96% 20	+106 96% 20	+136 92% 21	+134 93% 11	+17 94% 53	+4.5 65% 3	-6.6 92% 18	+75 91% 32	+12.7 90% 6	+0.6 91% 36	+1.3 84% 25	+0.9 92% 19	+1.7 86% 70	+0.37 86% 64	+6 90% 95	+0.76 87% 34	+0.82 87% 17	+0.84 82% 9	\$247 17	\$436 6	
SMPP516 SMPM558 SMPJ282	PATHFINDER PHAT CAT P516 ^{SV} HBR	+206 85% 2	+4.3 80% 38	+3.7 68% 50	-7.2 96% 15	+4.5 96% 65	+52 95% 52	+90 95% 65	+116 95% 63	+81 92% 81	+25 89% 8	+5.2 93% 1	-8.8 60% 3	+47 88% 95	+11.5 86% 10	-3.5 86% 98	-2.9 87% 88	+0.7 80% 28	+5.8 88% 3	+0.15 80% 40	+38 93% 5	+0.72 90% 27	+1.08 91% 76	+0.88 86% 14	\$284 2	\$437 6	
SMP22T9 CSWQ011 SMPQ1130	PATHFINDER QUARTERBACK T9 HBR	+195 78% 3	+5.4 74% 28	+4.5 69% 41	-7.9 90% 10	+2.2 93% 19	+47 92% 73	+92 90% 59	+123 90% 47	+75 87% 87	+30 81% 2	+4.2 88% 5	-4.0 57% 72	+70 81% 48	+16.7 79% 1	+0.0 80% 50	+0.7 80% 35	+1.1 73% 13	+4.9 82% 9	+0.70 73% 90	+18 83% 63	+0.58 66% 8	+1.00 66% 58	+0.90 66% 18	\$265 7	\$405 20	
Breed Average EBVs		+81.	+2.5	+3.2	-4.6	+3.8	+52	+94	+121	+103	+18	+2.3	-5.1	+69	+6.9	+0.1	-0.2	+0.4	+2.6	+0.24	+21	+0.83	+0.96	+1.01	+212	+361	

Angus Australia - MSA Marbling Research Breeding Values

Date: May 1, 2026

Page: 10

Ident	Name																										
Sire Dam	Reg.	MSA MBL RBV	Calv-Ease		Birth		Growth			Maternal			Fert		Carcase					Feed	Temp	Structural		Selection Index			
			Dir	Dtrs	GL	BW	200	400	600	MCW	Milk	SS	DC	CW	EMA	Rib	P8	RBY	IMF	NFI-F	Doc	Claw	Angle	Leg	\$A	\$A-L	
SMP22T756 NURM204 SMPN248	PATHFINDER TASMANIA T756 SV HBR	+238 80% 1	+2.6 73% 55	+6.8 63% 16	-5.0 99% 44	+2.2 98% 19	+63 98% 10	+106 97% 20	+129 96% 34	+100 88% 54	+20 80% 30	+2.9 95% 25	-5.7 56% 34	+76 83% 31	+6.6 85% 52	-1.0 84% 72	-2.4 85% 83	-0.3 79% 83	+7.3 85% 1	+0.02 72% 27	+19 93% 57	+0.78 68% 38	+0.92 68% 38	+1.04 67% 56	\$279 3	\$442 5	
USA20313395 USA19559741 USA19568610	PEAK STAPLETON PV HBR	+163 76% 8	-1.1 72% 81	+8.3 59% 6	-2.7 95% 78	+5.2 93% 78	+63 89% 10	+114 87% 8	+136 86% 22	+102 83% 52	+16 80% 59	+0.4 82% 96	-5.4 44% 40	+89 81% 8	+17.7 79% 1	+0.7 75% 34	+0.6 73% 36	+1.0 68% 16	+5.3 81% 6	+0.85 64% 95	+24 81% 38	+0.92 92% 68	+1.04 92% 68	+0.82 61% 7	\$317 1	\$478 1	
NZE41-97 NZE53195 NZE63988	PINEBANK WAIGROUP 41/97 # HBR	+15 95% 90	+2.6 96% 55	-3.9 91% 96	-3.5 98% 68	+3.6 99% 45	+37 98% 97	+64 98% 99	+76 98% 99	+50 98% 98	+18 98% 45	+0.9 98% 90	-4.9 89% 52	+17 97% 99	+5.3 96% 68	+1.3 96% 23	+0.2 96% 43	+0.9 95% 19	+1.1 96% 83	-0.02 90% 23	+33 93% 11	+0.26 89% 1	+0.90 89% 33	+0.96 84% 32	\$164 90	\$254 97	
USA20060473 USA19555171 USA18631711	POSS WINCHESTER PV HBR	+53 81% 69	+2.0 75% 60	+5.7 57% 27	-7.6 98% 12	+5.4 98% 82	+80 97% 1	+133 96% 1	+172 96% 1	+157 89% 3	+13 84% 82	+2.1 94% 53	-5.8 48% 32	+104 87% 1	+10.9 87% 13	-0.4 85% 60	-3.2 83% 90	+0.2 78% 58	+2.7 87% 46	-0.15 67% 14	+27 92% 26	+0.72 98% 27	+0.82 97% 17	+0.92 71% 22	\$285 2	\$493 1	
NLRE17 USA13058662 NAQW232	REILAND EVERITT E17 PV HBR	+107 90% 31	-5.4 88% 94	+3.0 79% 58	-1.3 96% 91	+5.0 97% 75	+51 96% 58	+87 96% 72	+119 96% 57	+88 94% 73	+16 94% 62	+4.4 92% 4	-3.3 70% 84	+62 92% 71	+10.0 91% 18	-2.0 91% 88	+0.6 87% 36	+1.0 87% 16	+1.7 92% 70	-0.43 84% 4	+13 88% 79	+1.08 87% 90	+0.92 87% 38	+0.98 83% 38	\$191 74	\$307 86	
NORE11 NGMY145 VLYY5	RENNYLEA EDMUND E11 PV HBR	+104 98% 33	+8.3 99% 7	+0.1 97% 82	-6.7 99% 20	+1.3 99% 9	+34 99% 99	+64 99% 99	+83 99% 98	+55 99% 97	+16 99% 63	+1.8 99% 64	-8.9 95% 2	+50 98% 92	+3.9 98% 82	+3.4 98% 4	+1.2 98% 27	-0.2 98% 79	+4.1 98% 18	+0.74 96% 91	+23 99% 41	+0.54 99% 6	+1.04 99% 68	+1.08 99% 68	\$207 59	\$327 77	
NORH708 NORC511 NORE176	RENNYLEA H708 PV APR	+268 95% 1	-6.6 93% 96	+3.7 87% 50	+1.3 98% 99	+4.4 98% 63	+46 98% 79	+100 98% 34	+127 98% 39	+130 98% 14	+11 97% 90	+2.3 98% 45	-3.4 84% 83	+71 96% 46	+12.3 96% 7	-3.1 96% 96	-6.6 96% 99	+2.0 94% 1	+7.3 96% 1	+0.59 93% 84	+22 98% 47	+0.66 98% 17	+0.66 98% 3	+0.94 97% 26	\$219 45	\$368 48	
NORK522 NORE11 NORF810	RENNYLEA KODAK K522 SV HBR	+142 93% 14	+8.4 95% 7	+8.2 86% 7	-4.7 99% 49	+1.3 99% 9	+44 98% 85	+82 98% 84	+107 98% 79	+111 98% 37	+12 98% 85	+4.5 98% 3	-8.2 77% 5	+46 96% 96	+3.6 94% 84	+3.5 95% 3	+1.1 95% 28	-0.3 93% 83	+4.1 95% 18	+0.38 89% 65	+7 96% 94	+0.58 97% 8	+0.82 97% 17	+0.92 95% 22	\$208 58	\$386 33	
NORL508 USA17366506 NORH414	RENNYLEA L508 PV HBR	+174 94% 6	+2.4 90% 57	+7.8 83% 9	-5.7 99% 33	+2.7 99% 27	+46 98% 77	+84 98% 79	+117 98% 60	+88 98% 73	+26 98% 6	+1.4 84% 78	-8.5 97% 4	+56 96% 83	+5.5 96% 65	+0.5 96% 39	-0.6 96% 57	-0.2 94% 79	+5.6 96% 4	+0.54 90% 80	+14 99% 78	+0.64 98% 14	+0.82 98% 17	+0.88 97% 14	\$250 15	\$401 22	
NORP987 NORM763 NORM1184	RENNYLEA P987 PV APR	+244 89% 1	+9.1 77% 4	+8.8 67% 4	-7.9 97% 10	+1.6 98% 12	+49 97% 65	+96 97% 47	+118 95% 57	+125 92% 19	+6 96% 99	+0.1 96% 98	-3.4 66% 83	+69 91% 51	+5.0 90% 71	+4.0 90% 2	+2.5 90% 12	-1.2 84% 99	+8.4 91% 97	+0.92 83% 97	+10 97% 87	+0.86 94% 56	+1.02 94% 63	+1.04 92% 56	\$225 38	\$403 21	
NORQ1077 NORH708 NORG101	RENNYLEA Q1077 PV APR	+155 84% 10	+1.8 85% 62	+10.6 73% 1	-4.2 98% 57	+2.7 98% 27	+50 97% 60	+98 97% 39	+123 97% 48	+105 95% 46	+11 92% 90	+2.2 97% 49	-6.1 65% 26	+78 89% 25	+15.7 88% 1	+0.6 88% 36	-0.2 88% 50	+1.5 84% 5	+5.0 88% 8	+0.63 77% 86	+21 98% 49	+0.68 95% 20	+0.80 95% 14	+0.84 92% 9	\$283 2	\$452 3	
NORQ213 NORK907 NORL110	RENNYLEA Q213 PV APR	+48 89% 73	+8.4 86% 7	+6.8 73% 16	-7.0 98% 17	+1.1 98% 8	+62 98% 12	+117 98% 5	+144 97% 11	+95 96% 63	+21 94% 26	+0.6 97% 94	-11.0 66% 1	+97 92% 3	+8.9 91% 27	+1.0 91% 28	+0.2 91% 43	+0.2 86% 58	+3.2 91% 34	+0.63 83% 86	+27 98% 27	+0.50 97% 4	+0.70 97% 5	+0.90 94% 18	\$335 1	\$523 1	
NORR992 NORN542 NORM1034	RENNYLEA R992 PV APR	+174 87% 6	+3.8 71% 43	+8.0 63% 8	+2.1 95% 99	+1.1 95% 8	+44 94% 86	+83 94% 82	+113 94% 69	+81 92% 81	+25 88% 8	+1.7 92% 68	-6.5 61% 20	+71 89% 44	+12.4 87% 7	+0.4 87% 41	+0.4 88% 39	+0.5 80% 40	+5.9 89% 3	+1.06 81% 99	+22 93% 44	+0.62 90% 12	+0.82 90% 17	+0.84 86% 9	\$262 8	\$408 18	
Breed Average EBVs		+81.	+2.5	+3.2	-4.6	+3.8	+52	+94	+121	+103	+18	+2.3	-5.1	+69	+6.9	+0.1	-0.2	+0.4	+2.6	+0.24	+21	+0.83	+0.96	+1.01	+212	+361	

Angus Australia - MSA Marbling Research Breeding Values

Date: May 1, 2026

Page: 11

Ident	Name																										
Sire Dam	Reg.	MSA MBL RBV	Calv-Ease		Birth		Growth			Maternal			Fert		Carcase					Feed	Temp	Structural		Selection Index			
			Dir	Dtrs	GL	BW	200	400	600	MCW	Milk	SS	DC	CW	EMA	Rib	P8	RBY	IMF	NFI-F	Doc	Claw	Angle	Leg	\$A	\$A-L	
NOR22T1430 NORQ1077 NORQ58	RENNYLEA T1430^{PV} APR	+137 77% 16	+4.0	+9.8	-4.0	+3.7	+57	+103	+144	+102	+23	+2.2	-5.9	+106	+17.6	-1.2	-0.5	+1.3	+5.0	+0.86	+23	+0.48	+0.82	+0.96	\$310	\$480	
NOR22T458 VTMQ1454 NORK723	RENNYLEA T458^{PV} APR	+239 77% 1	+4.9	+8.1	-4.8	+2.7	+52	+94	+124	+103	+27	+1.8	-5.7	+65	+18.5	-2.3	-1.8	+0.7	+7.4	+0.14	+30	+0.92	+1.10	+0.98	\$284	\$451	
VKR22T58 USA19169335 VKRR38	RIGA TAVERN T58^{PV} HBR	+109 74% 30	+4.8	+3.6	-4.0	+2.0	+58	+109	+134	+131	+14	+4.1	-3.6	+72	+7.5	-1.2	-0.9	+0.3	+3.1	+0.08	+34	+0.88	+0.86	+1.00	\$214	\$393	
NZE14572019 HKFM103 NZE14572117009	RISSINGTON SOVEREIGN Q485 HBR	+200 90% 2	+10.8	+9.4	-6.9	+0.7	+63	+117	+161	+131	+25	+2.4	-5.7	+94	+7.3	-1.9	-5.5	+0.2	+7.0	+0.09	-5	+0.94	+0.98	+1.26	\$284	\$479	
BGB22T330 NZE145720200321 NZE145721190379	RISSINGTON TITAN T330^{PV} HBR	+219 70% 1	+5.0	+4.5	-2.7	+3.2	+52	+90	+120	+116	+22	+1.8	-4.6	+75	+11.2	-3.8	-5.4	+1.5	+6.1	+0.33	+4	+0.84	+0.90	+0.96	\$242	\$403	
FCD21S52 USA18837398 NZE21159116122	SEVEN HILLS STERLING S52^{PV} HBR	+134 75% 17	+6.8	+5.1	-3.2	+2.6	+57	+104	+131	+115	+16	+1.7	-3.2	+65	+10.3	-1.8	-2.2	+1.0	+3.6	-0.06	+30	+0.88	+1.04	+1.00	\$238	\$403	
FCD22T53 USA19123898 NZE21159120016	SEVEN HILLS T53^{PV} HBR	+106 73% 32	+9.3	+6.6	-4.9	+1.1	+57	+104	+134	+96	+22	+3.3	-5.6	+84	+12.9	-1.2	-1.0	+0.6	+3.4	+0.14	+25	+0.86	+0.90	+0.90	\$267	\$433	
APB22T385 NORQ213 APBN158	SHACORRAHDALU TANK T385 APR	+70 75% 57	+10.2	+6.2	-10.9	+0.3	+58	+114	+139	+91	+21	+2.8	-11.5	+82	+12.6	+1.2	-0.4	+0.9	+2.8	+0.38	+37	+0.62	+0.86	+1.06	\$335	\$524	
USA19189229 USA17585576 USA18171316	STERLING CONFIDENCE PLUS HBR	+39 81% 78	+5.2	+4.0	-5.7	+1.4	+57	+103	+125	+80	+23	+1.0	-5.2	+72	+11.3	+1.9	+1.9	+0.3	+1.8	+0.13	+16	+1.00	+0.88	+0.92	\$260	\$408	
FAM21S329 USA19057457 NZE21043118P69	STOKMAN SOLUTION S329^{PV} HBR	+105 78% 32	+6.9	+4.1	-10.5	-1.2	+44	+91	+108	+53	+21	+3.4	-8.2	+64	+10.4	+2.7	+2.1	+0.6	+2.5	+0.89	+2	+0.94	+1.12	+0.96	\$269	\$409	
FAM21S346 USA18397542 NZE21043119Q31	STOKMAN STELLAR S346^{PV} HBR	+115 75% 27	+4.8	+8.9	-7.3	+2.0	+52	+108	+134	+103	+15	+3.0	-7.7	+68	+5.9	+4.6	+3.4	-0.1	+2.8	+0.57	+20	+0.54	+0.88	+0.96	\$266	\$448	
SYAN340 SYAL178 SGMK250	STONE POINT NOLTE N340^{SV} HBR	+92 86% 41	-2.3	-6.9	-6.3	+6.0	+72	+129	+165	+152	+17	+3.5	-3.0	+104	+5.8	-3.1	-5.3	+0.6	+3.0	-0.18	+6	+0.92	+0.90	+1.12	\$219	\$389	
SYAP147 USA17936442 SWAH233	STONE POINT PERRY P147^{PV} HBR	+132 88% 18	+4.6	+2.5	-4.9	+4.6	+56	+103	+132	+107	+20	+1.5	-7.1	+97	+9.8	-1.4	-0.5	+0.4	+3.9	-0.25	+5	+0.82	+0.74	+0.66	\$267	\$435	
Breed Average EBVs		+81.	+2.5	+3.2	-4.6	+3.8	+52	+94	+121	+103	+18	+2.3	-5.1	+69	+6.9	+0.1	-0.2	+0.4	+2.6	+0.24	+21	+0.83	+0.96	+1.01	+212	+361	

Angus Australia - MSA Marbling Research Breeding Values

Date: May 1, 2026

Page: 12

Ident	Name																										
Sire Dam	Reg.	MSA MBL RBV	Calv-Ease		Birth		Growth			Maternal			Fert		Carcase					Feed	Temp	Structural		Selection Index			
			Dir	Dtrs	GL	BW	200	400	600	MCW	Milk	SS	DC	CW	EMA	Rib	P8	RBY	IMF	NFI-F	Doc	Claw	Angle	Leg	\$A	\$A-L	
NZE19507018 NORL508 NZE19507113J320	STORTH OAKS FULLY LOADED HBR	+120 89% 24	+8.5	+5.3	-11.5	+1.1	+44	+86	+132	+128	+22	+3.2	-8.4	+65	+2.9	+0.6	+0.3	-0.6	+4.1	+0.79	+30	+0.60	+0.78	+1.02	\$198	\$383	
FAF21S19 USA18962277 NZE19507115L244	STORTH OAKS ZEPHYR S19 PV HBR	+89 75% 44	+6.6	+7.7	-7.0	+2.9	+67	+117	+155	+114	+26	+3.4	-6.7	+81	+2.4	-0.1	+1.3	-0.8	+3.6	+0.63	+7	+0.74	+0.90	+0.94	\$274	\$460	
USA17236055 USA15354674 USA16214508	SYDGEN BLACK PEARL 2006 PV HBR	+121 96% 24	+1.7	+7.0	-7.0	+3.2	+51	+85	+122	+89	+21	+1.5	-3.8	+75	+8.0	+0.4	-0.9	+0.5	+3.1	+0.38	+15	+1.04	+1.20	+1.14	\$213	\$345	
NPGG121 NMMD1 NPGC14	TALOOBY GALAXY G121 SV HBR	+33 88% 82	-1.2	-1.4	-2.4	+5.6	+38	+64	+93	+88	+13	+0.8	-5.1	+65	-0.8	+1.8	+2.2	+0.1	+1.5	+0.67	+10	+0.80	+1.04	+1.08	\$132	\$243	
VTMK52 USA16295688 VTMH423	TE MANIA KALIBROOK K52 PV HBR	+131 87% 18	+7.4	+5.7	-3.4	+1.4	+51	+101	+127	+102	+27	+1.5	-6.0	+73	+4.2	+1.0	+1.6	-0.6	+5.5	+1.38	+6	+1.18	+1.12	+1.18	\$246	\$414	
VTMK138 USA16295688 VTMH17	TE MANIA KIRBY K138 PV HBR	+258 97% 1	+0.1	+7.6	-1.4	+4.9	+51	+87	+114	+97	+18	+2.4	-8.1	+65	+6.1	+1.8	+3.0	-1.9	+8.6	+0.78	+15	+0.78	+0.76	+0.92	\$251	\$408	
VTMN424 VTMJ89 VTMJ214	TE MANIA NEBO N424 PV HBR	+170 96% 6	+8.7	-0.7	-6.7	+3.8	+53	+100	+131	+97	+28	+4.2	-4.7	+55	+6.4	-0.9	-4.1	+0.3	+4.0	-0.07	+47	+0.92	+0.86	+0.90	\$214	\$360	
VTMN1387 VTMK138 VTML452	TE MANIA NEON N1387 SV HBR	+314 95% 1	+0.8	+3.8	-6.2	+3.5	+45	+82	+103	+83	+20	+1.0	-6.5	+38	+3.3	-0.4	-0.8	-2.1	+10.	-0.25	+25	+0.68	+0.80	+0.88	\$221	\$356	
VTMP888 VTMK226 VTMH423	TE MANIA PESO P888 PV HBR	+40 94% 78	+6.6	+5.8	-5.2	+2.1	+56	+112	+143	+117	+25	+2.2	-6.7	+91	+6.7	-0.5	+0.9	+0.6	+1.5	-0.13	+24	+0.86	+1.08	+0.98	\$253	\$436	
VTMQ854 USA18229488 VTML1244	TE MANIA QUEBEC Q854 SV HBR	+50 94% 71	+7.9	+2.0	-2.3	+1.6	+55	+96	+124	+89	+26	+1.4	-5.8	+71	+3.9	+1.8	-0.5	-0.4	+3.4	+0.70	+34	+0.64	+0.78	+0.78	\$228	\$375	
VTMR970 VTMP149 VTMP287	TE MANIA RESOLUTION R970 PV HBR	+60 86% 65	+2.8	+4.9	-5.4	+3.7	+57	+107	+136	+110	+22	+1.6	-5.0	+83	+9.6	+0.5	-0.4	+0.7	+1.9	-0.26	+25	+0.86	+0.90	+1.10	\$241	\$403	
VTMR795 NORH708 VTML1374	TE MANIA ROCCO R795 SV APR	+191 90% 3	+1.7	+3.0	-3.8	+1.4	+40	+90	+120	+118	+18	+1.6	-4.8	+47	+5.7	+0.5	-2.3	+0.0	+5.8	+0.20	+35	+0.68	+0.80	+1.12	\$187	\$345	
VTM22T868 USA18170041 VTMQ660	TE MANIA TONIC T868 (AI) PV HBR	+141 73% 15	+7.3	+1.9	-6.0	+3.5	+54	+98	+132	+99	+18	+3.0	-6.7	+70	+2.8	-1.2	-1.8	-1.1	+4.9	+0.18	+49	+0.78	+0.98	+0.92	\$224	\$383	
Breed Average EBVs		+81.	+2.5	+3.2	-4.6	+3.8	+52	+94	+121	+103	+18	+2.3	-5.1	+69	+6.9	+0.1	-0.2	+0.4	+2.6	+0.24	+21	+0.83	+0.96	+1.01	+212	+361	

Angus Australia - MSA Marbling Research Breeding Values

Date: May 1, 2026

Page: 13

Ident	Name																										
Sire Dam	Reg.	MSA MBL RBV	Calv-Ease		Birth		Growth			Maternal			Fert		Carcase					Feed	Temp	Structural		Selection Index			
			Dir	Dtrs	GL	BW	200	400	600	MCW	Milk	SS	DC	CW	EMA	Rib	P8	RBY	IMF	NFI-F	Doc	Claw	Angle	Leg	\$A	\$A-L	
DXTR725 USA18962396 DXTM647	TEXAS ICEMAN R725 PV HBR	+57 90% 67	+1.1 87% 67	+2.0 73% 68	-3.6 99% 66	+3.7 98% 48	+53 98% 46	+99 98% 36	+124 97% 44	+105 93% 47	+16 90% 64	+2.2 97% 49	-3.4 61% 83	+77 92% 28	+12.1 91% 7	+1.5 90% 20	+5.3 91% 2	+0.2 84% 58	+2.1 92% 60	+0.52 84% 79	+38 96% 5	+1.26 92% 99	+0.84 92% 21	+0.62 90% 1	\$223 40	\$373 44	
DXTM100 USA15848590 DXTZ183	TEXAS MT KAPUTAR M100 PV HBR	+109 88% 30	+5.1 83% 31	+5.9 72% 25	-10.0 97% 2	+4.7 96% 69	+60 95% 18	+105 95% 23	+143 94% 12	+142 91% 7	+14 92% 75	+3.5 93% 13	-3.5 64% 81	+78 90% 25	+4.7 89% 74	-2.5 88% 93	-3.5 89% 92	+0.1 83% 64	+2.3 90% 55	+0.26 81% 52	+32 93% 14	+1.00 85% 81	+1.18 85% 90	+0.98 81% 38	\$186 79	\$367 49	
TVA22T32 USA17960722 TGUN12	TOLIVAR TORIN T32 PV HBR	+103 74% 34	+3.5 78% 46	+4.9 69% 36	-7.4 91% 13	+3.3 91% 39	+64 90% 8	+104 88% 24	+135 88% 23	+116 84% 29	+17 79% 52	+1.7 81% 68	-5.0 56% 49	+76 79% 31	+6.7 74% 51	-3.0 74% 96	-2.7 75% 86	+1.0 67% 16	+2.9 77% 41	+0.00 69% 25	+20 82% 53	+0.66 70% 17	+0.84 70% 21	+0.94 68% 26	\$253 13	\$418 13	
DBLL292 USA16295688 VSNF04	TOPBOS LEADING EDGE L292 PV HBR	+55 91% 67	+2.3 89% 57	+7.3 77% 13	-5.8 98% 31	+6.6 98% 94	+72 97% 1	+124 97% 2	+162 97% 2	+147 96% 5	+23 96% 17	+1.3 97% 81	-3.9 71% 74	+79 94% 23	+4.2 92% 79	-2.1 91% 89	-4.8 93% 97	-0.1 89% 74	+1.7 93% 70	+0.04 87% 29	+17 97% 65	+0.96 92% 75	+0.84 92% 21	+0.78 89% 4	\$219 45	\$404 20	
NZE17691009 NZE17691003Y167 NZE17691195Q263	TURIHUA CRUMP E5 SV HBR	+26 94% 86	-2.1 94% 85	-0.6 88% 85	-5.9 97% 30	+3.0 98% 32	+28 98% 99	+58 98% 99	+82 98% 99	+91 97% 68	+14 98% 79	+0.9 98% 90	-8.7 90% 3	+16 96% 99	-0.9 95% 95	+5.1 95% 1	+3.7 95% 5	-0.4 94% 86	+1.5 95% 75	+0.42 88% 70	+28 91% 23	+0.62 84% 12	+1.22 84% 94	+1.20 79% 92	\$122 99	\$247 98	
NXTJ122 NORC574 NXTC89	TWYNAM J122 PV APR	+88 86% 44	+4.5 78% 37	+3.6 69% 51	-4.7 93% 49	+4.8 93% 71	+44 92% 84	+79 91% 89	+113 91% 69	+88 88% 72	+17 87% 55	+1.6 85% 71	-6.8 64% 16	+71 87% 45	+6.6 86% 52	+3.2 86% 4	-0.6 87% 57	+0.6 80% 34	+3.3 88% 32	+0.33 83% 60	-3 86% 99	+0.96 85% 75	+0.78 85% 12	+0.98 81% 38	\$220 44	\$362 53	
NXTL096 NXTH111 NXTJ078	TWYNAM L096 SV APR	+40 87% 77	+9.0 76% 5	+10.6 62% 1	-8.6 94% 6	+2.1 94% 17	+57 92% 29	+110 91% 13	+150 91% 6	+118 87% 27	+27 83% 4	+3.1 86% 20	-10.3 54% 1	+104 88% 1	+3.1 86% 87	+0.5 83% 39	+1.5 87% 23	-0.4 80% 86	+2.5 88% 50	-0.31 87% 7	+0 83% 99	+0.62 74% 12	+0.84 75% 21	+0.96 70% 32	\$275 4	\$477 1	
NZE18954020 NZE21159016327 NZE18954118P105	WAITANGI R257 PV HBR	+153 89% 11	+0.9 70% 69	+1.7 61% 70	-6.1 96% 27	+3.8 97% 50	+53 96% 46	+93 95% 56	+120 95% 54	+99 93% 56	+26 86% 7	+3.2 91% 18	-8.3 59% 4	+70 90% 47	+10.1 89% 18	+0.1 89% 48	-0.6 89% 57	+0.3 81% 52	+4.4 91% 14	+0.72 82% 91	+17 92% 67	+0.80 90% 43	+0.74 90% 7	+0.74 86% 2	\$255 12	\$410 17	
LEJ21S102 NJWN498 ASHL24	WALLAWONG SAFE & SOUND HBR	+134 85% 17	+6.7 74% 17	+3.3 63% 54	-6.4 92% 23	+5.0 91% 75	+49 90% 64	+87 89% 73	+115 89% 64	+99 85% 56	+17 80% 53	+2.0 81% 57	-0.2 55% 99	+65 85% 63	+7.7 84% 39	-1.7 85% 84	-2.3 85% 82	+0.9 76% 19	+3.8 87% 23	+0.34 77% 61	+12 85% 84	+0.52 84% 5	+0.76 84% 9	+1.14 80% 83	\$181 82	\$312 84	
QKBP29 SMPG357 QKBM01	WARRAWEE PATROL P29 PV HBR	+56 85% 67	+6.7 81% 17	+9.8 73% 2	-11.9 96% 1	+3.0 94% 32	+55 93% 36	+104 92% 24	+139 89% 17	+134 89% 11	+17 85% 57	+2.4 88% 42	-10.8 66% 1	+102 87% 2	+10.2 86% 17	+3.8 86% 2	+2.6 86% 12	+0.3 80% 52	+1.9 87% 65	+0.61 79% 85	+28 88% 24	+0.78 78% 38	+1.20 78% 92	+1.00 74% 44	\$275 4	\$488 1	
NWPE111 USA14474596 NWPC36	WATTLETOP SITZ 458N E111 SV HBR	+114 91% 27	+4.4 90% 37	+6.4 82% 20	-3.7 97% 65	+2.8 98% 28	+51 97% 58	+91 97% 61	+124 97% 44	+94 95% 64	+25 96% 9	+1.9 95% 61	-1.0 75% 99	+83 94% 15	+5.3 92% 68	-4.2 93% 99	-3.3 93% 91	+0.9 89% 19	+2.7 93% 46	-0.51 86% 2	+25 95% 32	+0.98 88% 78	+0.96 88% 48	+1.10 84% 73	\$185 79	\$316 83	
CWDM5 SMPG357 CWDJ15	WEATHERLY MOXY M5 SV HBR	+59 88% 65	+3.8 77% 43	+6.3 70% 21	-4.6 93% 50	+3.9 96% 52	+55 95% 37	+100 95% 35	+133 95% 27	+114 94% 33	+26 92% 5	+2.5 89% 38	-8.4 68% 4	+83 91% 16	+6.4 89% 55	+2.9 89% 6	+0.9 90% 31	+0.1 83% 64	+2.8 90% 43	+0.23 82% 49	+18 92% 63	+0.96 93% 75	+1.08 93% 76	+1.00 87% 44	\$252 14	\$429 8	
JVC21S2 USA18636106 JVCQ83	WRIGLEY SUPREME S2 PV HBR	+131 78% 18	+9.4 72% 3	+8.5 64% 6	-1.3 97% 91	+2.5 96% 23	+57 95% 26	+106 95% 20	+131 94% 29	+89 88% 72	+24 80% 11	+3.8 92% 8	-9.5 56% 1	+84 82% 15	+7.6 82% 40	-2.1 82% 89	-1.0 82% 63	+0.8 76% 24	+4.3 82% 15	+0.65 71% 87	+5 92% 96	+0.92 89% 68	+0.90 90% 33	+1.00 86% 44	\$313 1	\$491 1	
Breed Average EBVs		+81.	+2.5	+3.2	-4.6	+3.8	+52	+94	+121	+103	+18	+2.3	-5.1	+69	+6.9	+0.1	-0.2	+0.4	+2.6	+0.24	+21	+0.83	+0.96	+1.01	+212	+361	

For further information, please contact staff at Angus Australia:
P: 02 6773 4600 | E office@angusaustralia.com.au

www.angusaustralia.com.au



ANGUS
AUSTRALIA